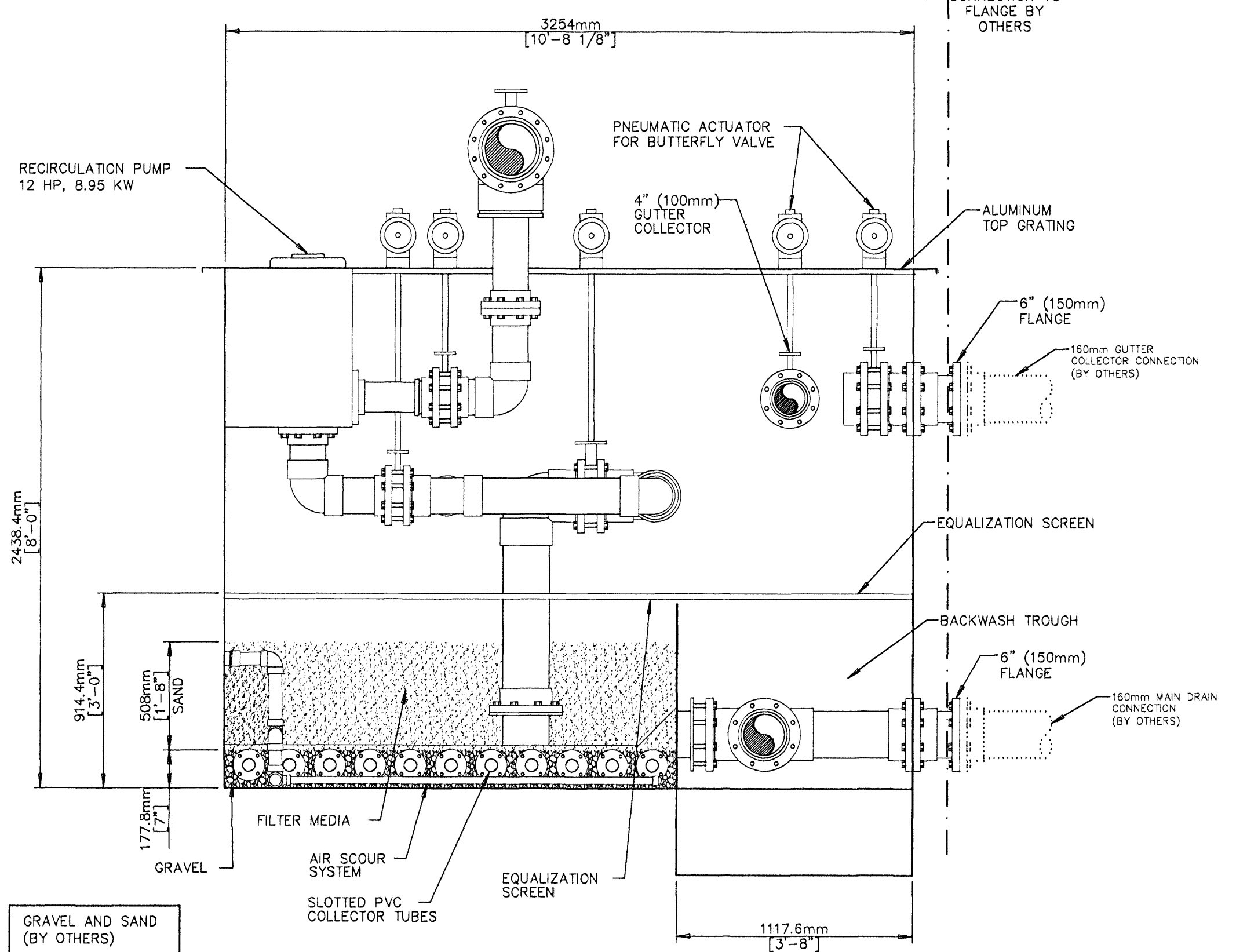
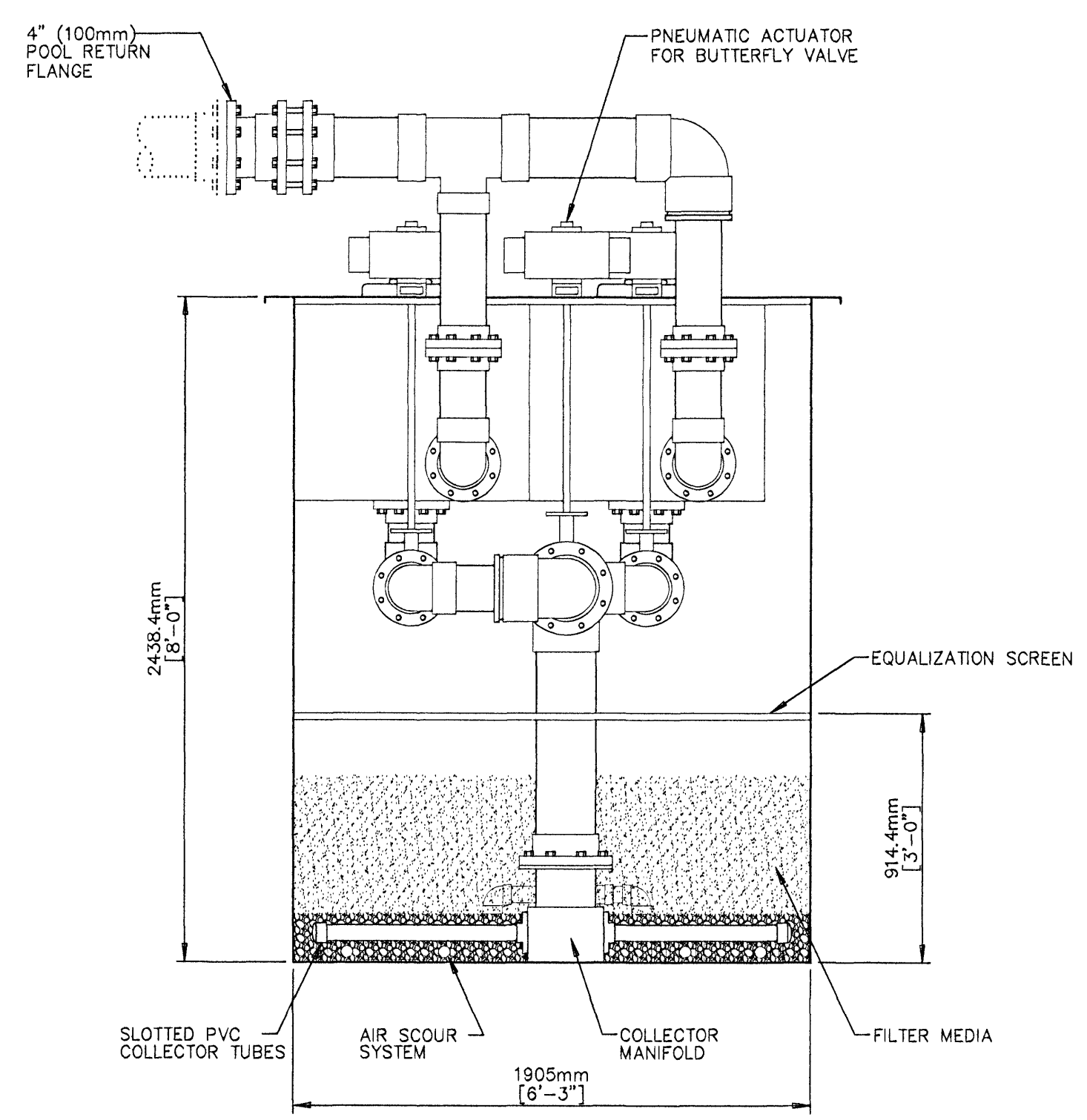


A
8.3a
FILTER PLAN VIEW



B
8.3a
FILTER SECTION A-A



C
8.3a
FILTER SECTION B-B

NATARE VACUUM SAND
FILTRATION SYSTEM
MODEL NUMBER: 22900.44

FILTER AREA (SQ. FT.)	FILTRATION RATE (GPM/SQ. FT.)	BACKWASH FLOW RATE (GPM/SQ. FT.)	CUBIC FEET GRAVEL	CUBIC FEET SAND
44	880	660	26	74
			GRAVEL AND SAND (BY OTHERS)	

EQUIPMENT SCHEDULE		
ITEM	QTY.	DESCRIPTION
1	2	RECIRCULATION PUMP, 12 HP, 8.95 KW
2	26 CU.FT.	GRAVEL
3	74 CU.FT.	SAND
4		
5		
6		
7		
8		
9		
10		

VALVE SEQUENCE												
OPERATION	1	2	3	4	5	6	7	8	9	10	11	12
FILTRATION	○	○	○	○	○	○	○	○	○	○	○	○
BACKWASH	×	×	×	×	×	×	×	×	×	×	×	×
DRAIN TO WASTE	○	○	○	○	○	○	○	○	○	○	○	○

○ - OPEN × - CLOSED ◻ - CAN BE EITHER OPEN OR CLOSED

Sundmidstod

Iceland

Samþykkt þann
07 MAI 2008
Byggingarfulltrúinn í Hafnarfirði
F.h. Hröfur S. Gunnlaugsson

Dr. Einar
Kt. 110457-2789
Strendingur ehf.
Fludvangur 13, 201 Hafnarþorbúur
Sími 565 6840 • strendingur@strendingur.is
www.strendingur.is

UPDATED FILTER FITTINGS 9/21/07

NO.	DESCRIPTION	DATE
REVISIONS		

NATARE
CORPORATION
5905 W. 74th Street
Indianapolis, IN 46278-1788
(317)290-8828
Fax: (317)290-9998

These drawings and the ideas, concepts, illustrations, and written information represented hereby are the property of Natare Corporation and shall not be distributed, copied, reproduced, or utilized in any manner except upon the expressed written consent of Natare Corporation. The recipient hereof acknowledges the confidential and proprietary nature of these drawings and acknowledges Natare's proprietary interest therein and agrees not to use these drawings or the ideas and concepts depicted herein except for the fabrication of the articles depicted herein for and on the behalf of Natare Corporation.

© 2007 NATARE CORPORATION
PAGE TITLE:
VACUUM SAND FILTER #4

DATE: 10/5/07	
FILE: Vacuum Sand Filters.dwg	
LAYOUT: 44 - Filter #4 Plan	
DRAWN BY: SAL	
CHECKED BY: MTW	
PROJECT NO.:	SHEET NO.:
	8.3a

- Do not scale drawings. Refer to or request specific dimensions.
- Specific dimensions are assumed to be accurate. However, do not use for construction unless verified and certified.
- Dimensions and details are subject to change without notice unless drawings are certified.
- For clarity or reference, certain equipment or areas of construction may be shown. Do not assume all items or work illustrated on these drawings to be furnished by Natare Corporation. Refer to equipment schedule or scope of work for specific details.
- When related work or equipment is shown, such illustration is for information or clarity only. Always refer to appropriate documents for specific details or instructions.