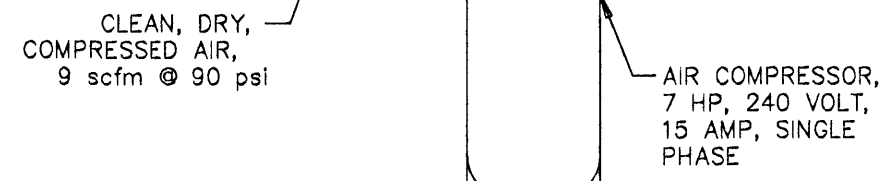
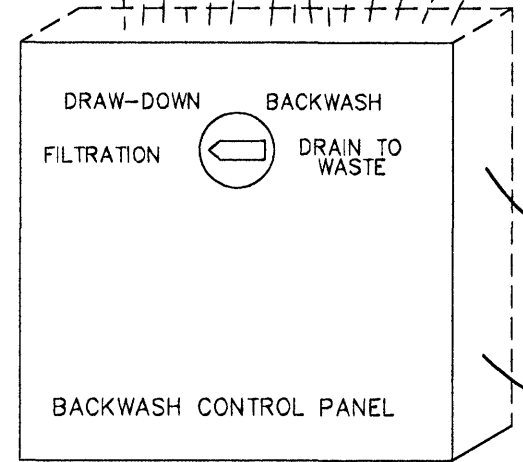


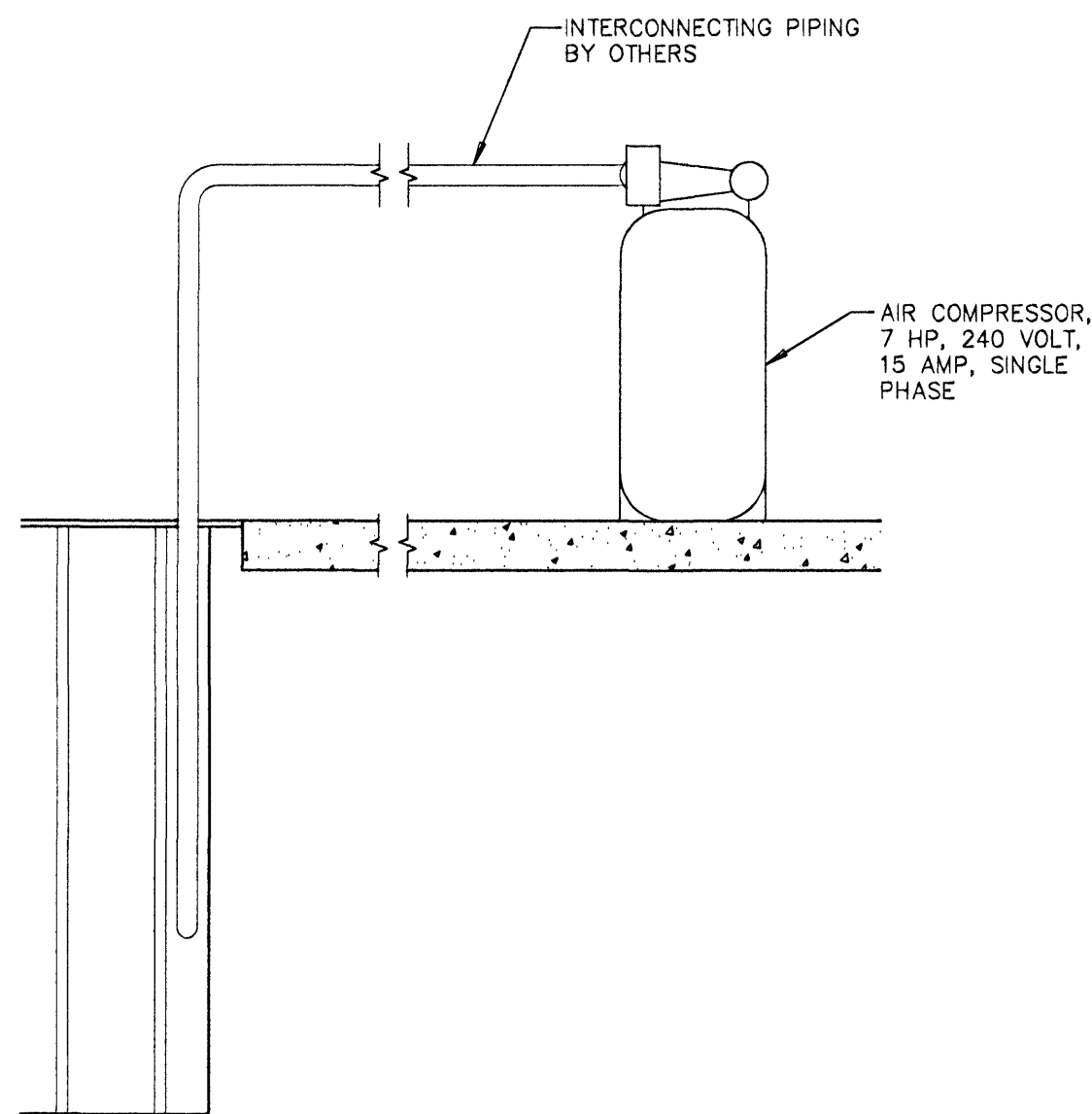
NOTE:
FILTER VALVES ARE PNEUMATICALLY OPERATED PVC
WAFER BUTTERFLY VALVES W/ STAINLESS STEEL
EXTENSION FOR ABOVE WATER VALVE MOUNTING.



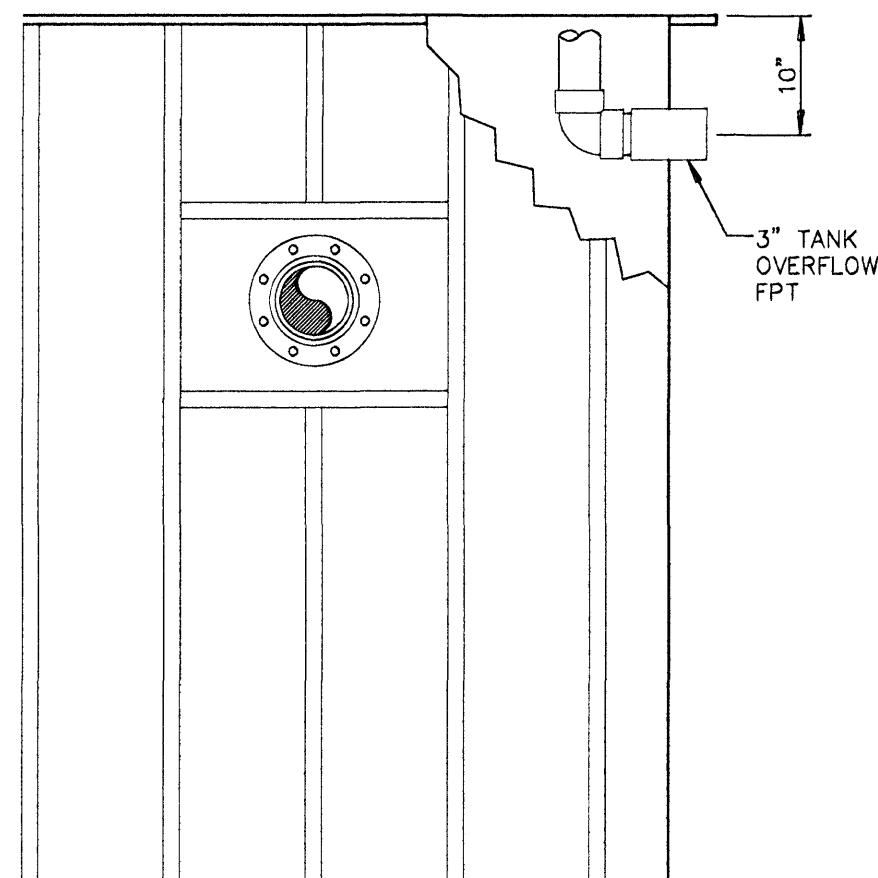
A
8.2c
FILTER #3 VALVE
OPERATION DETAIL

GENERAL NOTES:

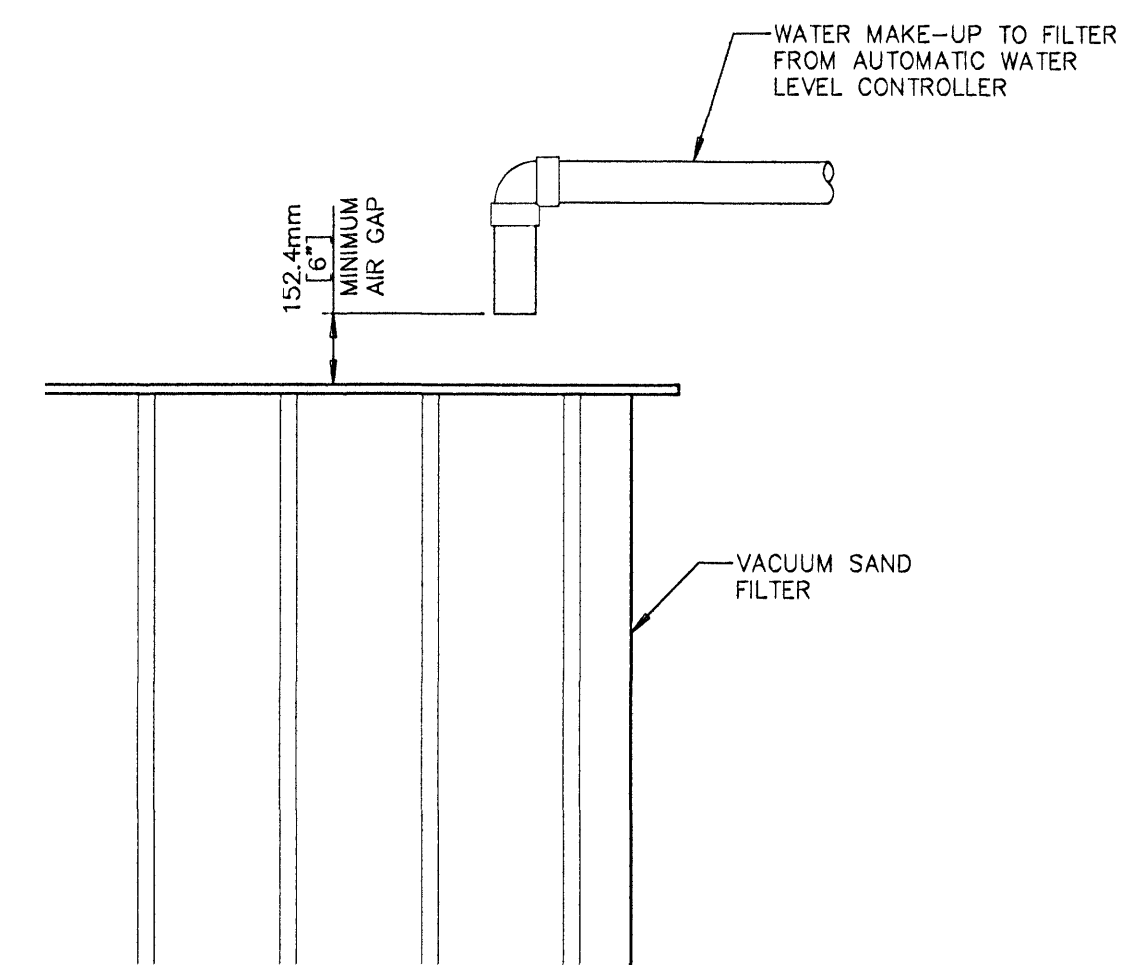
1. FILTER TANK TO BE CONSTRUCTED OF 12 ga. T-304 LOW CARBON STAINLESS STEEL. EXTERNAL STRUCTURAL SUPPORTS TO BE CONSTRUCTED OF A-36 CARBON STEEL. THE ENTIRE EXTERNAL SURFACE OF THE FILTER IS TO BE COATED WITH WATER BASED EPOXY.
2. TOP GRATING TO BE ALUMINUM GRATING. EQUALIZATION SCREEN TO BE STAINLESS STEEL.
3. ALL INTERNAL VALVES TO BE PVC BODIED WITH STAINLESS STEEL SHAFTS AND PVC DISKS. EXTENSION HANDLES TO BE PROVIDED AS REQUIRED.
4. ALL STUDS, NUTS, AND BOLTS USED TO ASSEMBLE INTERNAL PIPING TO BE STAINLESS STEEL.
5. ALL INTERNAL FLANGES SHALL BE SOCKET OR SPIGOT SCH. 80 PVC. EXTERIOR FLANGES TO BE SOCKET SCH. 80 PVC.
6. THE SAND BED SHALL CONSIST OF UNIFORMLY GRADED SILICA SAND, CONTAINING NO LIMESTONE OR CLAY WITH AN EFFECTIVE SIZE OF 0.45mm TO 0.55mm AND A UNIFORMITY COEFFICIENT OF 1.4. THE SUPPORT MEDIA SHALL BE UNIFORMLY GRADED 1/8 - 1/4 WATER ROUNDED SILICA GRAVEL CONTAINING NO LIMESTONE OR CLAY.



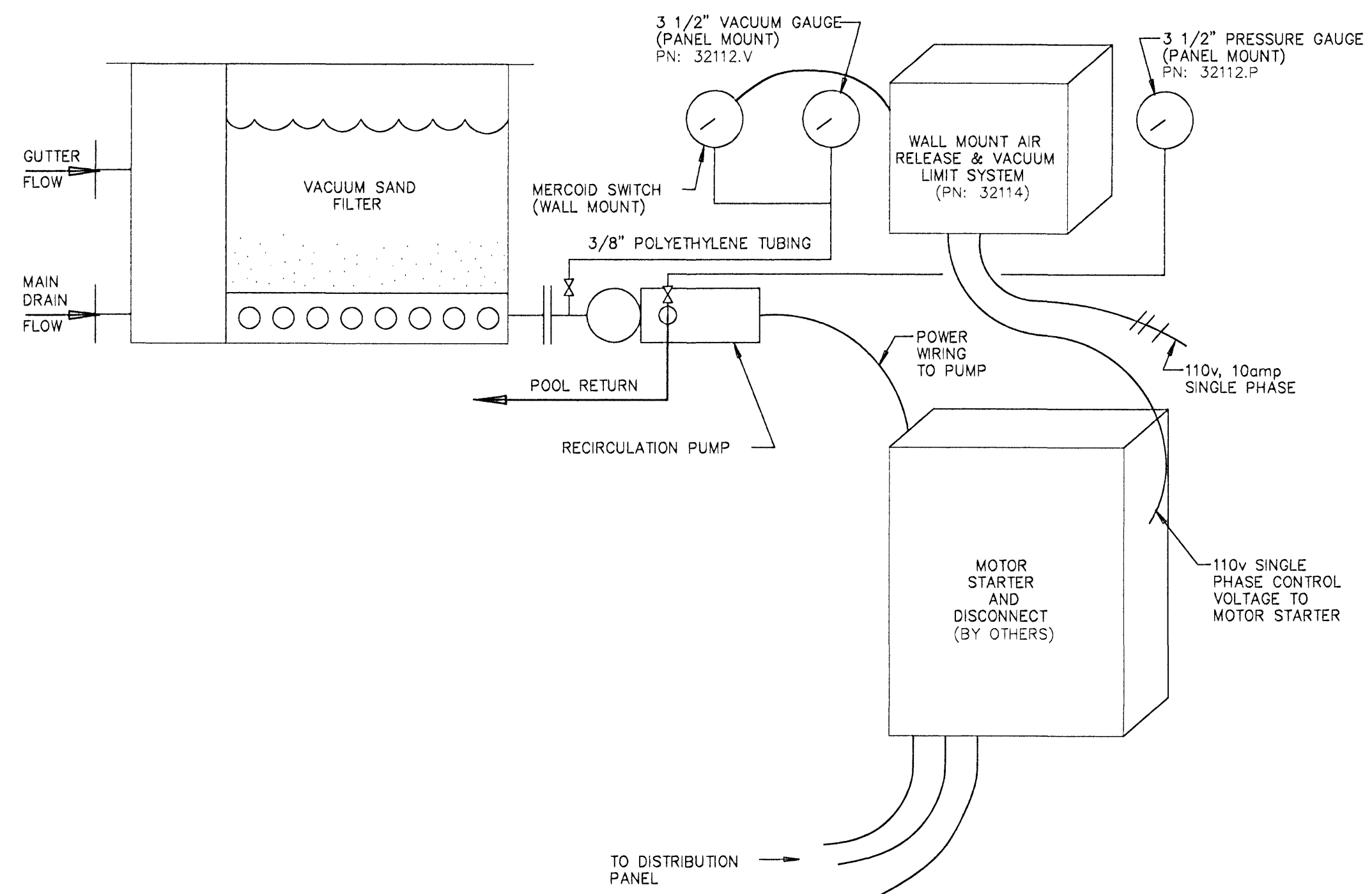
C
8.2c
AIR SCOUR DETAIL



D
8.2c
TANK OVERFLOW



E
8.2c
WATER MAKE-UP TO FILTER



B
8.2c
VACUUM FILTRATION BACKWASH CONTROL/
AUTOMATIC AIR RELEASE SCHEMATIC

Sundmidstod

Iceland

Samþykkt þann
07 MAI 2008
Byggingarfulltrúinn í Hafnarfirði
F.h. Hrölfur S. Gunnlaugsson

Dr. Einar
Kt. 110457-2789

Strendingur ehf.
VERKFRÖÐUN
Flakgröðu 13-15 • 220 Hafnarfirður
Sími 565 5640 • strendingur@strendingur.is
www.strendingur.is

NO.	DESCRIPTION	DATE
REVISIONS		



5905 W. 74th Street
Indianapolis, In 46278-1788
(317)290-8828
Fax:(317)290-9998

These drawings and the ideas, concepts, illustrations, and written information registered hereby are the property of Natore Corporation and shall not be distributed, copied, reproduced, or utilized in any manner except upon the expressed written consent of Natore Corporation. The recipient hereby acknowledges the confidential and proprietary nature of these drawings and acknowledges Natore's proprietary interest therein and agrees not to use these drawings or the ideas and concepts depicted herein except for the fabrication of the articles depicted herein for and on the behalf of Natore Corporation.

© 2007 NATARE CORPORATION

PAGE TITLE:
**VACUUM SAND
FILTER DETAILS**

DATE: 10/5/07
FILE: Vacuum Sand Filters.dwg
LAYOUT: VSF #3 Details
DRAWN BY: SAL
CHECKED BY: MTW
PROJECT NO.: SHEET NO.:

8.2c

1. Do not scale drawings. Refer to or request specific dimensions.
2. Specific dimensions are assumed to be accurate. However, do not use for construction unless verified and certified.
3. Dimensions and details are subject to change without notice unless drawings are certified.
4. For clarity or reference, certain equipment or areas of construction may be shown. Do not assume all items or work illustrated on these drawings to be furnished by Natore Corporation. Refer to equipment schedule or scope of work for specific details.
5. When related work or equipment is shown, such illustration is for information or clarity only. Always refer to appropriate documents for specific details or instructions.