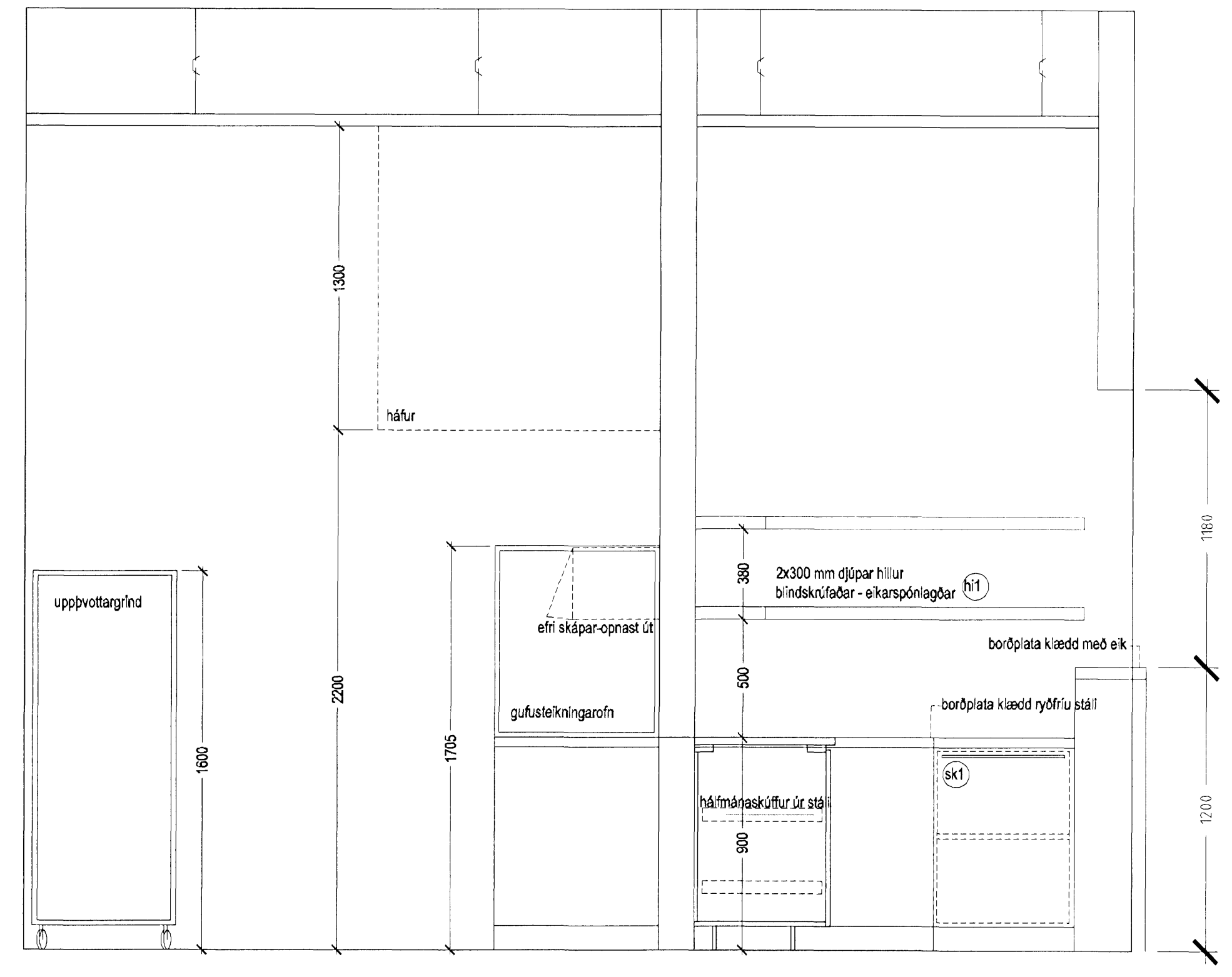
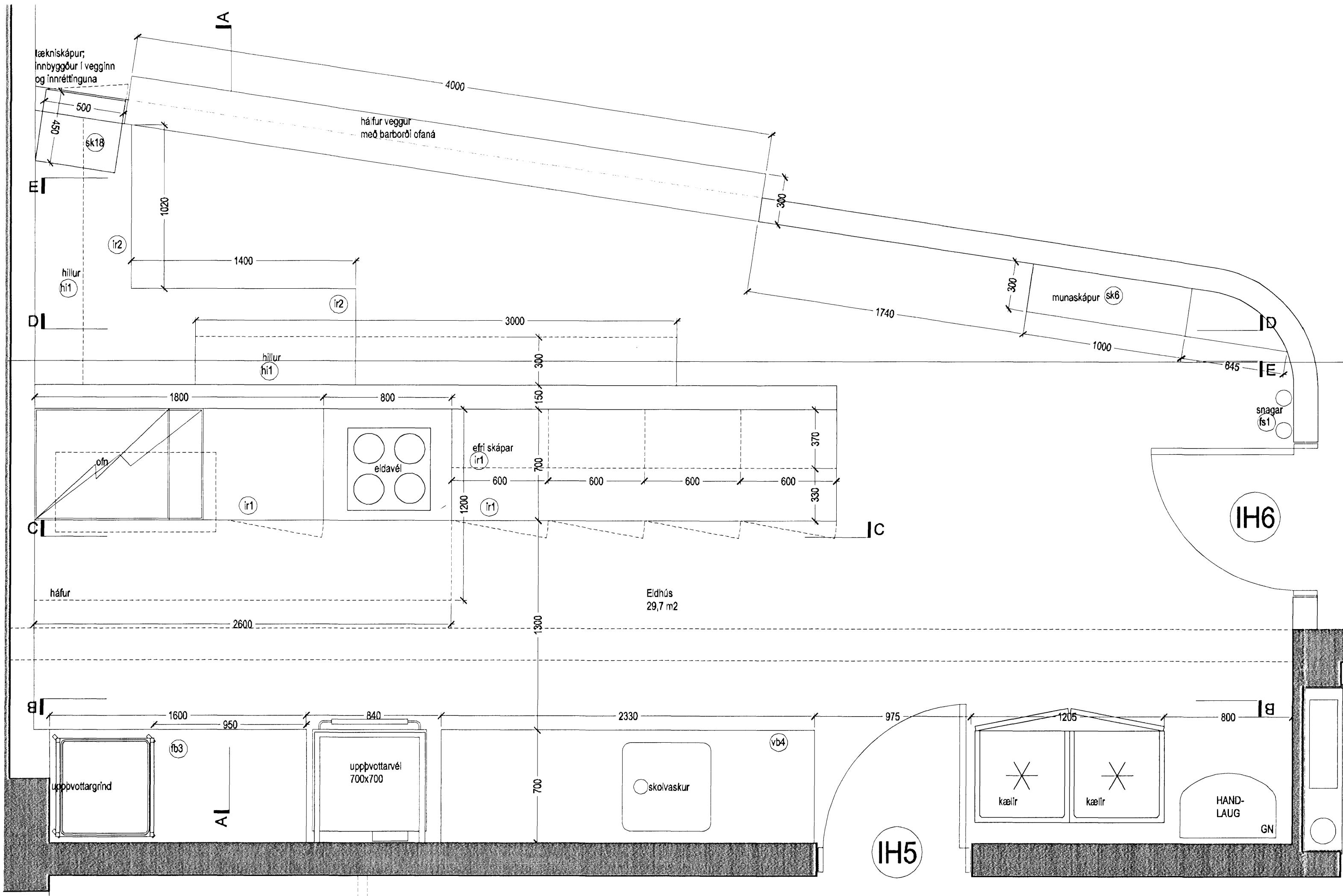
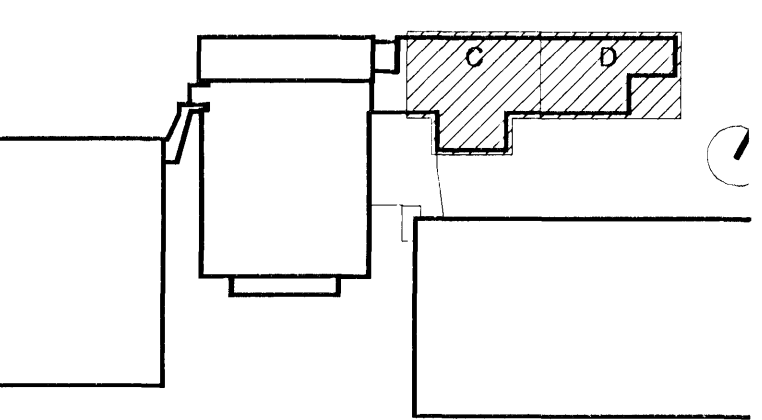


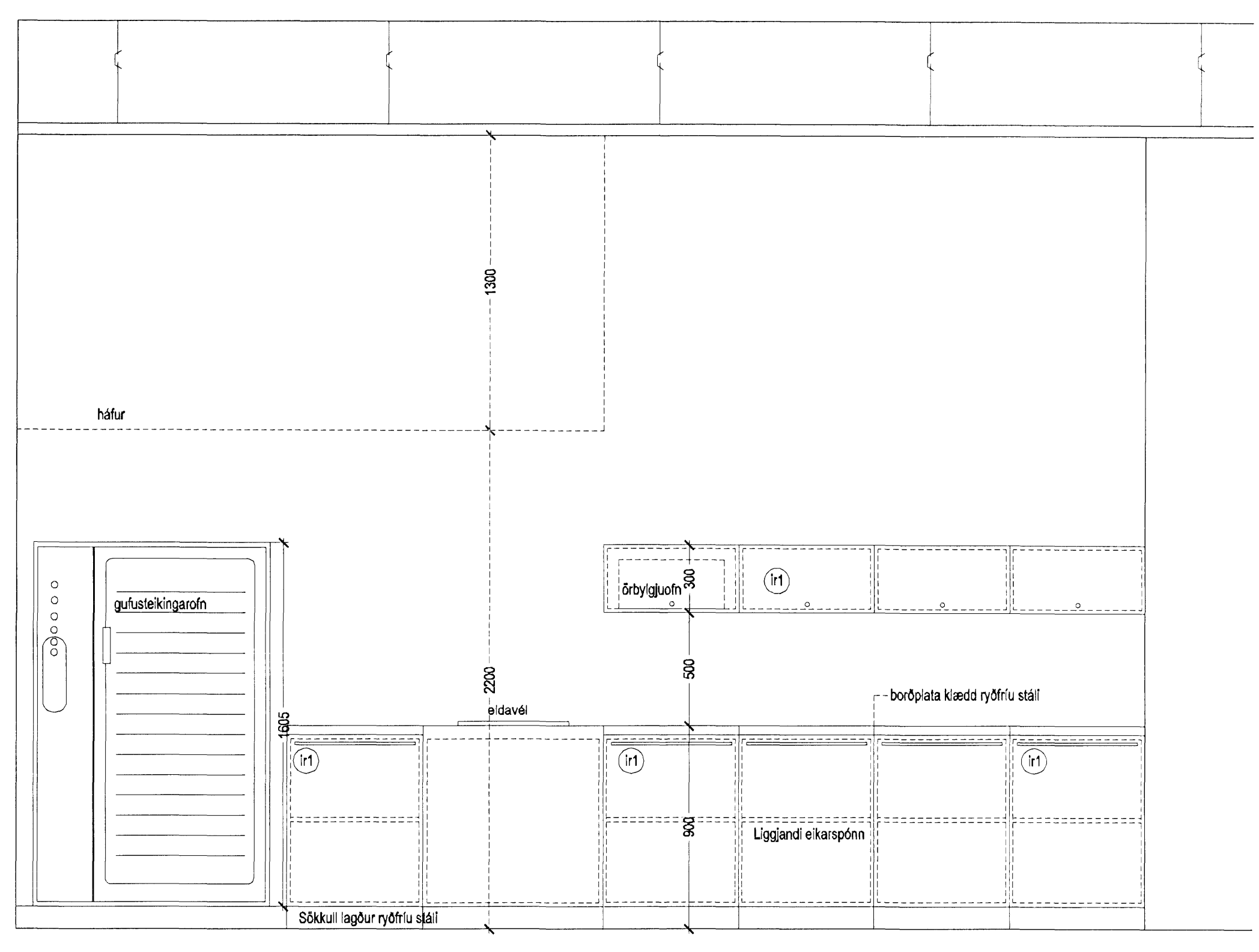
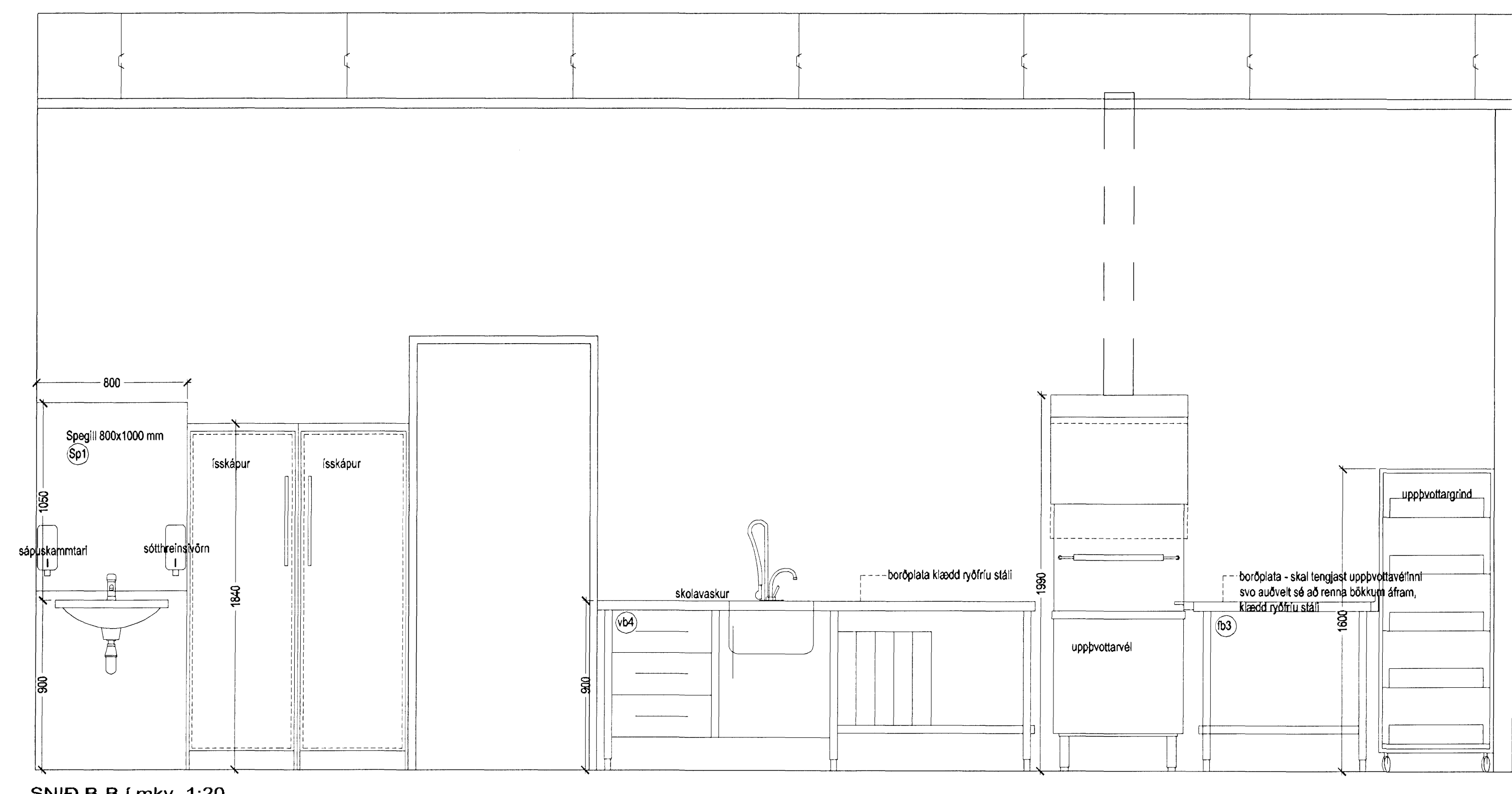
Arkitektúr
 1.8. FEB 2008
 VRS



Upprunalegur höfundur: ASK



Lykilmýnd mkv: 1:2000



Útg. Dags.	Teikn.	Breyting	Samþ. af verkkaupa	Dags.

Fasteignafélag Hafnarfjarðar
 Íróttamiðstöðin Kaplatrika

0604-A

Landnúmer: 121342
 Stgr. 48001000

HLUTATEIKNINGAR

INNRETTINGAR
 ELDHÚS

MKV.: 1:20
 TEIKNAD: SE/AMT/BSS/UBE
 ÚTGÁFA DAGS: 18.05.2007
 STOFN. DAGS: 13.09.2008

(79)-A06-009
 ÚTGÁFA 00

Jón Ólafur Ólafsson FAI
 kt. 090658-2009

Sigurður Elínarson FAI
 kt. 110451-2789

Sigurður Harðarson FAI
 kt. 030448-3999

BATTERÍÐ
 ARKITEKTUR

kt. 521231-1259
 Trénuhraun 1
 220 Hafnarfjörður

S: 54 54 700 P: 54 54 701
 Netfang: batteri@arkitekt.is
 Heimasíða: www.arkitekt.is

© BATTERÍÐ EHF
 ÖLL AFRÉTT OG AFRÉTTUN TEIKNINGAR AD HLUTA EDA HELD ER VÁÐ SKRIFLEGU LEYVI HOFUANDA