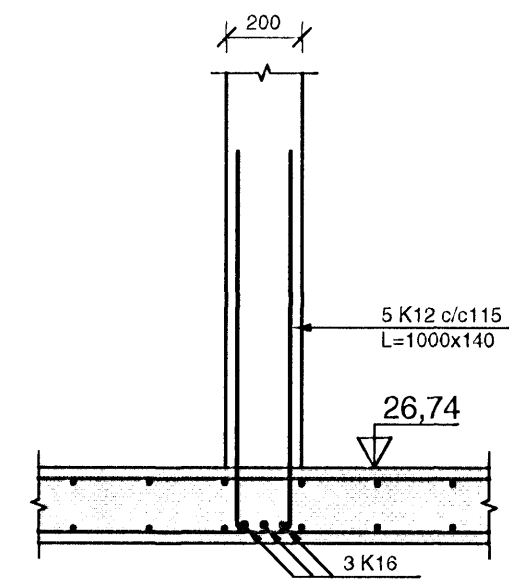
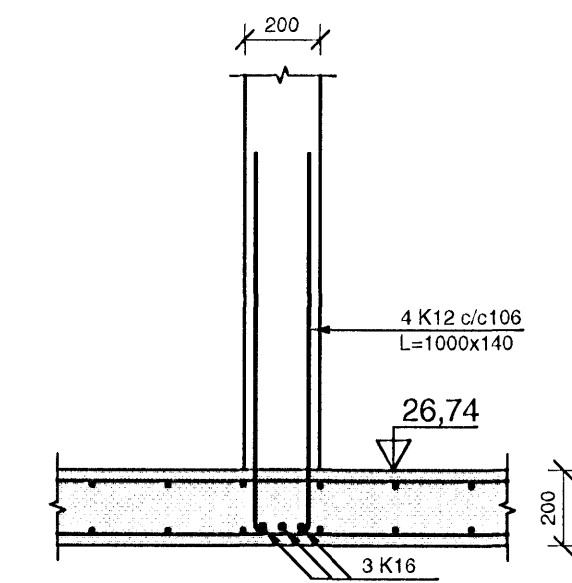


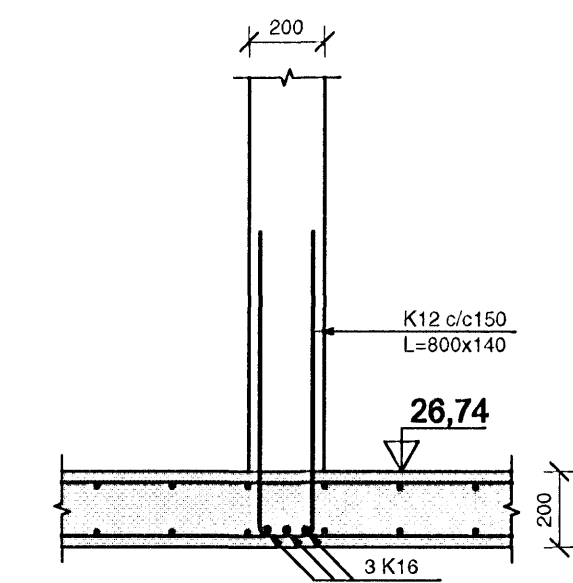
SNID 1:20 (B2-02)



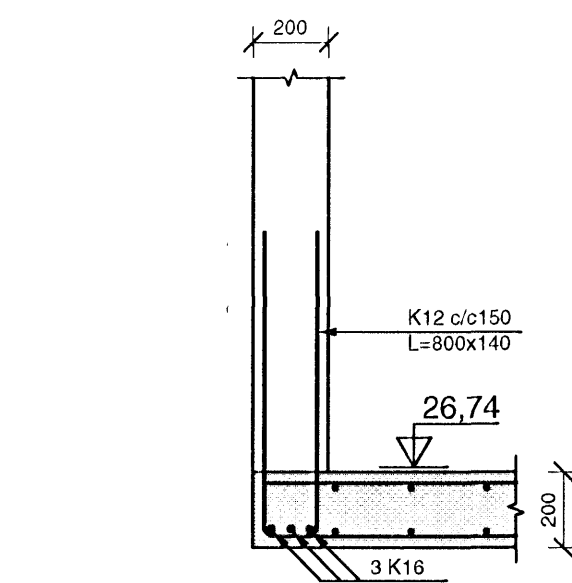
SNID 1:20 (B2-02)



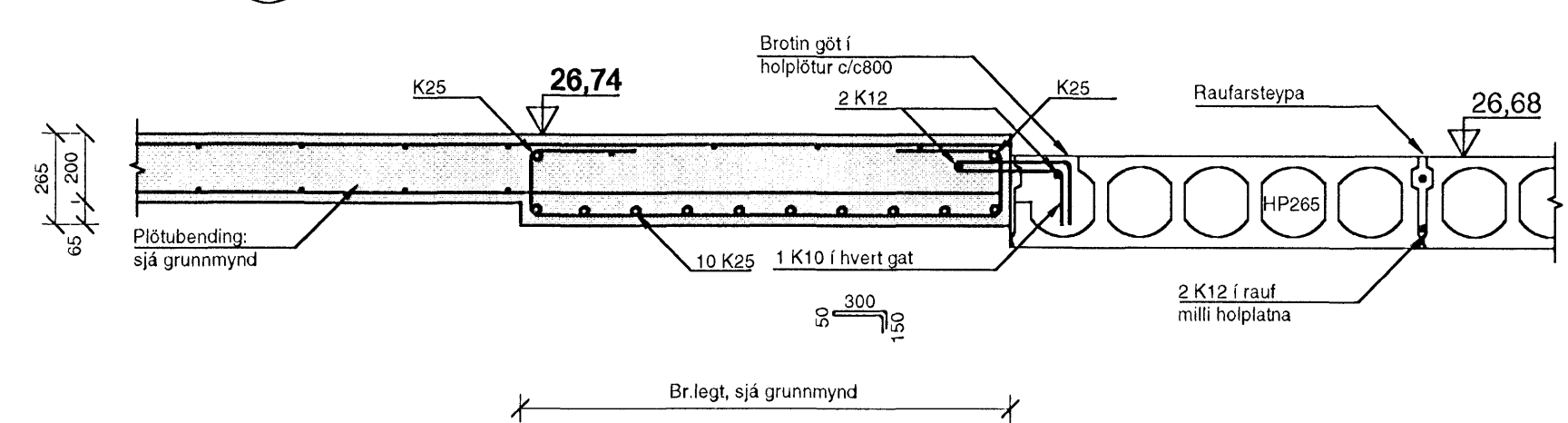
SNID 1:20 (B2-02)



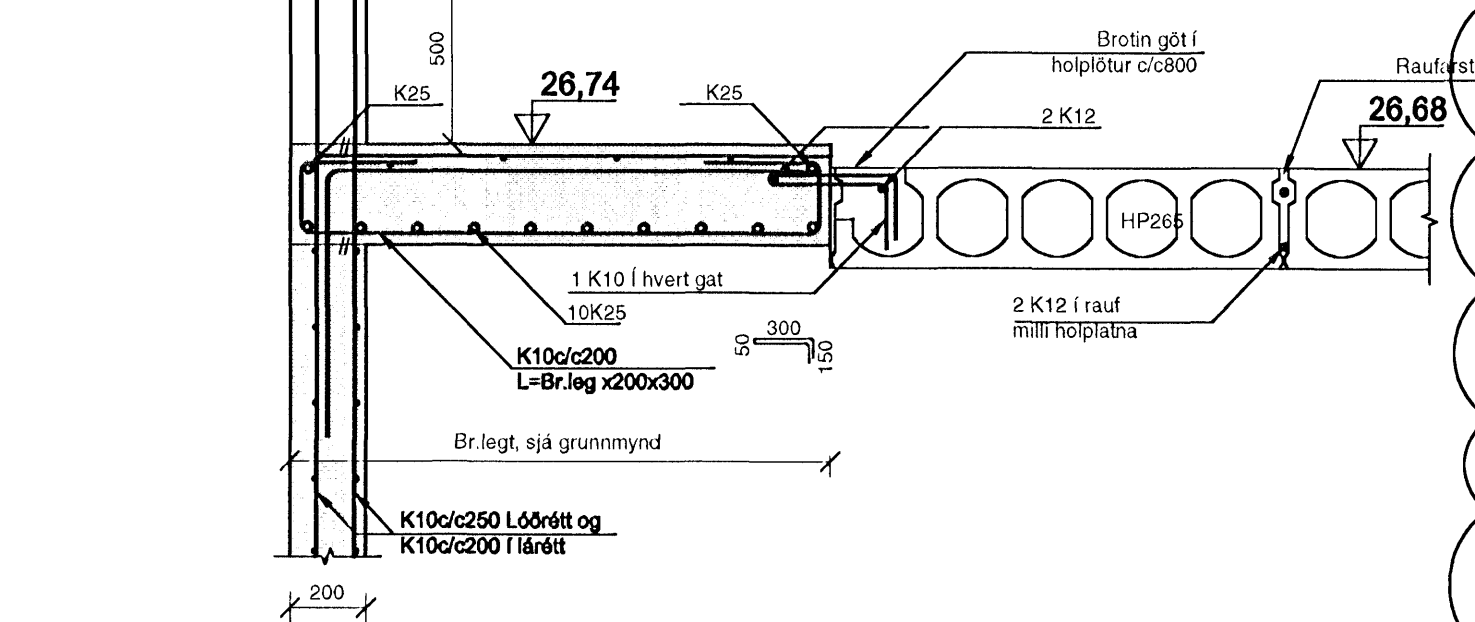
SNID 1:20 (B2-02)



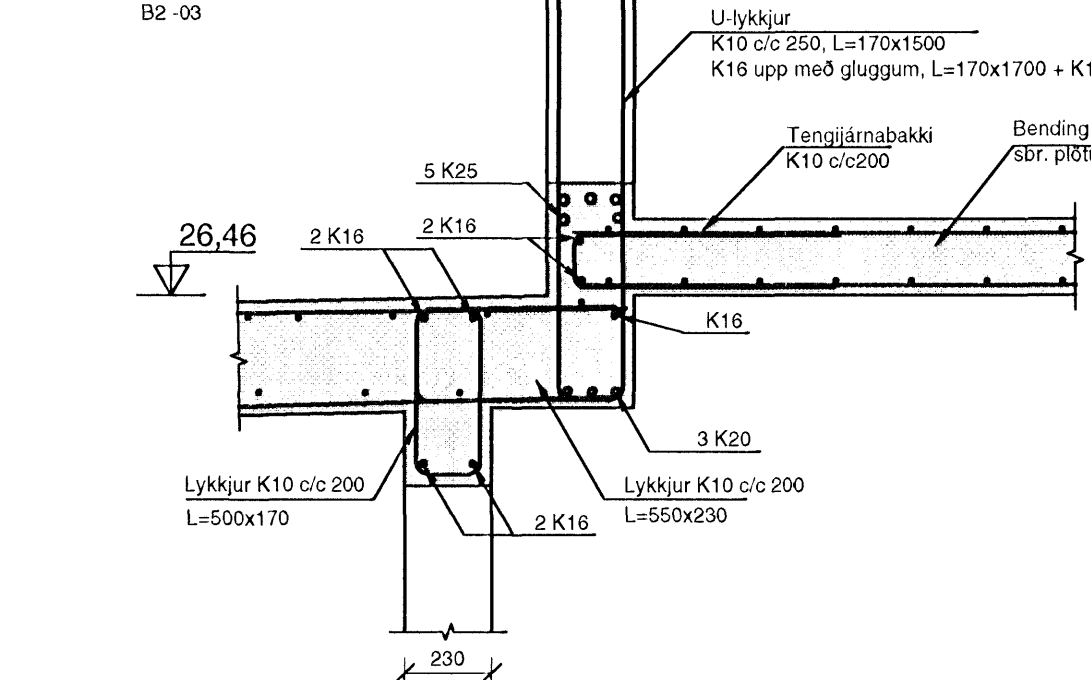
SNID 1:20 (B2-02)



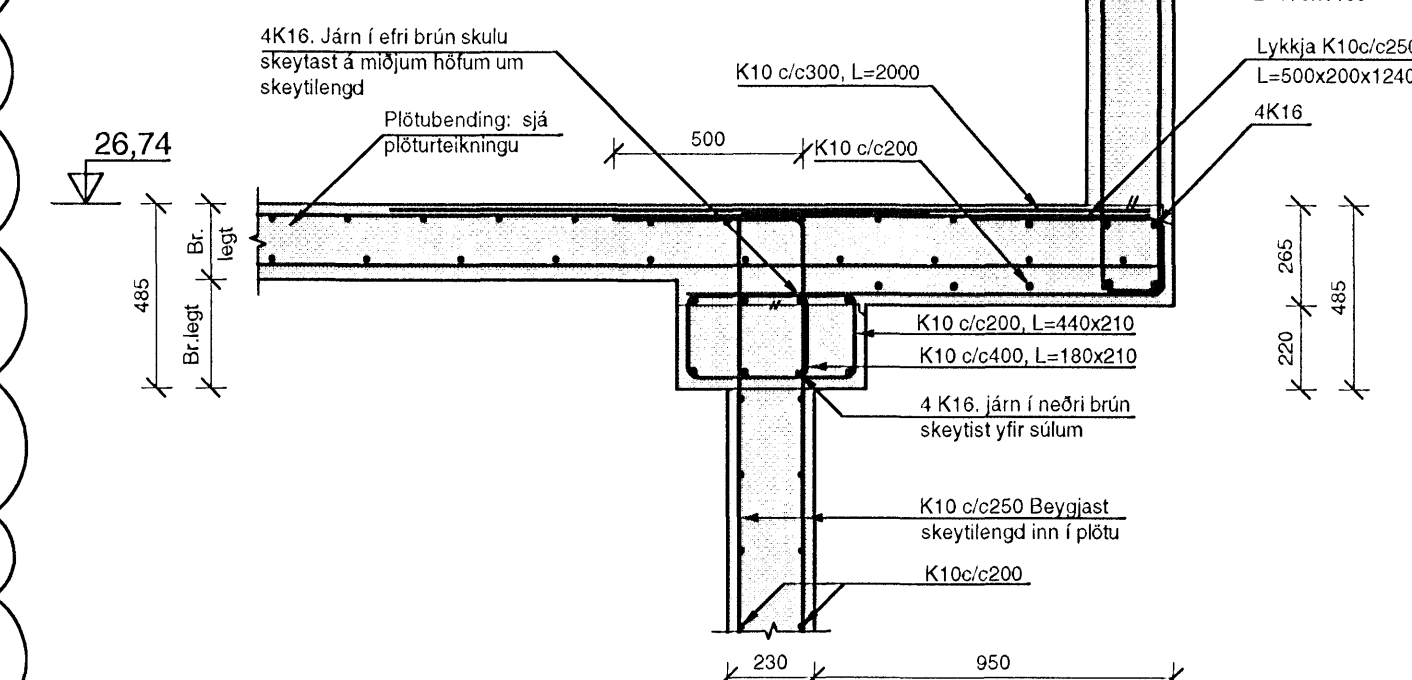
SNID 1:20 (B2-02)



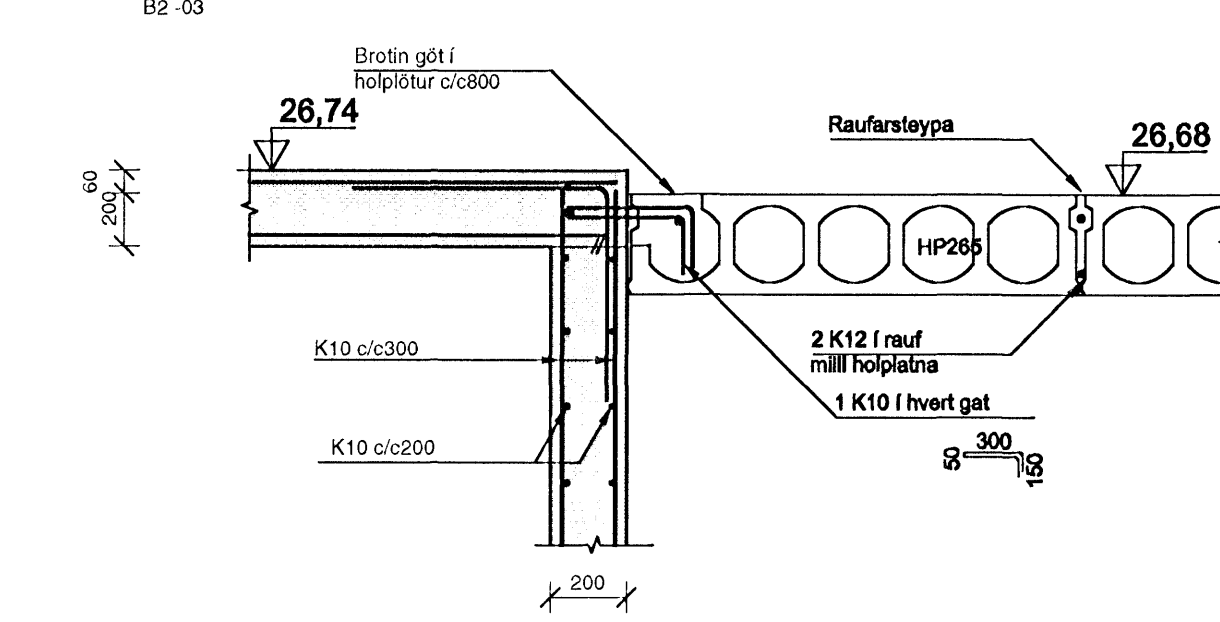
SNID 1:20 (B2-03)



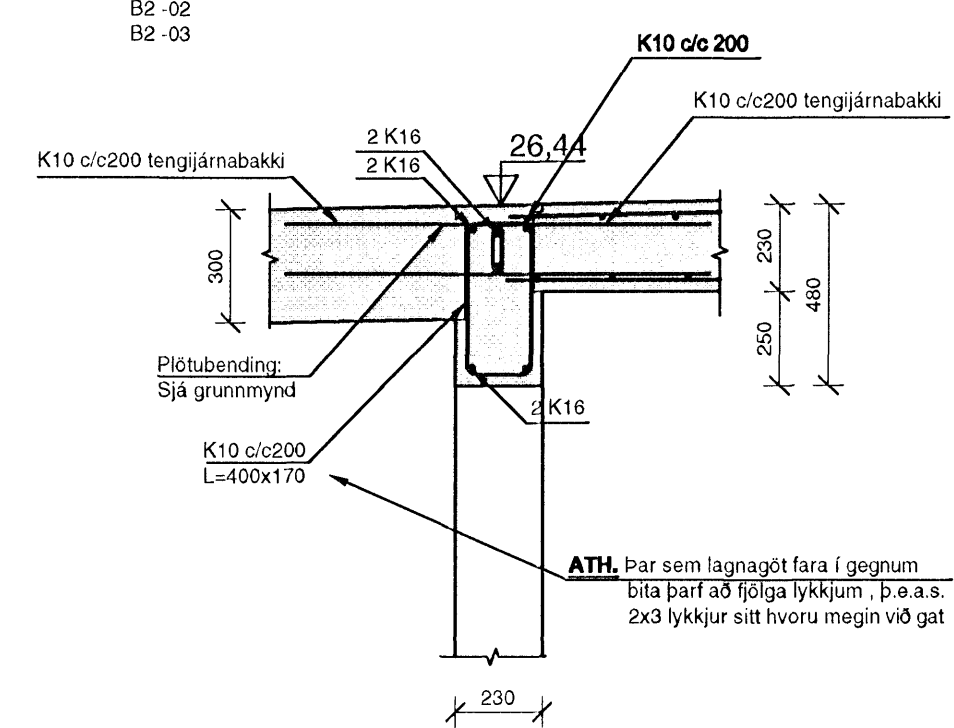
SNID 1:20 (B2-02)



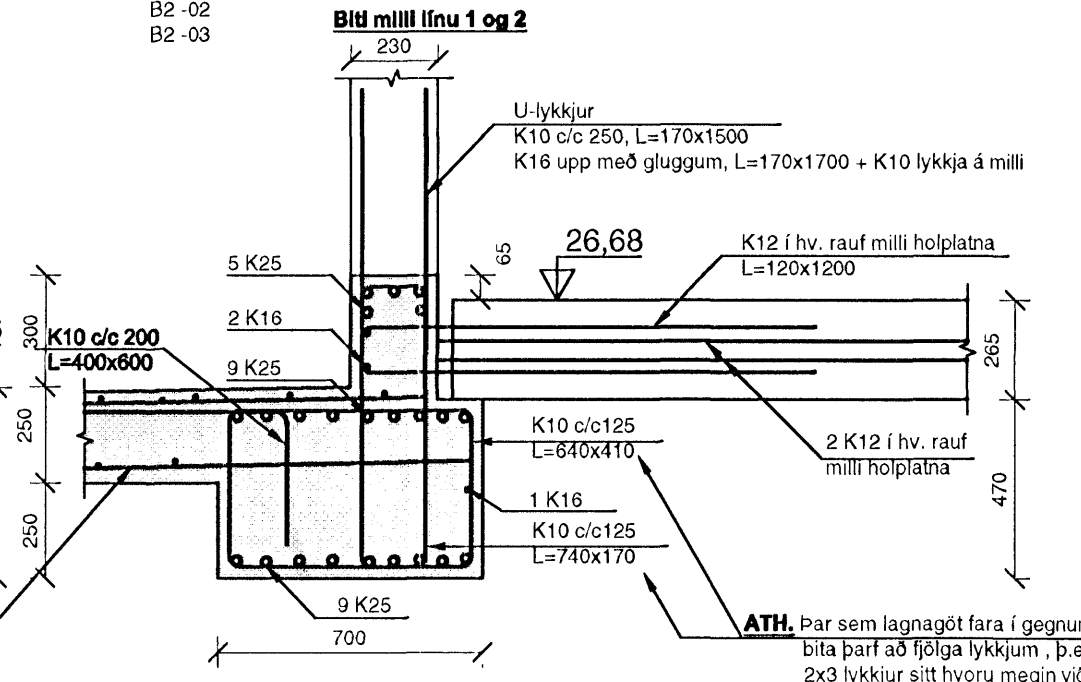
SNID 1:20 (B2-03)



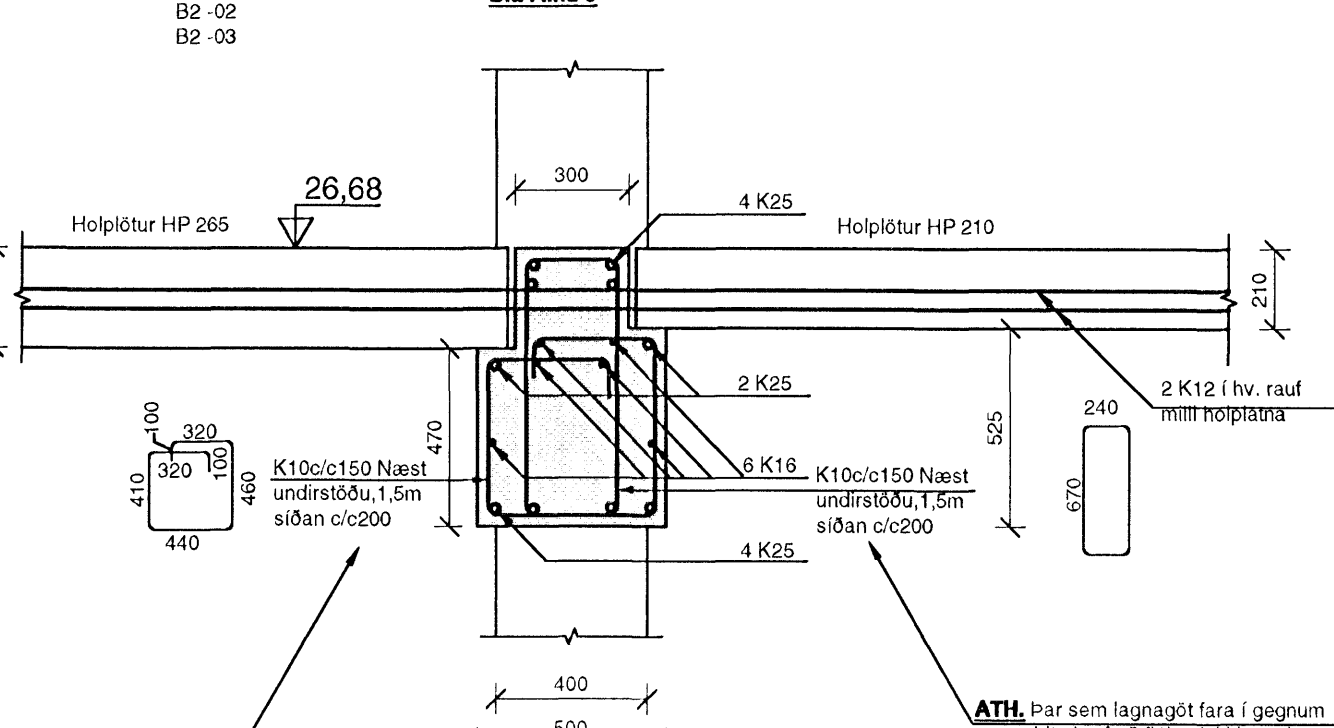
SNID 1:20 (B2-03)



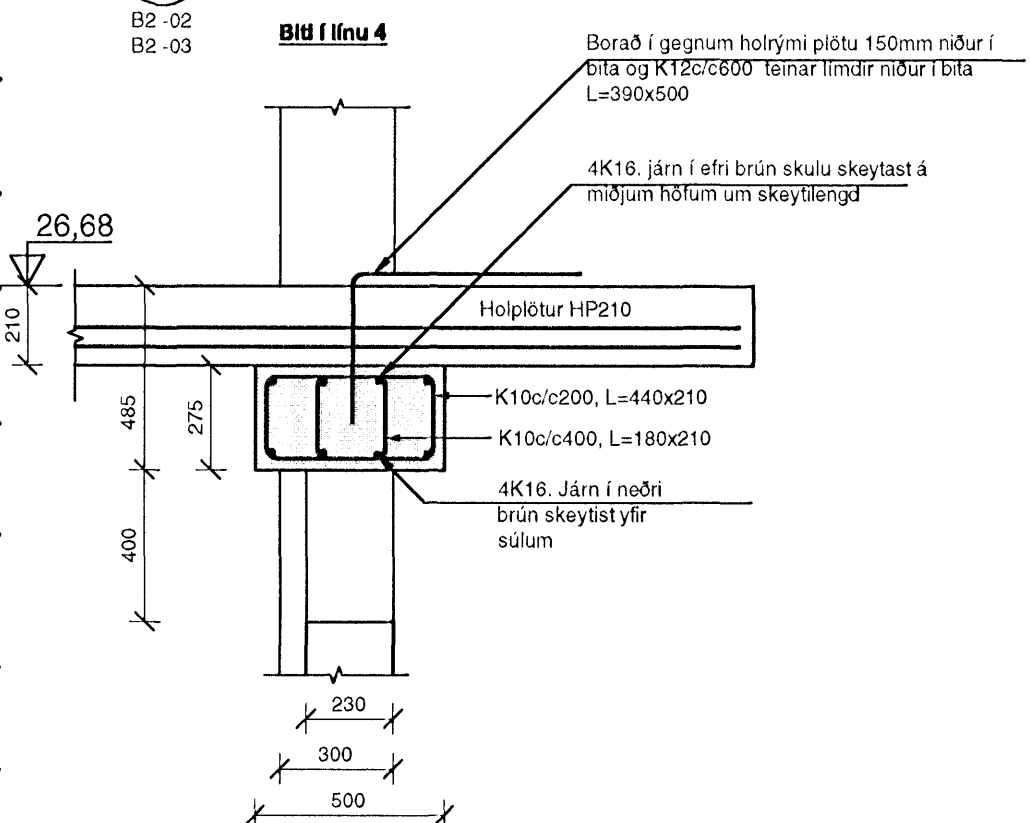
SNID 1:20 (B2-03)



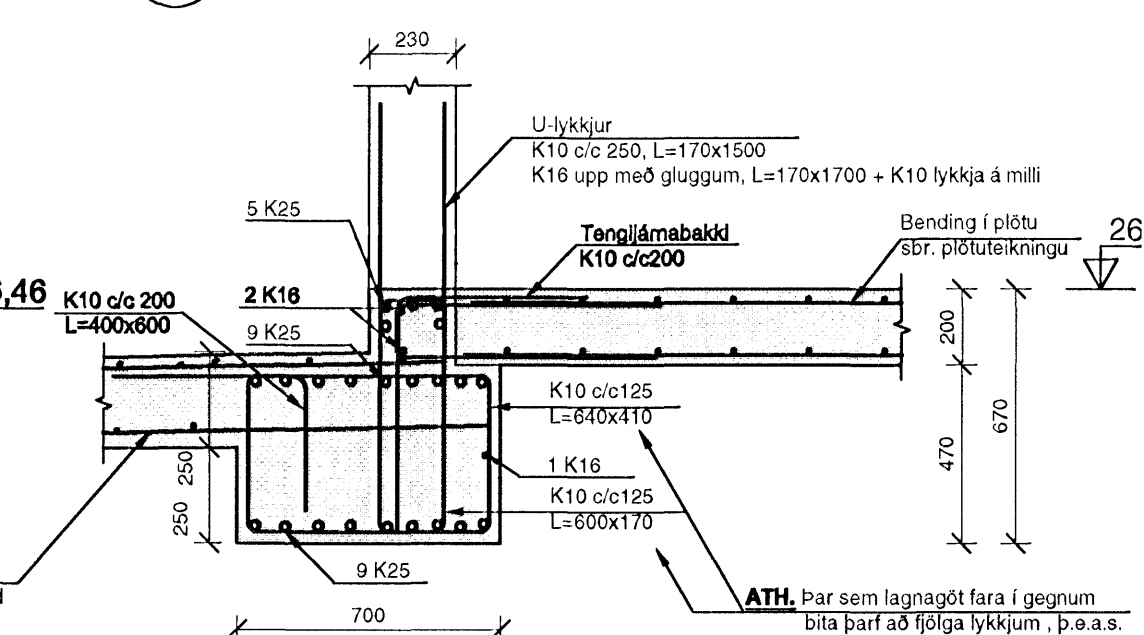
SNID 1:20 (B2-03)



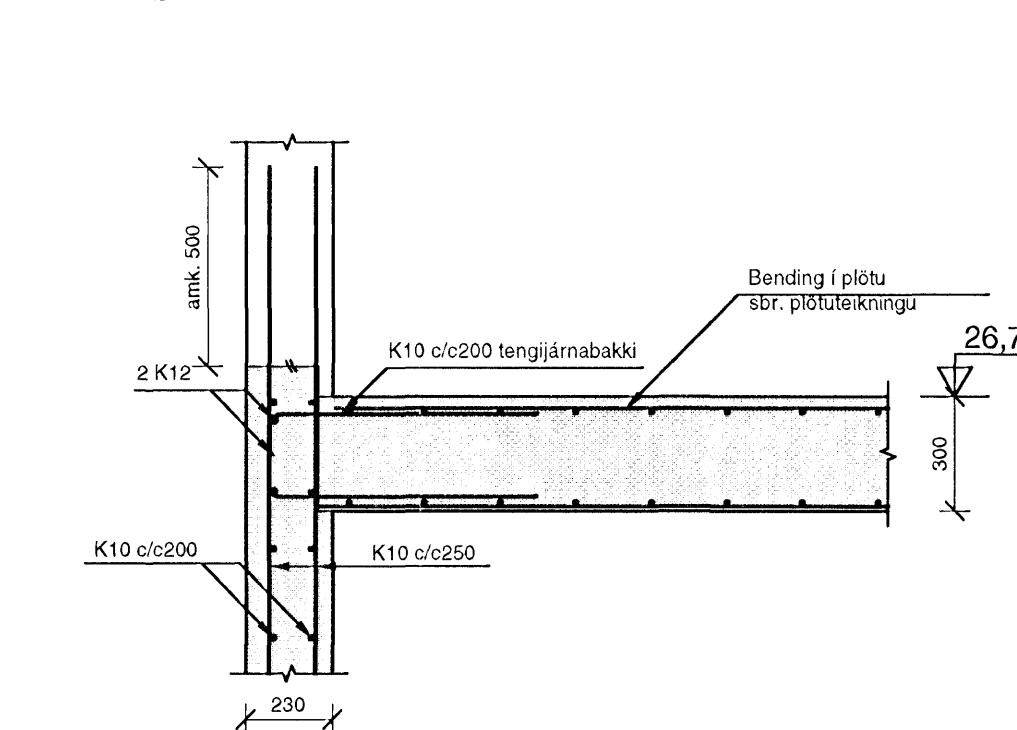
SNID 1:20 (B2-03)



SNID 1:20 (B2-02)



SNID 1:20 (B2-01)



Samþykkt þann 3. MARS 2008 Byggingarfulltrúinn í Hafnarfirði F.h. Hrólfur S. Gunnlaugsson

SKÝRINGAR

BENDING: Almennt skal bending úttegja vera tvöföld grind, lóðrétt K10c/c250 og lárétt K10c/c200 nema annað sé tekið fram.

Almennt skal bending innveggja vera tvöföld grind, lóðrétt K10c/c300 og lárétt K10c/c200 nema annað sé tekið fram.

Almennt skal tengibending útteggjar og steypra plata vera tvöfaldar tengijámaskúlfur með K10 c/c200 og 2 K12 i lykkjum tengijáma.

Tengijám upp í vegg efrir hæðar standa minnst skeytilengd upp úr plötu

HK = Steypukóti

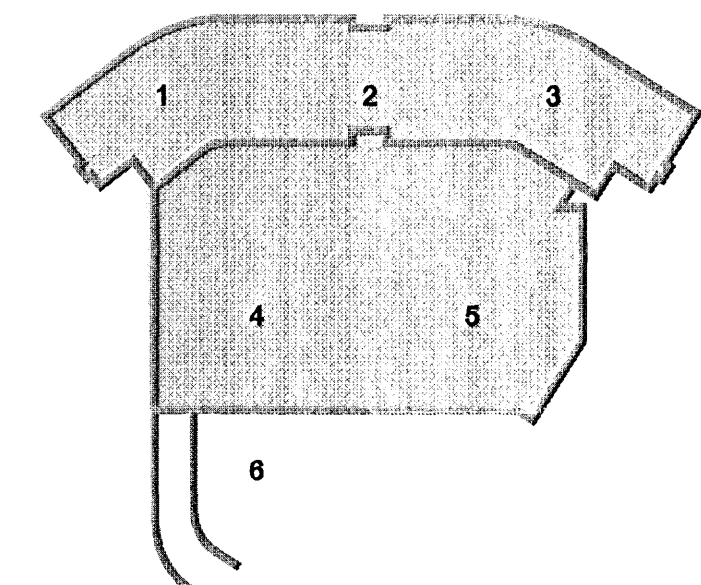
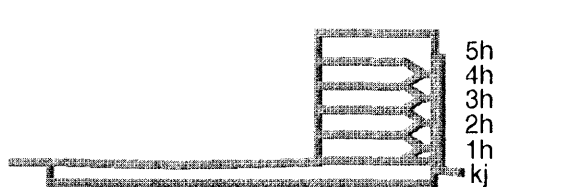
TILVÍSANIR:

Almennar skýringar: sjá bl.nr.07244-B0 000

Málsetningar á veggjum: Teikning arkitekts

Göt í plötum og veggjum: sjá teikningu lagnahönnuða

DALSHRAUN 3



A 20.02.08 Lagfæringar á sniðum í skjý ásamt nýjum sniðum SJ/HJ Utg. Dags. Skýring Hannað/Virfanó

VSF

VERKFRÆDISTOFA

B/E: JARHRAUN 20 • 220 HAFNARFJÓRDUR • KENNIT: 710706-2899 vsb@vsb.is • Sími 585 8600 • Fax 585 8610 • www.vsb.is

Antun sérhönnuðar Björn Gústafsson Kt. 180550 4889 • bjorn@vsb.is Verkhenn: DALSHRAUN 3 HAFNARFIRÐI Verkhlaus Burðarvirki Plötur og veggir Snið og sérmýndir Hannað SJ Verkhlaus Vyrfanó Kvarði 1:50 / A1 Síða - Dags. 11.02.2008 Verkhlaus Teikning B9 002 Utgáfa A

ÚTI ARKITEKTAR Jón Þór Þorvaldsson Al, FSSA Kt. 021256 7579

V:\2007\07244\1\07244-Dalshraun 3\Sheets\BUB9 - Snið og sérmýndir.dwg