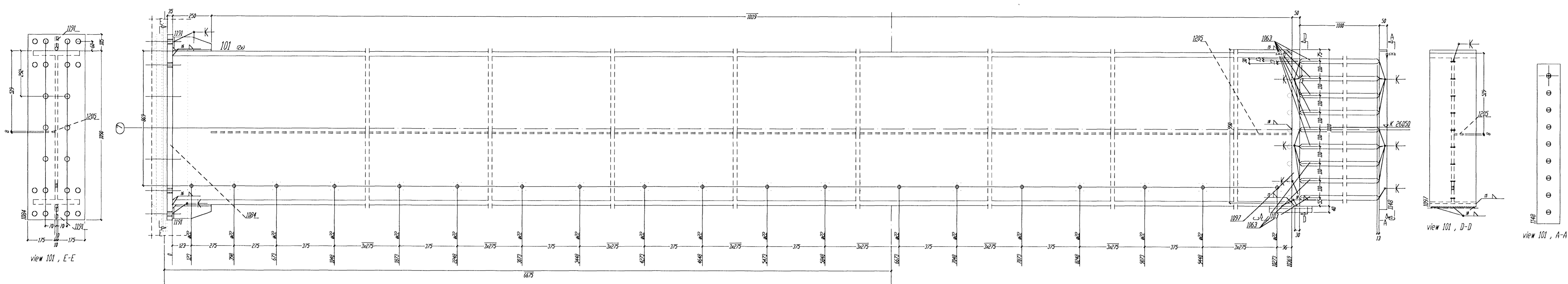


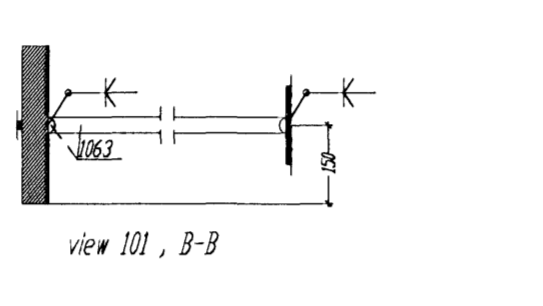
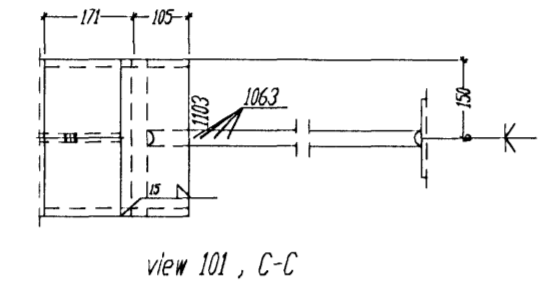
Bygginguáttalinn
Almannatilið
18 FEB 2008
UPS



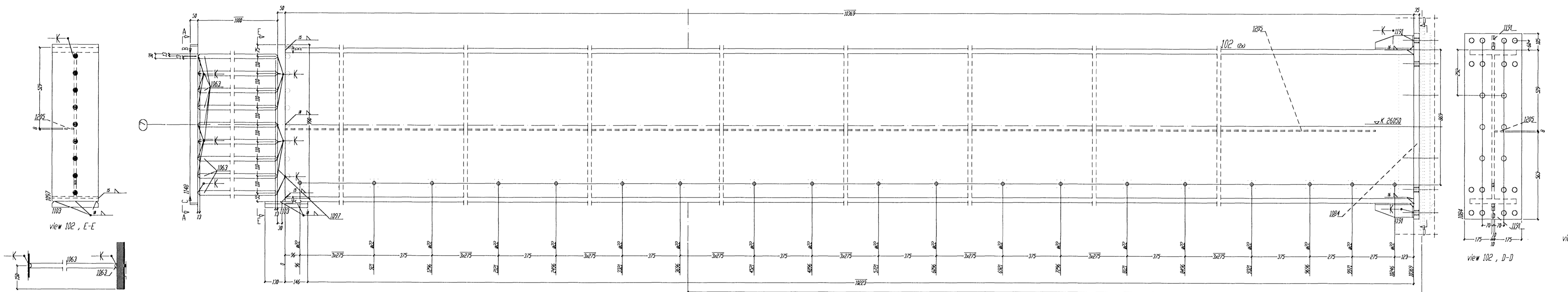
Bill of material for 1 Shop- POS. 101 total 2 x done

№	Trn	pos	description	sty	prcm	quantity	length	weight	dim
1	A	101	TRAILER	1	HEA100	SEPS.ARC	10363	2883.37	
2	A	1083		9	RUNDST	SEPS.ARC	1000	43.94	
3	A	1084	PLATTE	1	R.20X70	SEPS.ARC	1195	121.48	
4	A	1097		1	R.20X70	SEPS.ARC	1000	118.93	
5	A	1103		1	R.40X60	SEPS.ARC	276	26.40	
6	A	1148		1	FL150X8	SEPS.ARC	1038	66.64	
7	A	1191	TRAILER	2	R.20X8	SEPS.ARC	250	7.86	
8	A	1205		1	FL150X8	SEPS.ARC	1038	38.13	
total weight (kg)									3242.55

Shipping dimensions 01 x B x L x 1195 x 370 x 1154



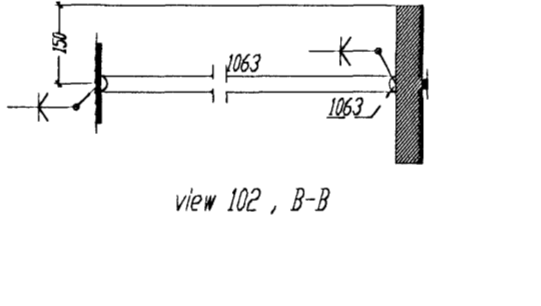
view 101, D-D
view 101, A-A



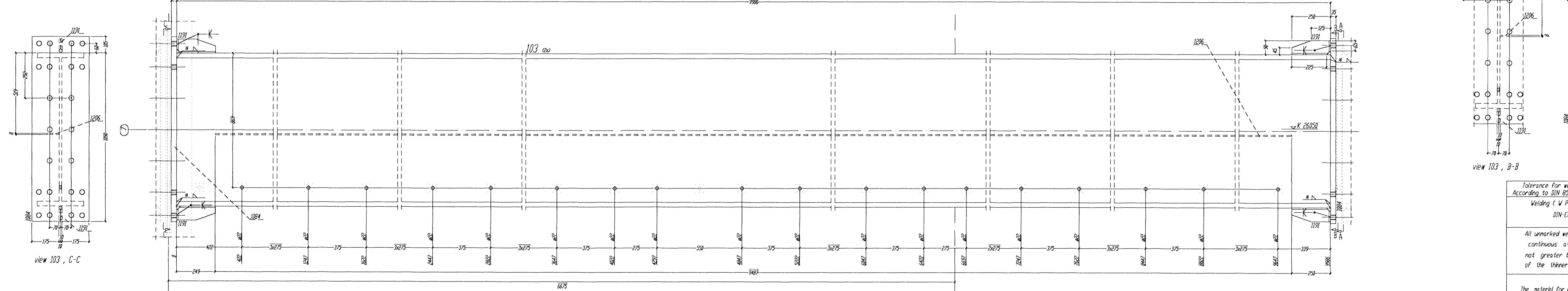
Bill of material for 1 Shop- POS. 102 total 2 x done

№	Trn	pos	description	sty	prcm	quantity	length	weight	dim
1	A	102	TRAILER	1	HEA100	SEPS.ARC	10363	2883.37	
2	A	1083		9	RUNDST	SEPS.ARC	1000	43.94	
3	A	1084	PLATTE	1	R.20X70	SEPS.ARC	1195	121.48	
4	A	1097		1	R.20X70	SEPS.ARC	1000	118.93	
5	A	1103		1	R.40X60	SEPS.ARC	276	26.40	
6	A	1148		1	FL150X8	SEPS.ARC	1038	66.64	
7	A	1191	TRAILER	2	R.20X8	SEPS.ARC	250	7.86	
8	A	1205		1	FL150X8	SEPS.ARC	1038	38.13	
total weight (kg)									3242.55

Shipping dimensions 01 x B x L x 1195 x 370 x 1154



view 102, D-D
view 102, A-A



Bill of material for 1 Shop- POS. 103 total 2 x done

№	Trn	pos	description	sty	prcm	quantity	length	weight	dim
1	A	103	TRAILER	1	HEA100	SEPS.ARC	9688	2716.02	
2	A	1084	PLATTE	2	R.20X70	SEPS.ARC	1195	242.96	
3	A	1191	TRAILER	4	R.20X8	SEPS.ARC	250	14.13	
4	A	1196		1	FL150X8	SEPS.ARC	1401	22.73	
total weight (kg)									3096.84

Shipping dimensions 01 x B x L x 1195 x 370 x 1156

view 103, B-B
view 103, A-A

Fyrir hönd Conis ehf. kt. 600105-1400
staðfestist að teikning þessi hefur verið
yfirlarin. Teikningin er í samræmi við
íslenska staðla og reglugerðir. 21/9/07
Nafn: *Guðmundur* 130657-4439
Kennitala

Tolerance for welded constructions
According to DIN 8570, Pt.1+2/9/F.1087

Welding (V P S) according to
DIN-EN 288 - 2

All unmarked welds to be fillet
continuous a=4mm thick,
not greater than 0.7 d
of the thinner element

The material for cap plates 20 mm thick
to be examined for laminations

Required torques/prestressing forces and forced
tension angles according to EN 19800 Pt. 7, 8583

1	2	3	4	5	6	7	8	9	10	11	12
...

BIURO INZYNIERSKIE
Marek i Janina MUCHA
Długo, ul. Opolska 30a, 46-070 Komprachcice tel.077-46 46 757

DATE: 21/9/07 NAME: MUKA SIGNATURE: *MUKA*

1:10 SCALE

Pos. 101-103

T.JARNARVELLIR 11
Steel Office part

DRAWING NO. DRG 101 SHEET 1