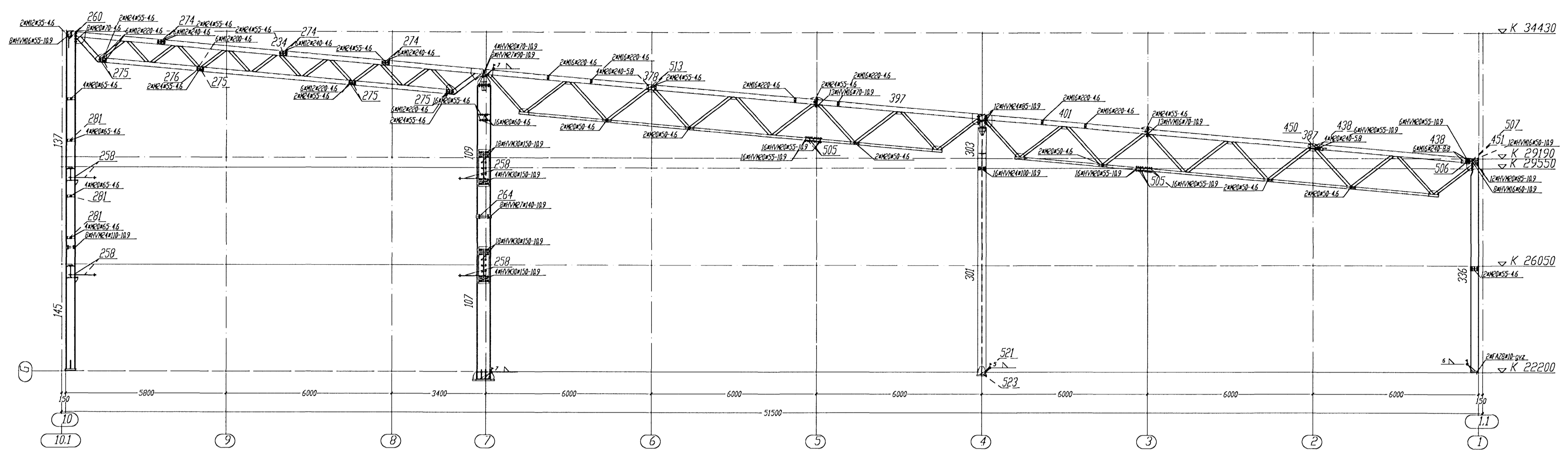
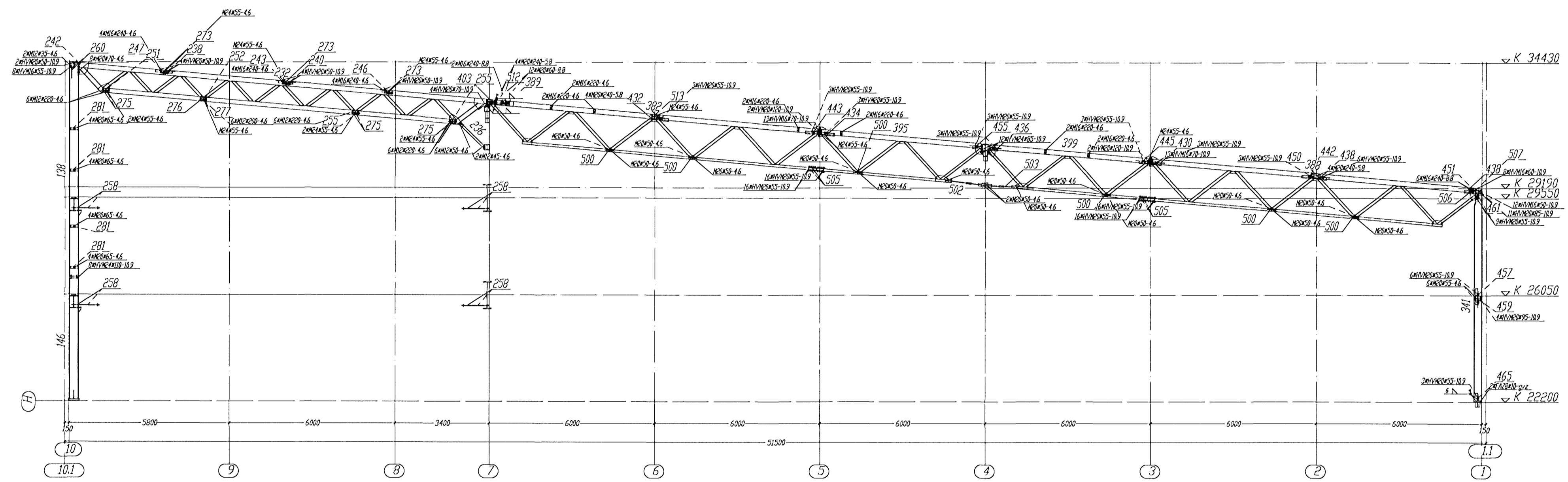


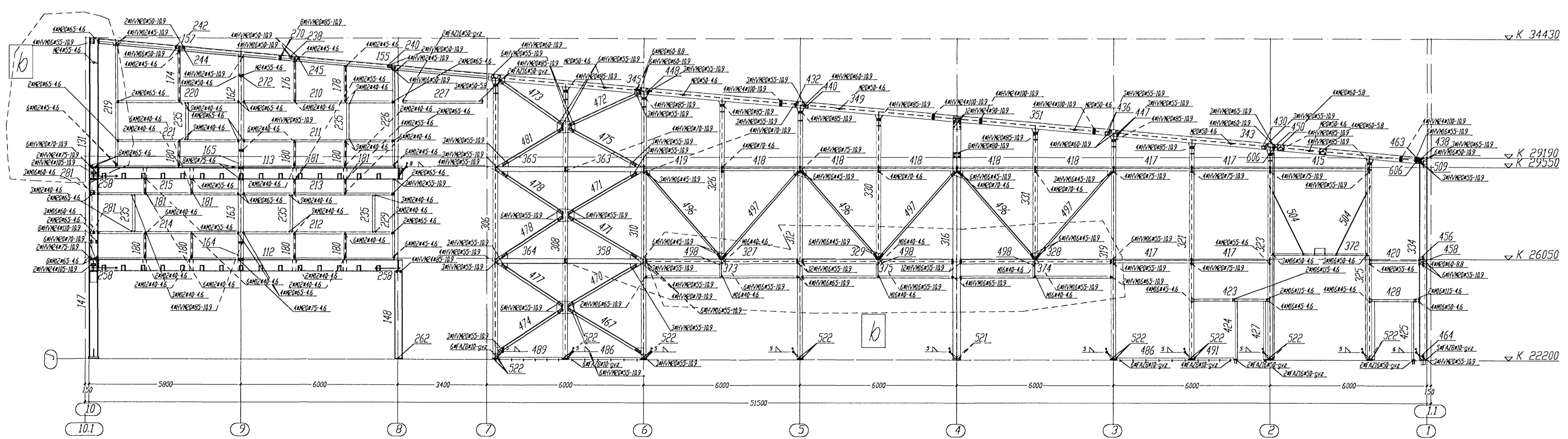
Byggingarhúsið Hámark
Alþróttarvinn
18 FEB 2008
J.P.



SECTION AXIS G Sc. 1:75



SECTION AXIS H Sc. 1:75



SECTION AXIS J Sc. 1:75

Fyrir hönd Conis ehf. kt. 600105-1400
staðfestist að teikning þessi hefur verið
yfirlit. Teikningin er í samræmi við
Íslenska stöðla og reglugerðir. 28/1/07
Nafn *Skinn* 130657-4139
Kennitala

Tolerance for welded constructions
According to DIN 6970, Pt.1-3/2007
Welding € V P S according to
DIN EN 288 - 2

Required torques prestressing forces and forced
tension angles according to DIN 18800 Pt. 7, 05/83

| Weld | Tolerance of fit | | Tolerance of fit | | Tolerance of fit | | Tolerance of fit | |
|------|------------------|-----|------------------|-----|------------------|-----|------------------|-----|
| | mm | mm | mm | mm | mm | mm | mm | mm |
| 1 | 0.5 | 0.5 | 0.5 | 0.5 | 0.5 | 0.5 | 0.5 | 0.5 |
| 2 | 0.5 | 0.5 | 0.5 | 0.5 | 0.5 | 0.5 | 0.5 | 0.5 |
| 3 | 0.5 | 0.5 | 0.5 | 0.5 | 0.5 | 0.5 | 0.5 | 0.5 |
| 4 | 0.5 | 0.5 | 0.5 | 0.5 | 0.5 | 0.5 | 0.5 | 0.5 |
| 5 | 0.5 | 0.5 | 0.5 | 0.5 | 0.5 | 0.5 | 0.5 | 0.5 |
| 6 | 0.5 | 0.5 | 0.5 | 0.5 | 0.5 | 0.5 | 0.5 | 0.5 |
| 7 | 0.5 | 0.5 | 0.5 | 0.5 | 0.5 | 0.5 | 0.5 | 0.5 |
| 8 | 0.5 | 0.5 | 0.5 | 0.5 | 0.5 | 0.5 | 0.5 | 0.5 |
| 9 | 0.5 | 0.5 | 0.5 | 0.5 | 0.5 | 0.5 | 0.5 | 0.5 |
| 10 | 0.5 | 0.5 | 0.5 | 0.5 | 0.5 | 0.5 | 0.5 | 0.5 |

All unworked welds to be fillet
continuous a-fine thick,
not greater than 0.7 s
of the thicker element

The material for cap plates 20 mm thick
to be examined for laminations

BIURO INZYNIERSKIE
Marek i Janina MUCHA
Bszyn, ul. Dulska 30a, 46-070 Komprachcice tel.077-46 46 757

| Project | Date | Name | Signature |
|---------|------|------|-----------|
| | | | |
| | | | |
| | | | |
| | | | |

SECTION AXIS G,H,J
T JARNARVELLIR 11
Steel Office part
DRAWING NO.
DRG 018 b