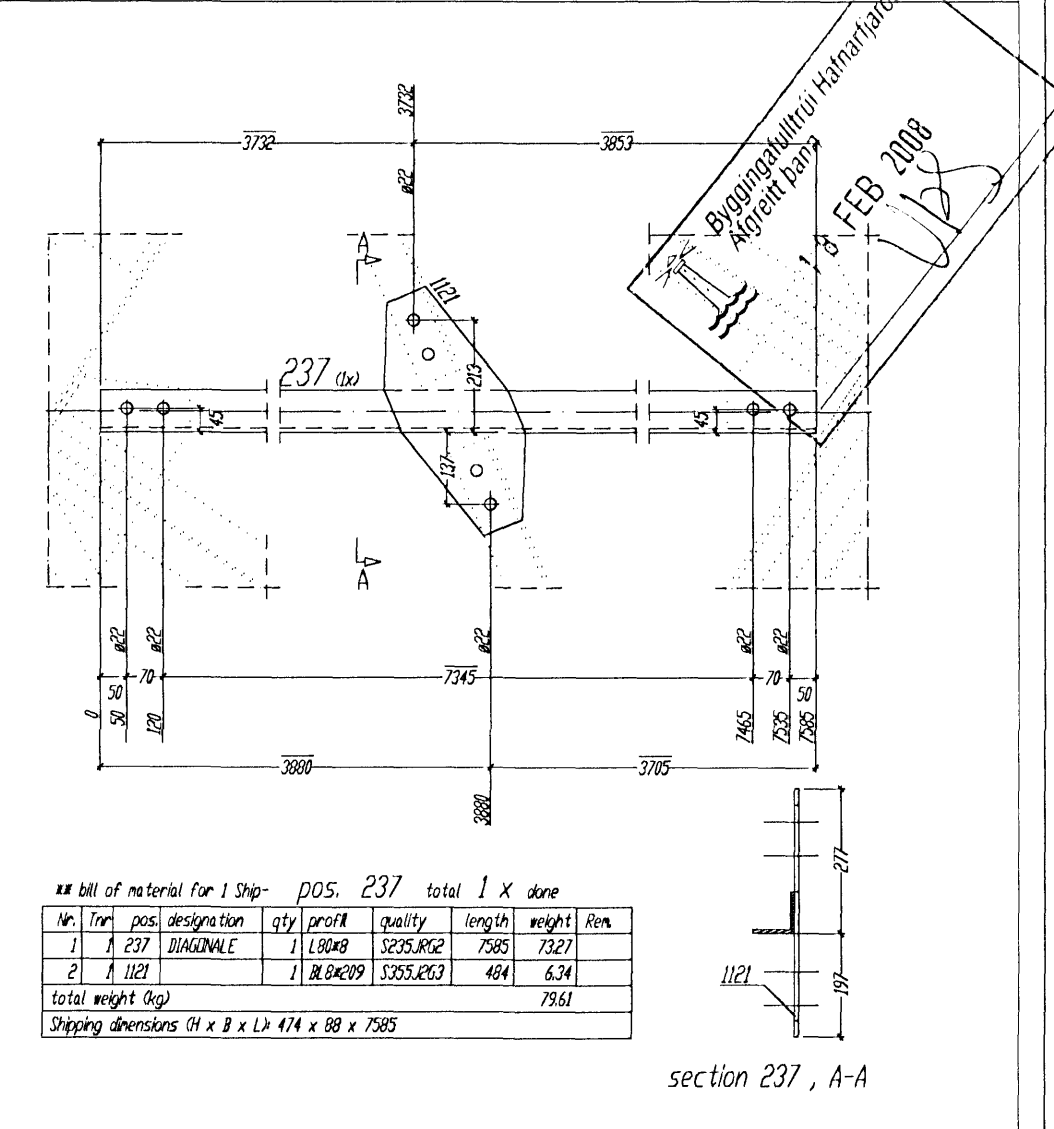
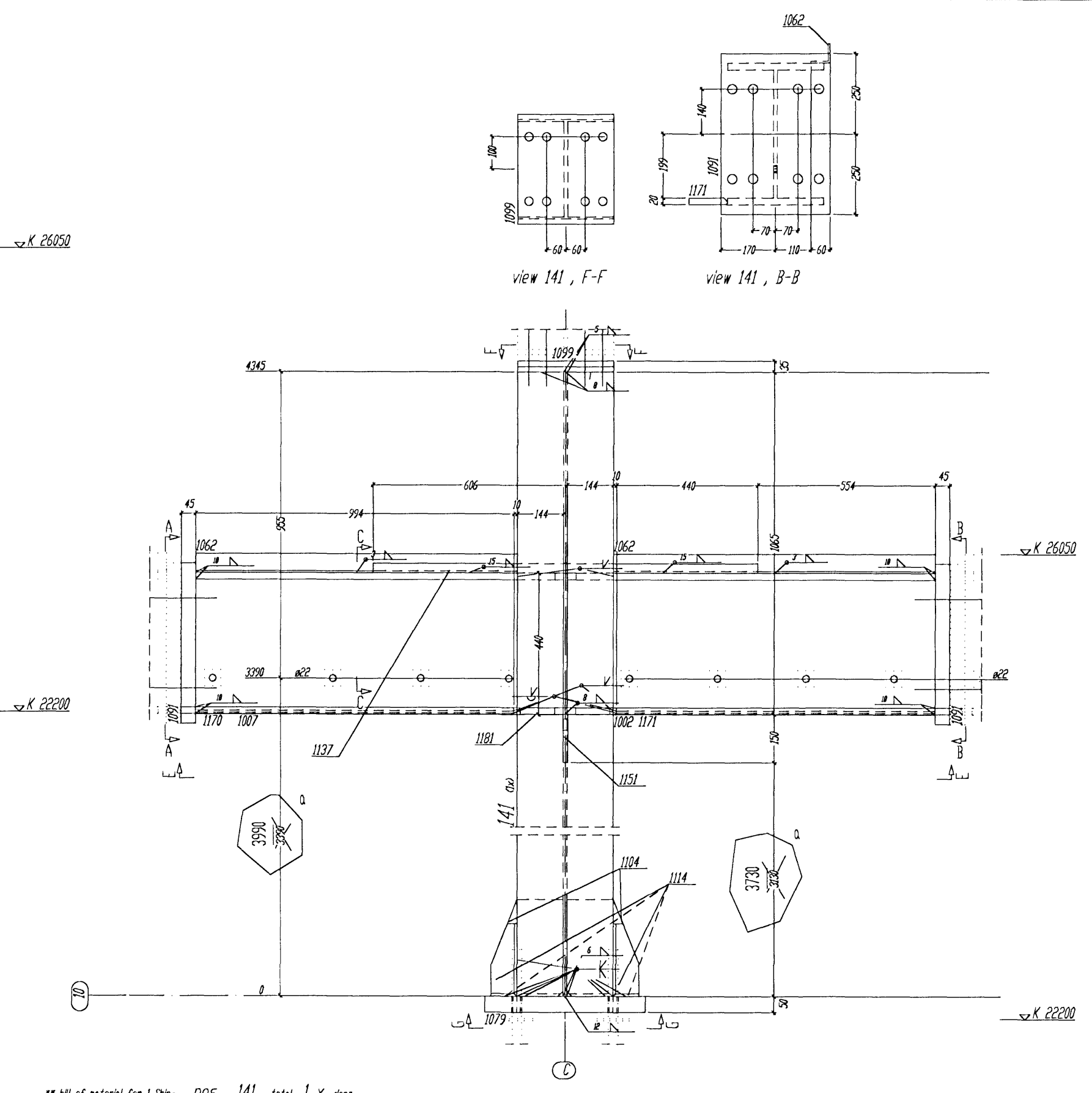
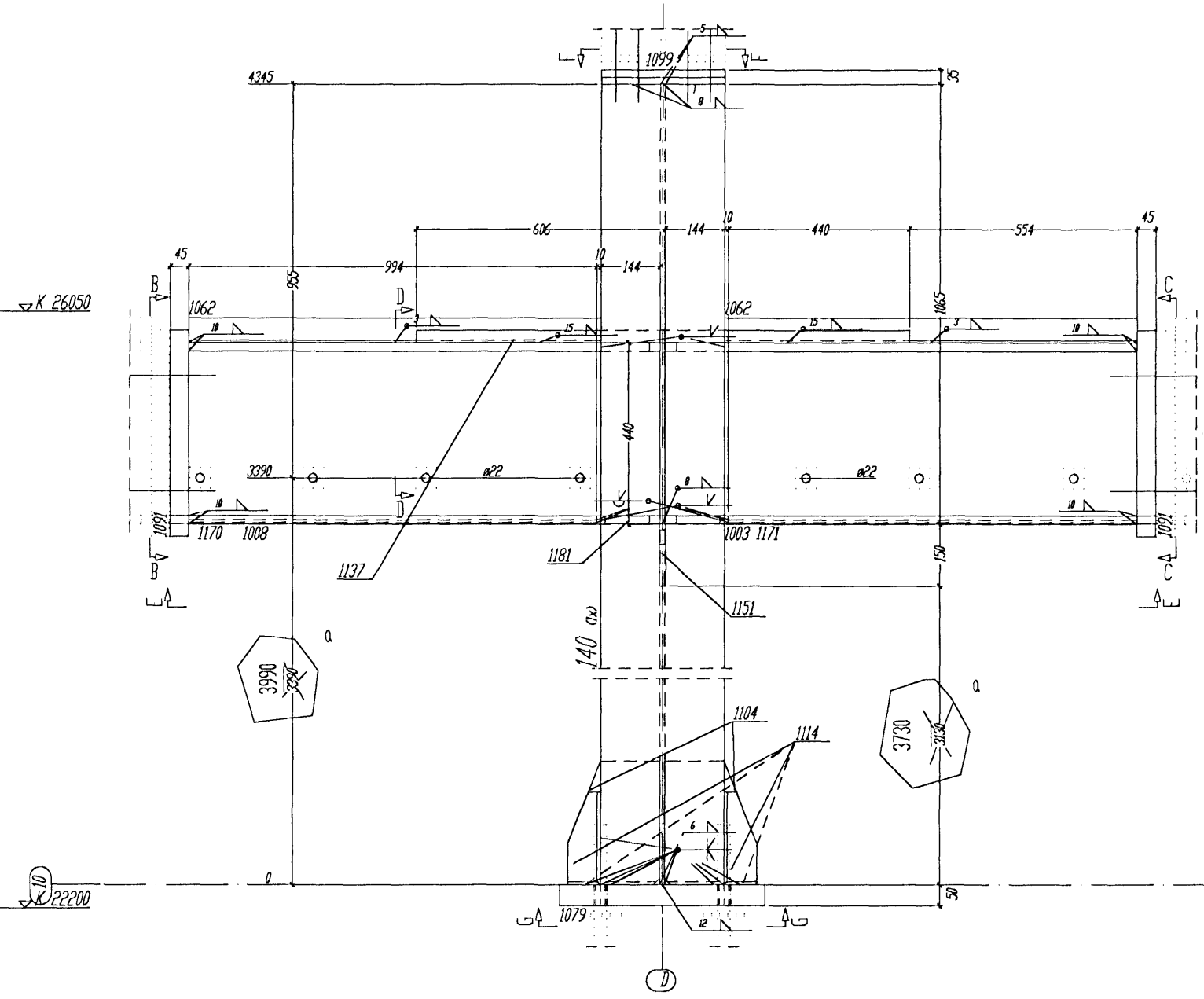
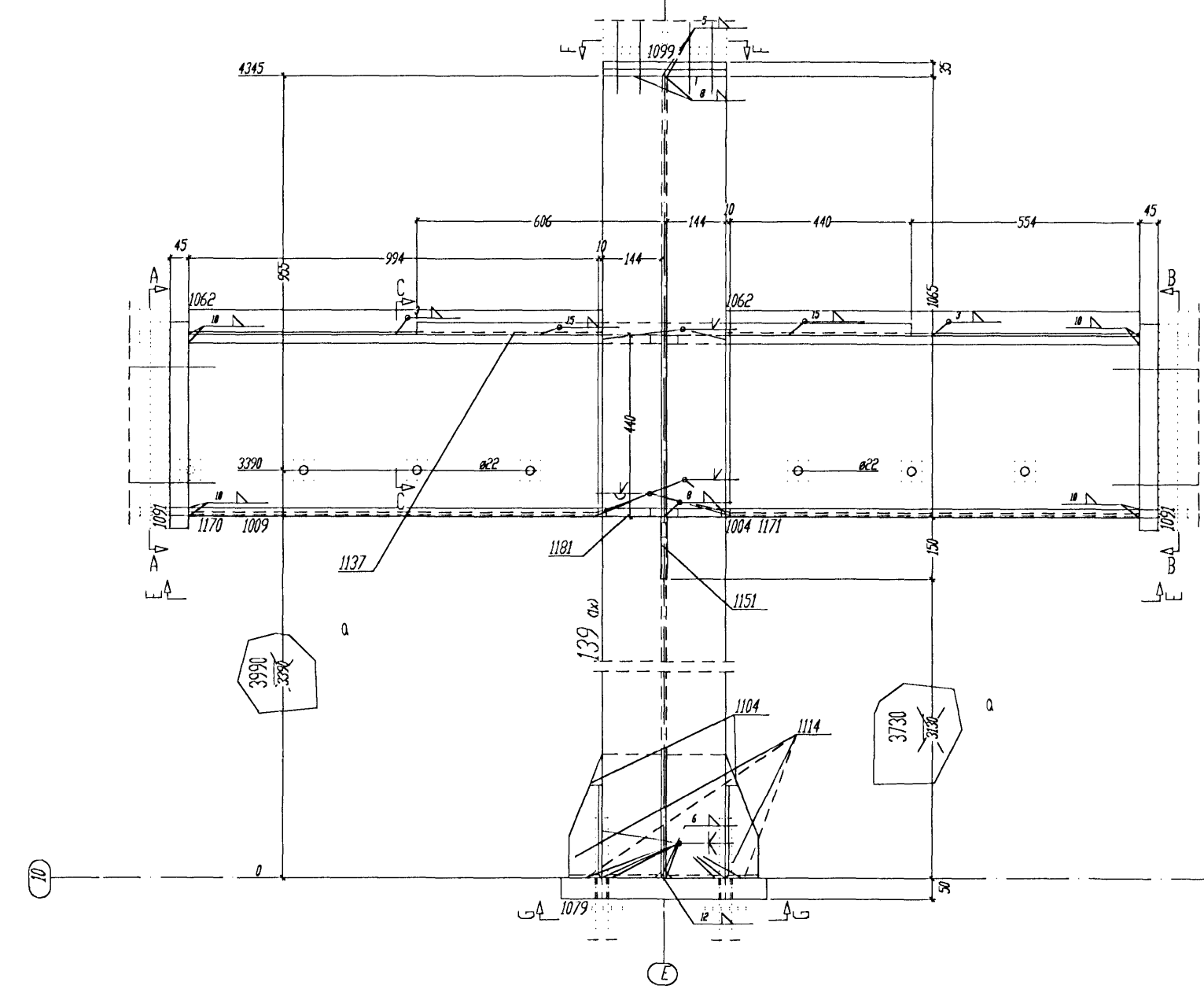


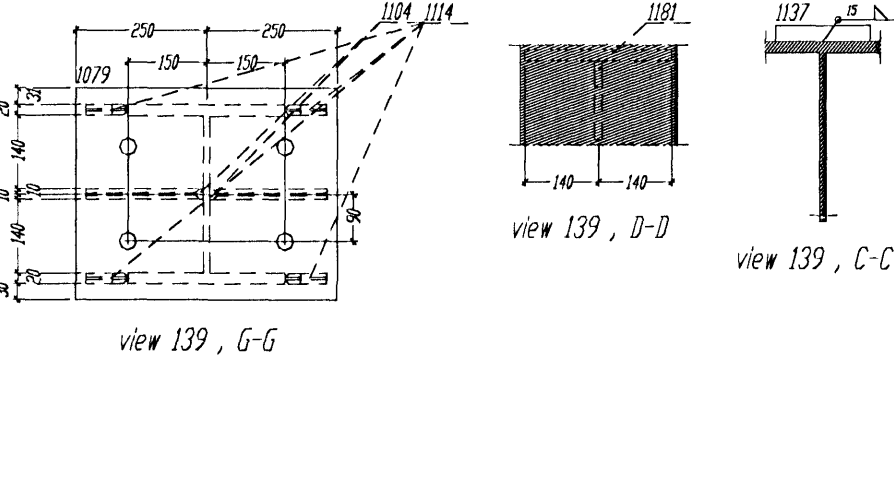
Byggingarhúsið í Hamarinn
 16. FEB 2008



Bill of material for 1 Dip. POS. 139 total 1 X done

Nr	Part pos.	designation	qty	prof	quality	length	weight	dim	
1	A 139	TRONKUR	1	HEB30	SP25.033	4545	55483		
2	A 1004	TRONKUR	1	HEB30	SP25.033	1140	14072		
3	A 1007	TRONKUR	1	HEB30	SP25.033	1140	14072		
4	A 1062	TRONKUR	2	L606	SP25.032	1054	1108		
5	A 1019	TRONKUR	1	HEB30	SP25.033	500	7870		
6	A 1009	PLATE	2	HEB30	SP25.033	340	2011		
7	A 1009	PLATE	1	HEB30	SP25.033	340	2011		
8	A 1014	TRONKUR	2	HEB30	SP25.033	254	212		
9	A 1114	TRONKUR	4	HEB30	SP25.033	80	1130		
10	A 1117	TRONKUR	1	HEB30	SP25.033	1020	3887		
11	A 1118	TRONKUR	1	HEB30	SP25.033	30	159		
12	A 1119	TRONKUR	1	HEB30	SP25.033	1020	3887		
13	A 1121	TRONKUR	1	HEB30	SP25.033	1020	3887		
14	A 1181	TRONKUR	1	FL0800	SP25.033	280	440		
total weight Dip							28566	13424	

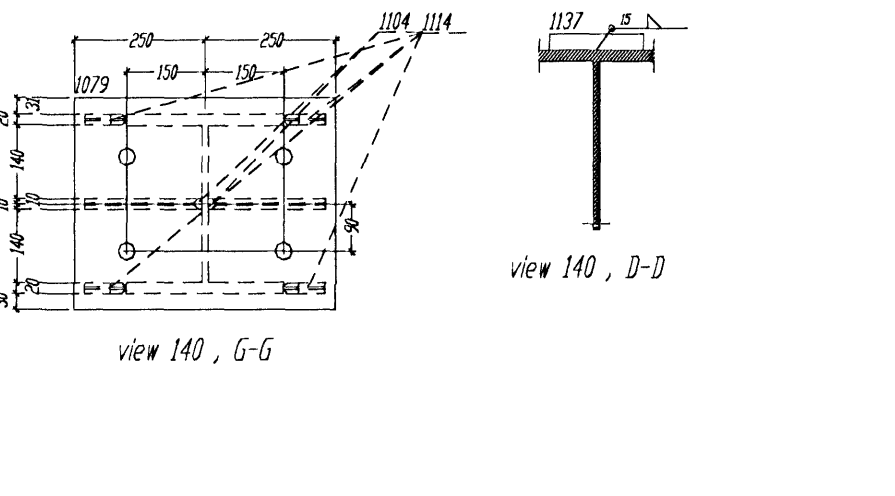
Shipping dimensions 01 x B x L x H 478 x 238 x 448



Bill of material for 1 Dip. POS. 140 total 1 X done

Nr	Part pos.	designation	qty	prof	quality	length	weight	dim	
1	A 140	TRONKUR	1	HEB30	SP25.033	4545	55483		
2	A 1007	TRONKUR	1	HEB30	SP25.033	1140	14072		
3	A 1008	TRONKUR	1	HEB30	SP25.033	1140	14072		
4	A 1062	TRONKUR	2	L606	SP25.032	1054	1108		
5	A 1019	TRONKUR	1	HEB30	SP25.033	500	7870		
6	A 1009	PLATE	2	HEB30	SP25.033	340	2011		
7	A 1009	PLATE	1	HEB30	SP25.033	340	2011		
8	A 1014	TRONKUR	2	HEB30	SP25.033	254	212		
9	A 1114	TRONKUR	4	HEB30	SP25.033	80	1130		
10	A 1117	TRONKUR	1	HEB30	SP25.033	1020	3887		
11	A 1118	TRONKUR	1	HEB30	SP25.033	30	159		
12	A 1119	TRONKUR	1	HEB30	SP25.033	1020	3887		
13	A 1121	TRONKUR	1	HEB30	SP25.033	1020	3887		
14	A 1181	TRONKUR	1	FL0800	SP25.033	280	440		
total weight Dip							28566	13424	

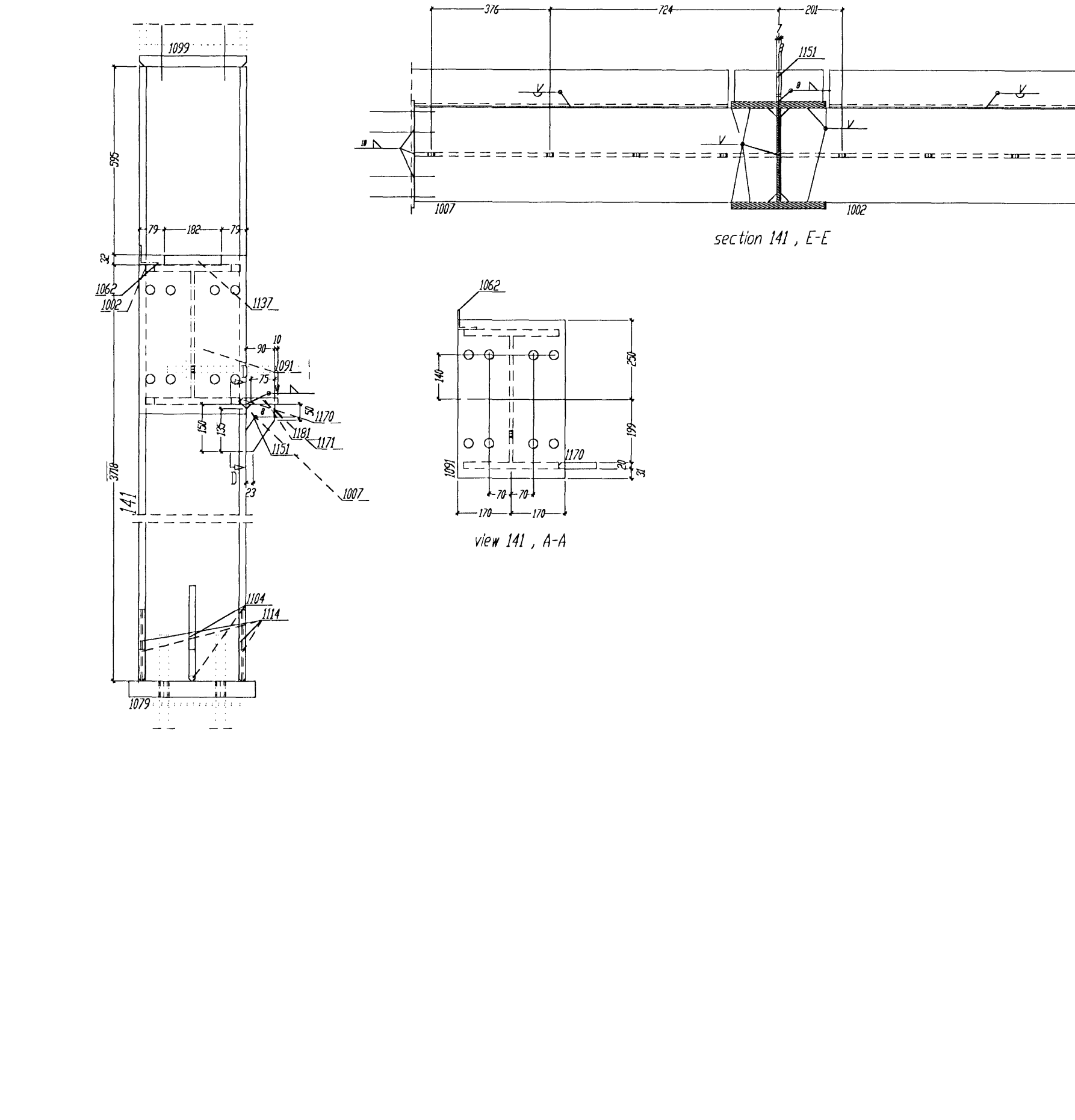
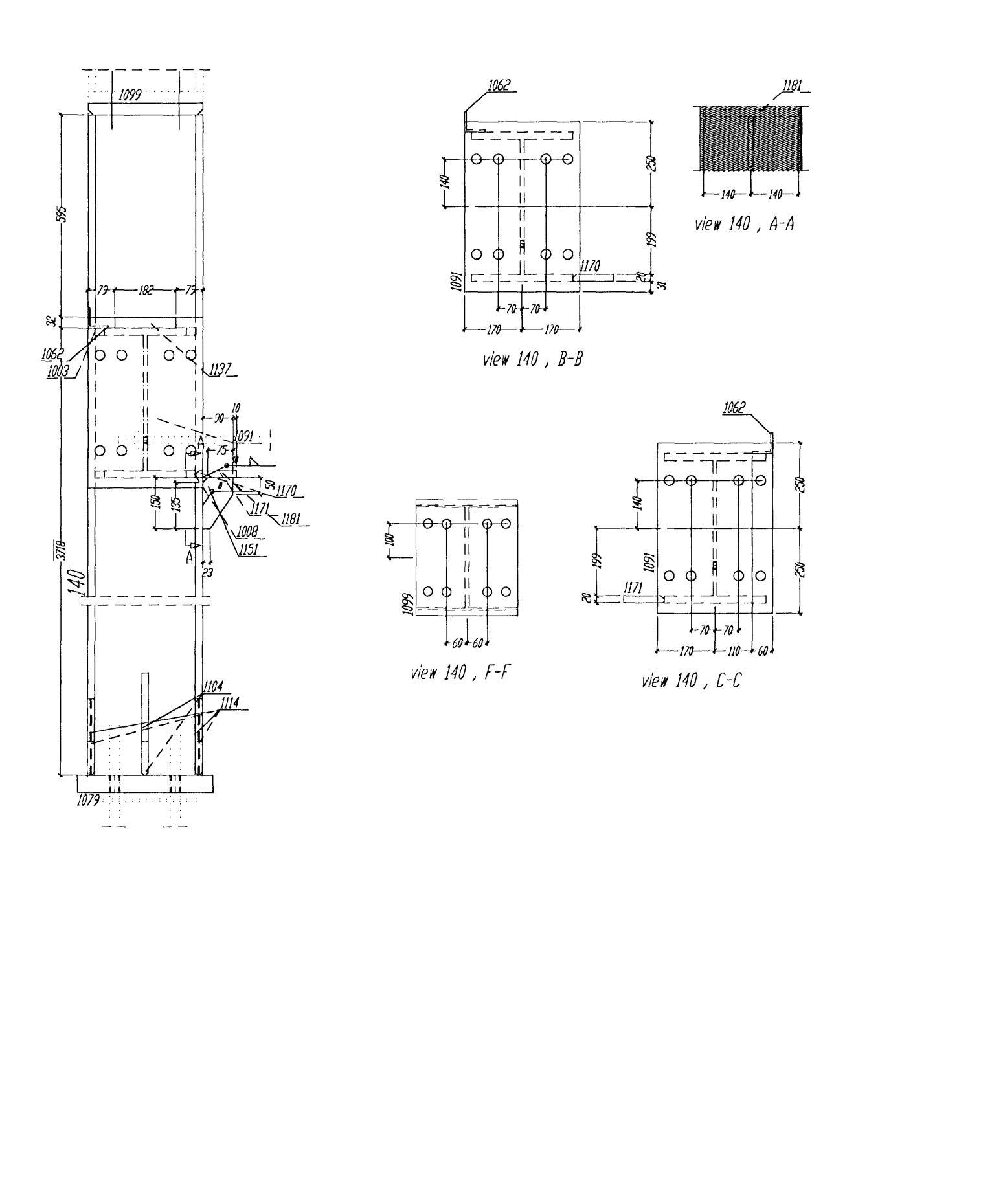
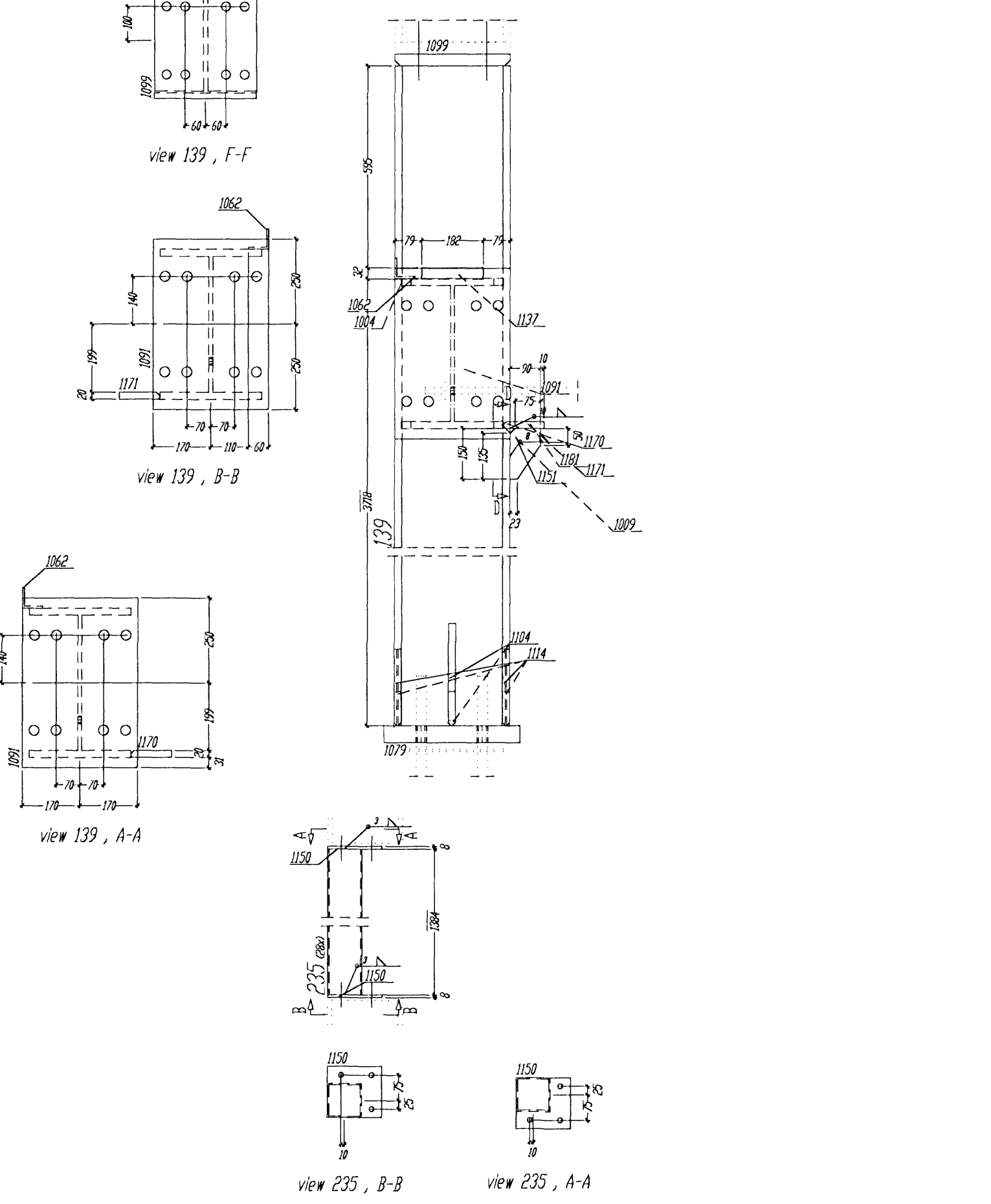
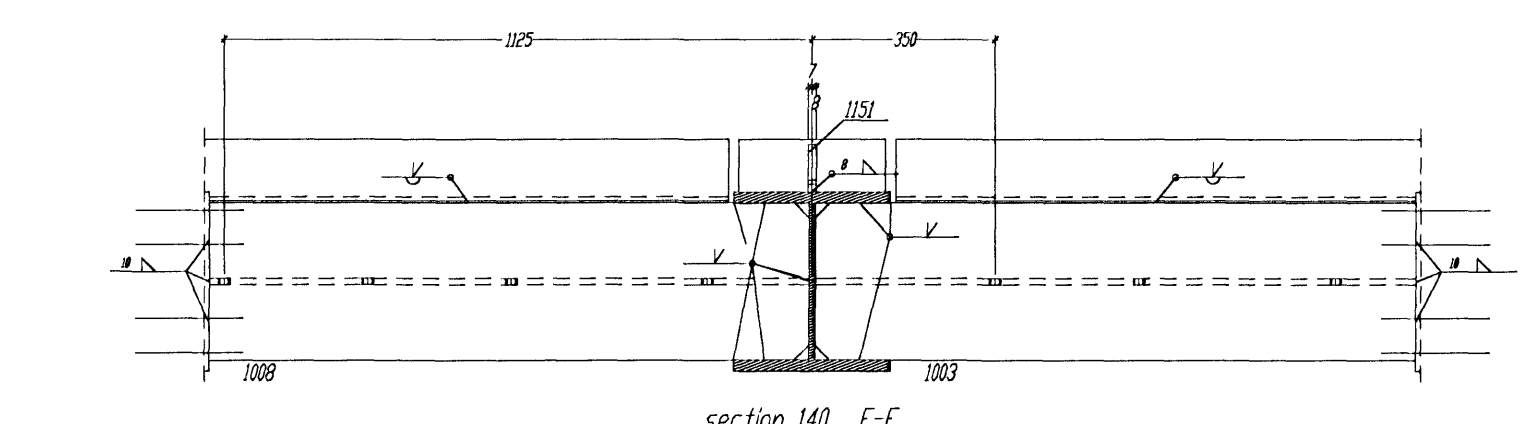
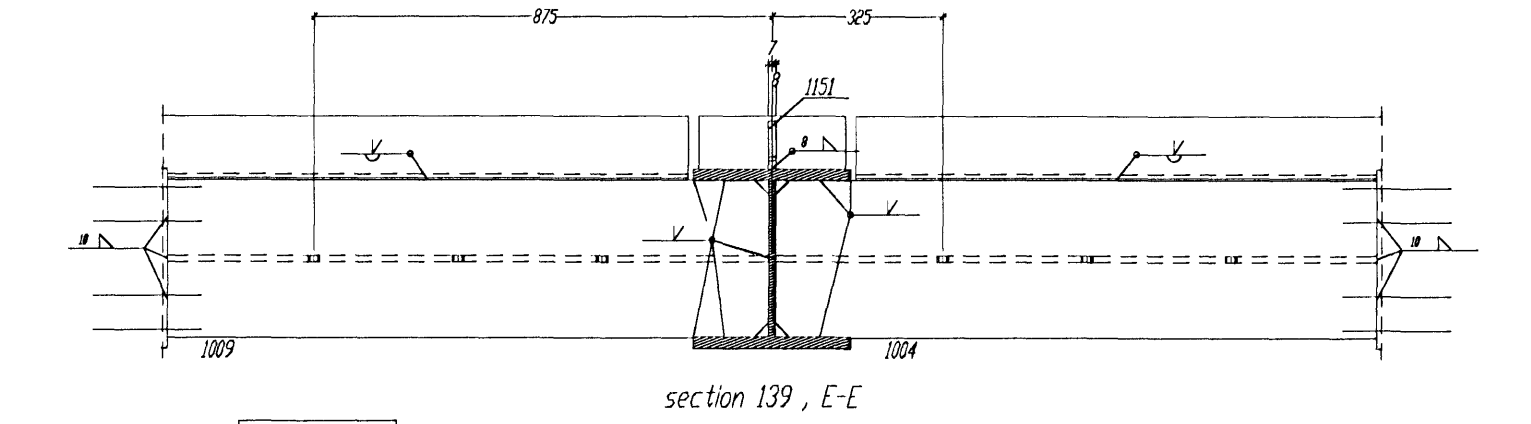
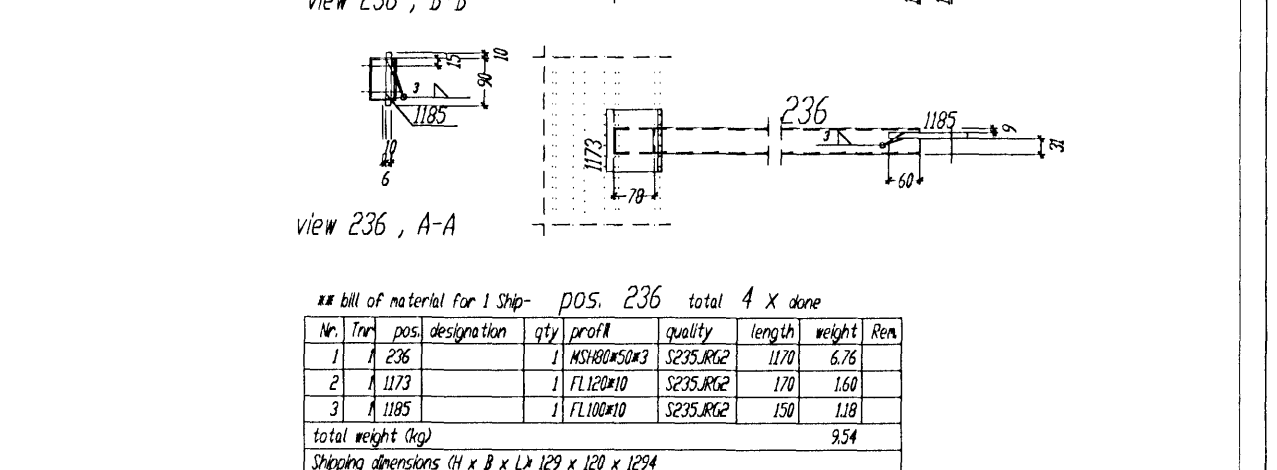
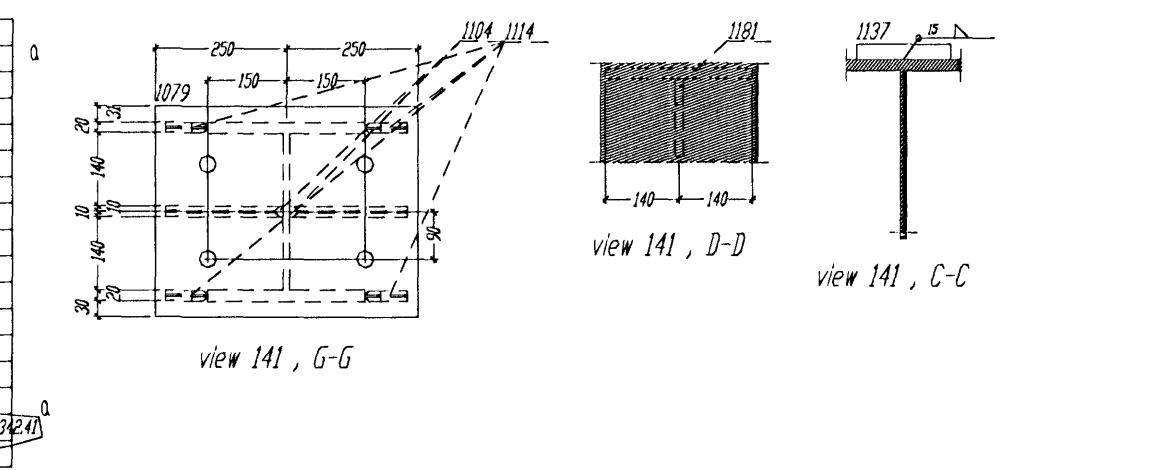
Shipping dimensions 01 x B x L x H 478 x 238 x 448



Bill of material for 1 Dip. POS. 141 total 1 X done

Nr	Part pos.	designation	qty	prof	quality	length	weight	dim	
1	A 141	TRONKUR	1	HEB30	SP25.033	4545	55483		
2	A 1007	TRONKUR	1	HEB30	SP25.033	1140	14072		
3	A 1007	TRONKUR	1	HEB30	SP25.033	1140	14072		
4	A 1062	TRONKUR	2	L606	SP25.032	1054	1108		
5	A 1019	TRONKUR	1	HEB30	SP25.033	500	7870		
6	A 1009	PLATE	2	HEB30	SP25.033	340	2011		
7	A 1009	PLATE	1	HEB30	SP25.033	340	2011		
8	A 1014	TRONKUR	2	HEB30	SP25.033	254	212		
9	A 1114	TRONKUR	4	HEB30	SP25.033	80	1130		
10	A 1117	TRONKUR	1	HEB30	SP25.033	1020	3887		
11	A 1118	TRONKUR	1	HEB30	SP25.033	30	159		
12	A 1119	TRONKUR	1	HEB30	SP25.033	1020	3887		
13	A 1121	TRONKUR	1	HEB30	SP25.033	1020	3887		
14	A 1181	TRONKUR	1	FL0800	SP25.033	280	440		
total weight Dip							28566	13424	

Shipping dimensions 01 x B x L x H 478 x 238 x 448



Bill of material for 1 Dip. POS. 236 total 4 X done

Nr	Part pos.	designation	qty	prof	quality	length	weight	dim	
1	A 236	TRONKUR	1	HEB30	SP25.032	1170	676		
2	A 1121	TRONKUR	1	HEB30	SP25.033	1020	3887		
3	A 1185	TRONKUR	1	FL0800	SP25.032	100	130		
total weight Dip							554		

Shipping dimensions 01 x B x L x H 129 x 129 x 129

Fyrir hönd Conis ehf, kt. 600105-1400
 staðfestist að teikning þessi hefur verið
 yfirfirin. Teikningin er í samræmi við
 íslenska staðla og reglugerðir. 28/10/07
 130557-41/05
 Kennitala

Tolerance for welded constructions
 According to DIN 8570, Pt.1+2/3/4/5/6/7
 Welding (WPS) according to
 DIN-EN 288 - 2

All unmarked welds to be fillet
 continuous a-fan thick,
 not greater than 0.7 d
 of the thinner element

The material for cap plates 20 mm thick
 to be examined for laminations

Required torque-stressing forces and forced
 tension angles according to DIN 18800 Pt. 7, 03/93

Weld	Welding process	Welding position	Welding speed		Welding temperature		Welding time		Welding force		Welding angle	
			mm/min	cm/min	°C	°C	min	h	N	kg	°	°
1	1	1	1	1	1	1	1	1	1	1	1	1
2	2	2	2	2	2	2	2	2	2	2	2	2
3	3	3	3	3	3	3	3	3	3	3	3	3
4	4	4	4	4	4	4	4	4	4	4	4	4
5	5	5	5	5	5	5	5	5	5	5	5	5
6	6	6	6	6	6	6	6	6	6	6	6	6
7	7	7	7	7	7	7	7	7	7	7	7	7
8	8	8	8	8	8	8	8	8	8	8	8	8
9	9	9	9	9	9	9	9	9	9	9	9	9
10	10	10	10	10	10	10	10	10	10	10	10	10
11	11	11	11	11	11	11	11	11	11	11	11	11
12	12	12	12	12	12	12	12	12	12	12	12	12
13	13	13	13	13	13	13	13	13	13	13	13	13
14	14	14	14	14	14	14	14	14	14	14	14	14
15	15	15	15	15	15	15	15	15	15	15	15	15
16	16	16	16	16	16	16	16	16	16	16	16	16
17	17	17	17	17	17	17	17	17	17	17	17	17
18	18	18	18	18	18	18	18	18	18	18	18	18
19	19	19	19	19	19	19	19	19	19	19	19	19
20	20	20	20	20	20	20	20	20	20	20	20	20

BIURO INZYNIERSKIE
 Marek i Janina MUCHA
 Osiny, ul. Opolska 30a, 46-070 Komprachcice tel.077-46 46 757

DATE	NAME	SIGNATURE	DWG SCALE
23.02	Marta		

Pos. 139-141,235-237
 TJARNARVELLIR 11
 Steel Office part
 DRG 114 a