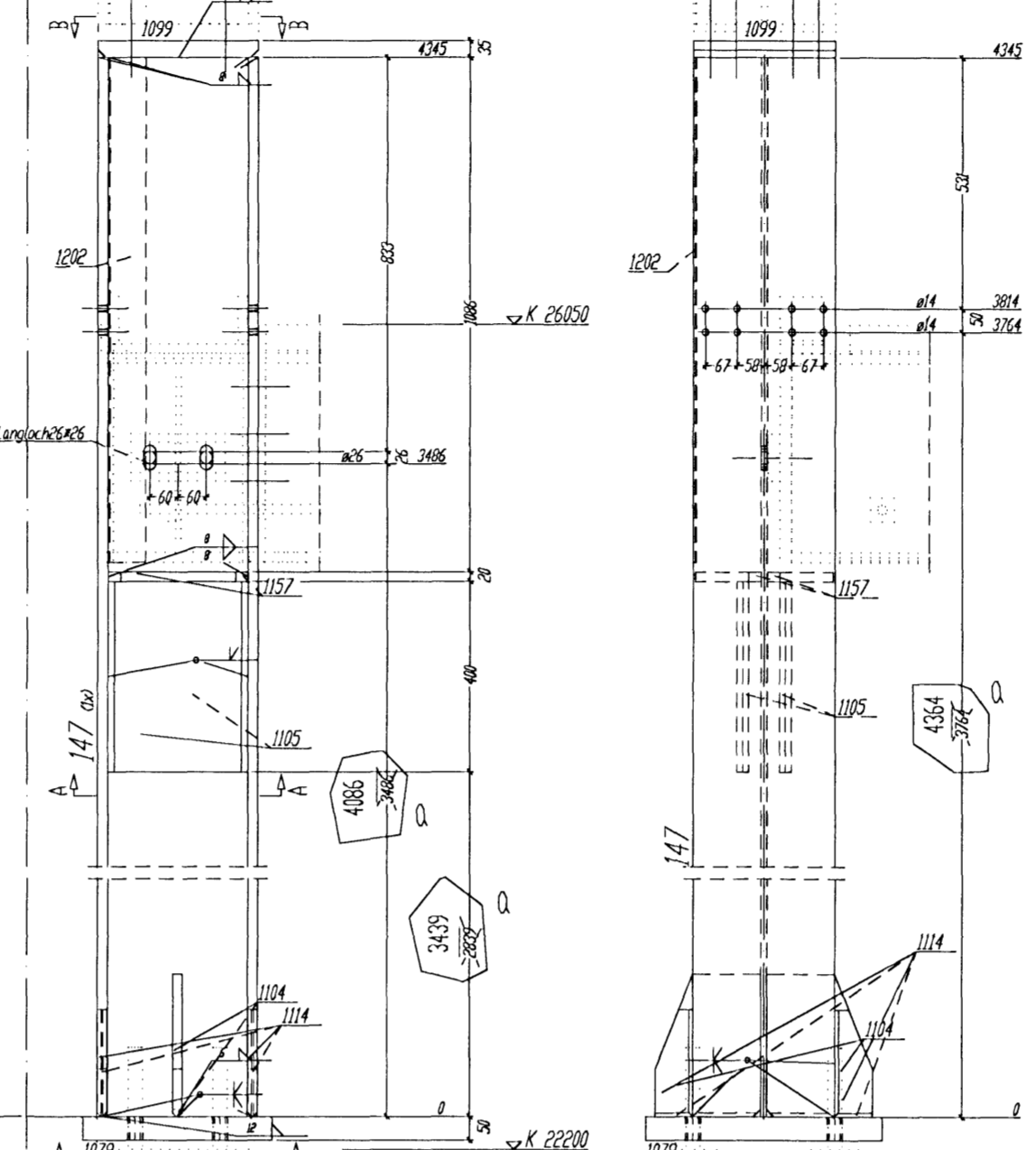
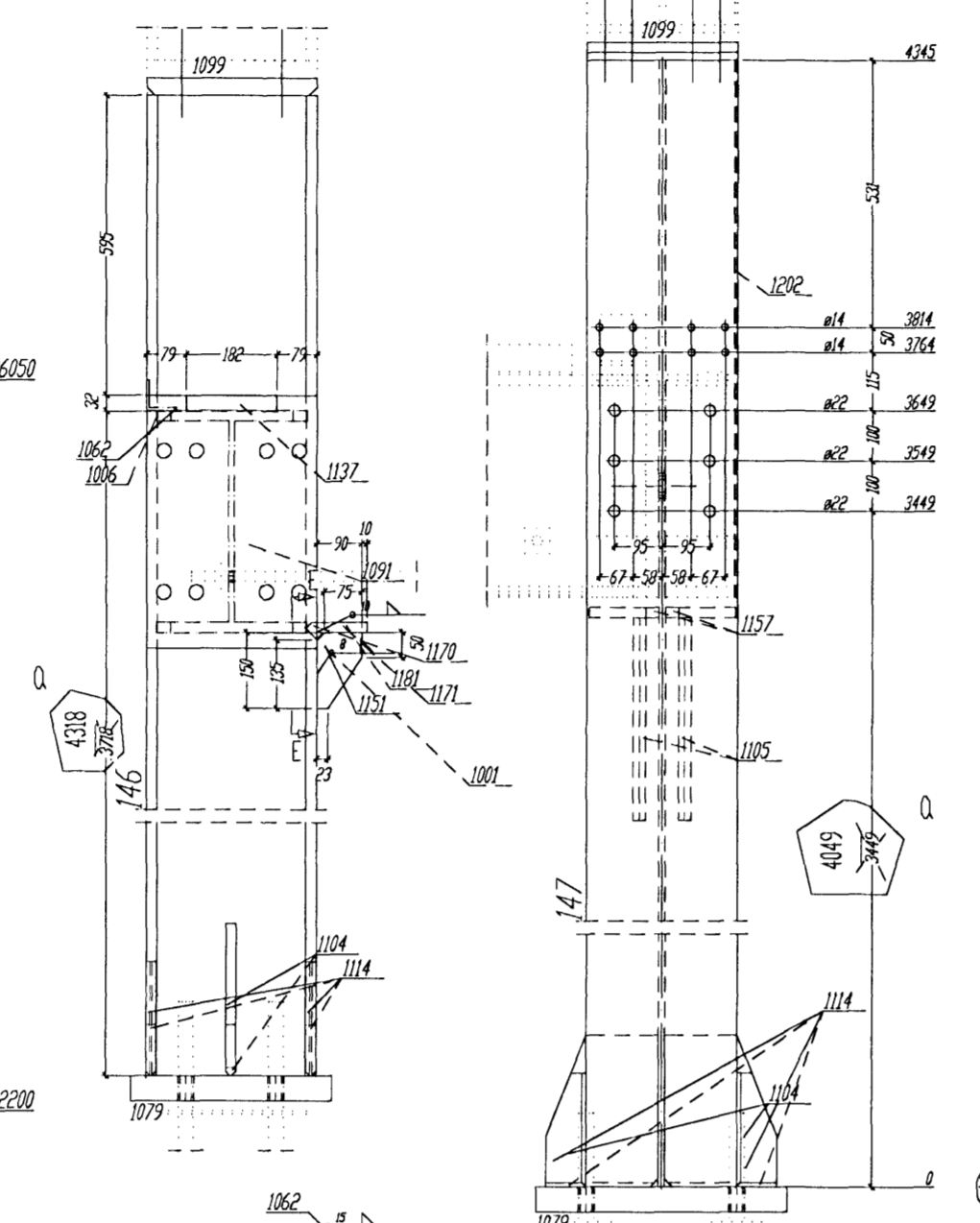
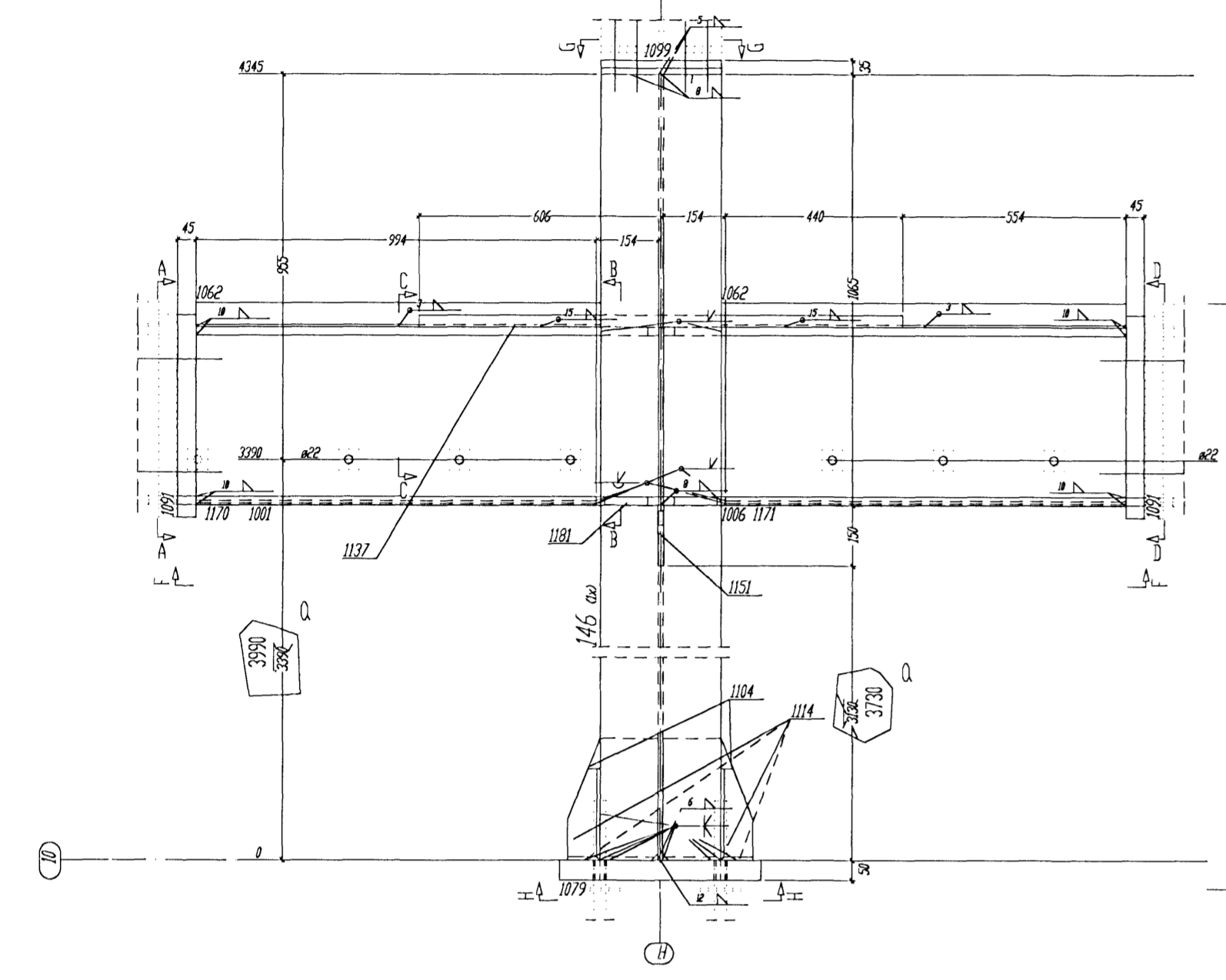
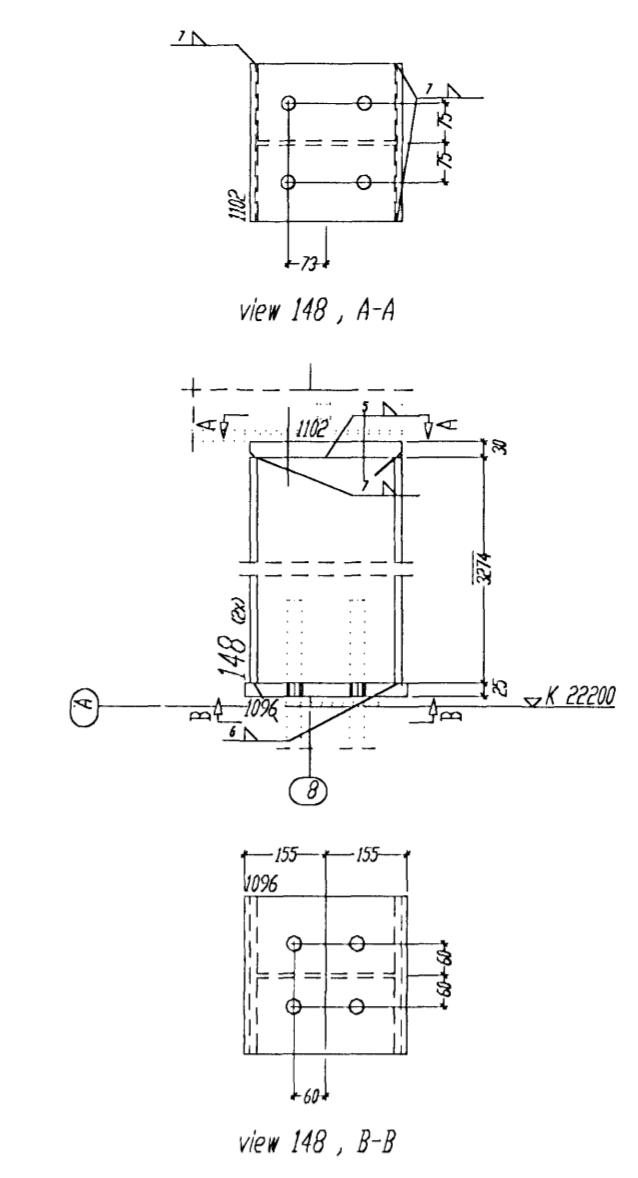
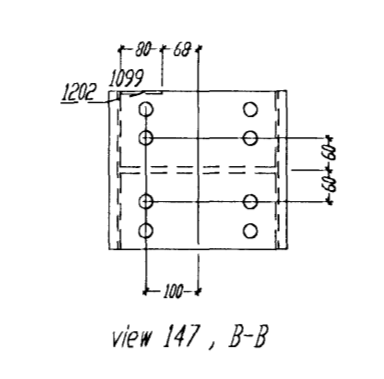
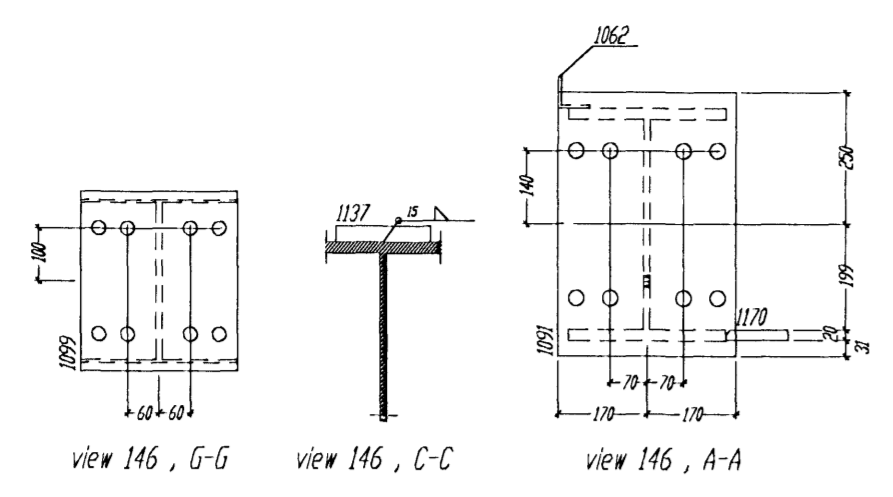


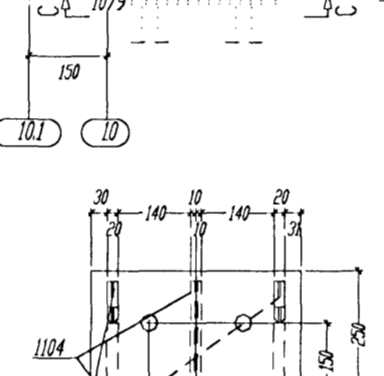
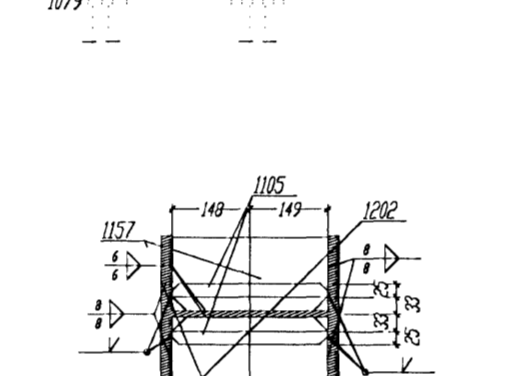
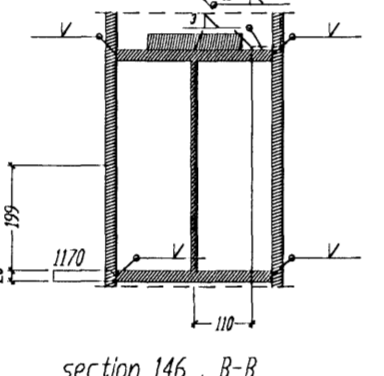
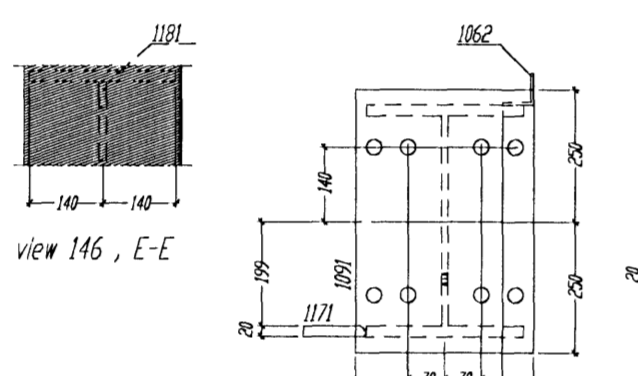
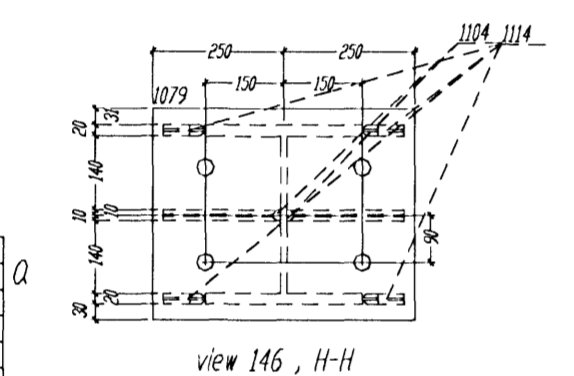
Drögningsábyrgðin er á höfud höndunum
16 FEB 2008
118



of material for 1 Dip: POS. 148 total 2 X done

| Nr | Pos | designation | qty | profil | quality | length | weight | dim |
|------------------|-------|-------------|-----|--------|---------|--------|--------|-----|
| 1 | A.148 | TRONKEL | 1 | HE400 | S235JR2 | 304 | 28000 | |
| 2 | A.148 | TRONKEL | 1 | HE400 | S235JR2 | 304 | 28000 | |
| 3 | A.148 | TRONKEL | 1 | HE400 | S235JR2 | 304 | 28000 | |
| total weight Dip | | | | | | | 84000 | |

Shipping dimensions 01 x B x L3 300 x 200 x 2200



of material for 1 Dip: POS. 147 total 1 X done

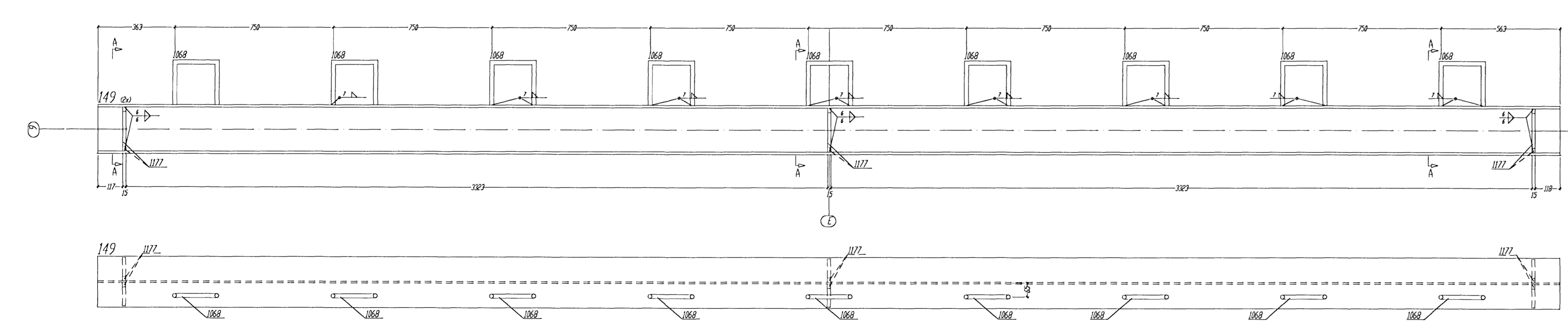
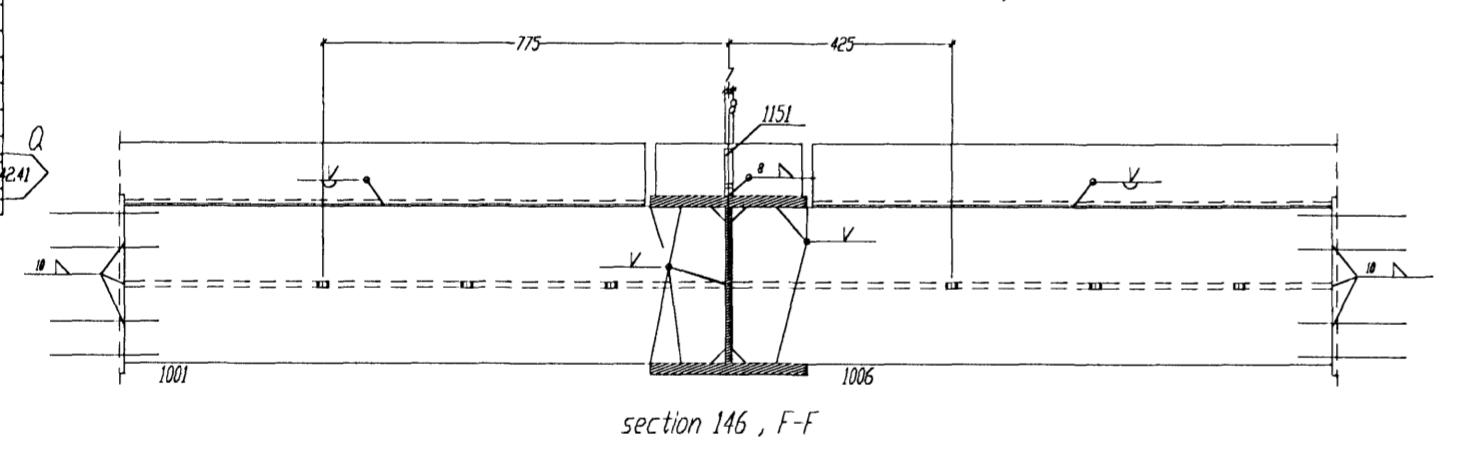
| Nr | Pos | designation | qty | profil | quality | length | weight | dim |
|------------------|-------|-------------|-----|--------|---------|--------|--------|-------|
| 1 | A.147 | TRONKEL | 1 | HE400 | S235JR2 | 2495 | 24000 | |
| 2 | A.147 | TRONKEL | 1 | HE400 | S235JR2 | 300 | 28000 | |
| 3 | A.147 | PLATE | 2 | BL2500 | S235JR2 | 340 | 28000 | |
| 4 | A.147 | TRONKEL | 2 | BL2500 | S235JR2 | 224 | 212 | |
| 5 | A.147 | TRONKEL | 2 | BL2500 | S235JR2 | 400 | 4650 | |
| 6 | A.147 | TRONKEL | 4 | BL2500 | S235JR2 | 80 | 1100 | |
| 7 | A.147 | ROFPE | 2 | BL2500 | S235JR2 | 290 | 1306 | |
| 8 | A.147 | TRONKEL | 1 | BL2500 | S235JR2 | 1066 | 400 | |
| total weight Dip | | | | | | | 78500 | 89000 |

Shipping dimensions 01 x B x L3 400 x 500 x 4400

of material for 1 Dip: POS. 146 total 1 X done

| Nr | Pos | designation | qty | profil | quality | length | weight | dim |
|------------------|-------|-------------|-----|--------|---------|--------|--------|--------|
| 1 | A.146 | TRONKEL | 1 | HE400 | S235JR2 | 4245 | 42400 | |
| 2 | A.146 | TRONKEL | 1 | HE400 | S235JR2 | 140 | 16000 | |
| 3 | A.146 | TRONKEL | 1 | HE400 | S235JR2 | 140 | 16000 | |
| 4 | A.146 | TRONKEL | 2 | BL2500 | S235JR2 | 104 | 1000 | |
| 5 | A.146 | TRONKEL | 2 | BL2500 | S235JR2 | 300 | 3000 | |
| 6 | A.146 | PLATE | 2 | BL2500 | S235JR2 | 300 | 3000 | |
| 7 | A.146 | PLATE | 1 | BL2500 | S235JR2 | 340 | 28000 | |
| 8 | A.146 | TRONKEL | 4 | BL2500 | S235JR2 | 224 | 212 | |
| 9 | A.146 | TRONKEL | 4 | BL2500 | S235JR2 | 80 | 1100 | |
| 10 | A.146 | TRONKEL | 1 | BL2500 | S235JR2 | 200 | 5000 | |
| 11 | A.146 | TRONKEL | 1 | BL2500 | S235JR2 | 80 | 1100 | |
| 12 | A.146 | TRONKEL | 1 | BL2500 | S235JR2 | 1000 | 10000 | |
| 13 | A.146 | TRONKEL | 1 | BL2500 | S235JR2 | 1000 | 10000 | |
| 14 | A.146 | TRONKEL | 1 | BL2500 | S235JR2 | 200 | 400 | |
| total weight Dip | | | | | | | 136000 | 136000 |

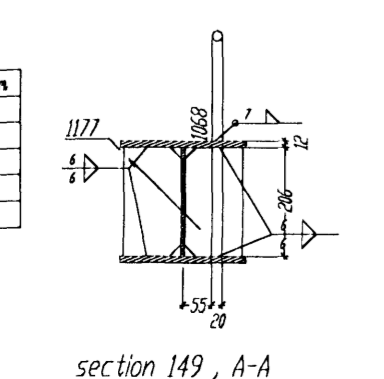
Shipping dimensions 01 x B x L3 400 x 200 x 4400



of material for 1 Dip: POS. 149 total 2 X done

| Nr | Pos | designation | qty | profil | quality | length | weight | dim |
|------------------|-------|-------------|-----|--------|---------|--------|--------|-----|
| 1 | A.149 | TRONKEL | 1 | HE400 | S235JR2 | 688 | 6720 | |
| 2 | A.149 | TRONKEL | 9 | HE400 | S235JR2 | 600 | 1330 | |
| 3 | A.149 | ROFPE | 6 | BL2500 | S235JR2 | 200 | 1800 | |
| total weight Dip | | | | | | | 4400 | |

Shipping dimensions 01 x B x L3 400 x 200 x 688



Fyrir hönd Conis ehf, kt. 600105-1400
staðfestist að teikning þessi hefur verið
yfirlit. Teikningin er í samræmi við
Íslenska staðla og reglugerðir. 28/107

Conis
Nafn 130657-4413
Kennitala

Tolerance for welded constructions according to DIN 8570, Pt.1-3/BV.1087
Welding (W.P.S.) according to DIN EN 288 - 2

Required transverse forces and forced tension angles according to DIN 18800 Pt. 1, 0583

| Material | Welding | Preparation of V-butt joints | | Preparation of V-butt joints | | C | D | E | F | G | H | I | J | K | L | M | N | O | P | Q | R | S | T | U | V | W | X | Y | Z | | |
|----------|---------|------------------------------|---|------------------------------|---|---|---|---|---|---|----|----|----|----|----|----|----|----|----|----|----|----|----|----|----|----|----|----|----|----|----|
| | | 1 | 2 | 3 | 4 | | | | | | | | | | | | | | | | | | | | | | | | | | |
| St 37 | St 37 | 1 | 2 | 3 | 4 | 5 | 6 | 7 | 8 | 9 | 10 | 11 | 12 | 13 | 14 | 15 | 16 | 17 | 18 | 19 | 20 | 21 | 22 | 23 | 24 | 25 | 26 | 27 | 28 | 29 | 30 |

All unworked welds to be fillet continuous a=4mm thick, not greater than 0.7 d of the thinner element

The material for cap plates 20 mm thick to be examined for laminations

BIURO INZYNIERSKIE
Marek i Janina MUCHA
Osiny, ul. Opalska 30a, 46-070 Komprachcice tel.077-46 46 757

Pos. 146-149
T.JARNARVELLIR 11
Steel Office part
DRG 116 a