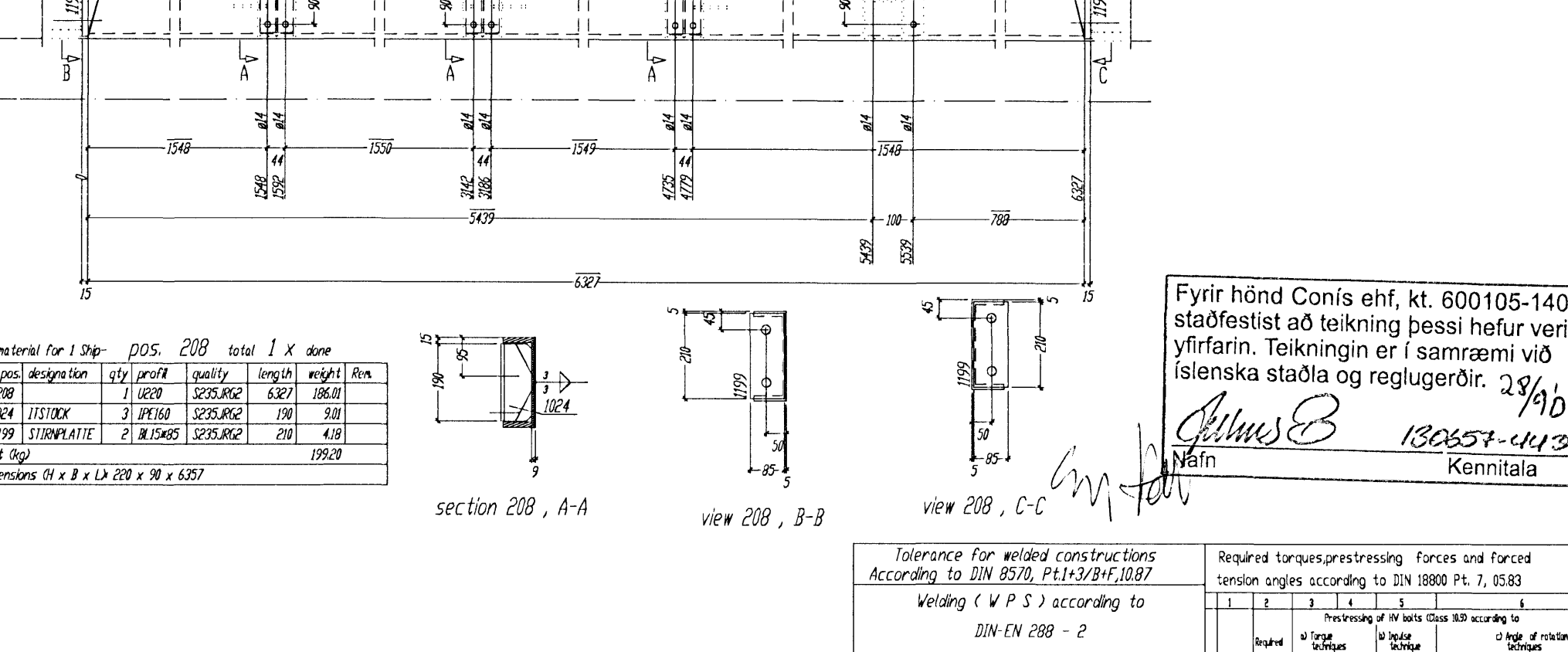
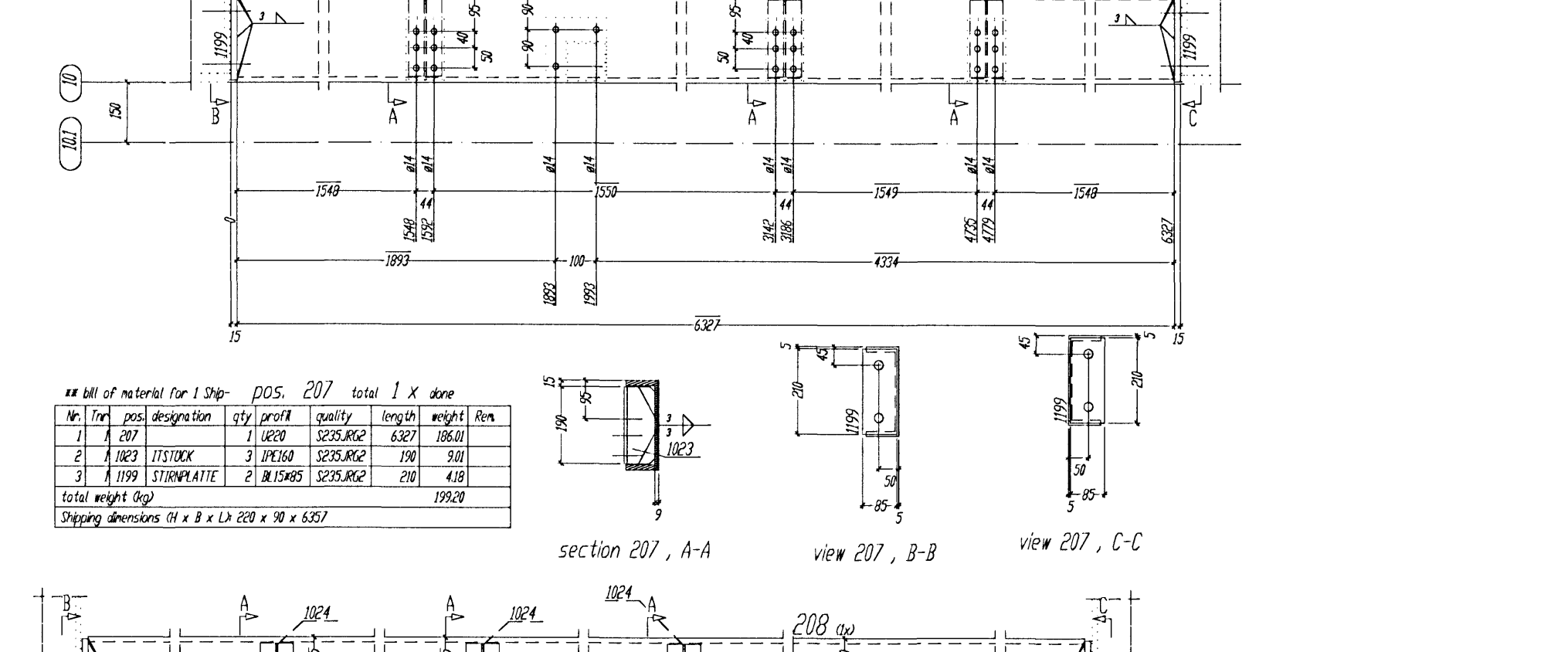
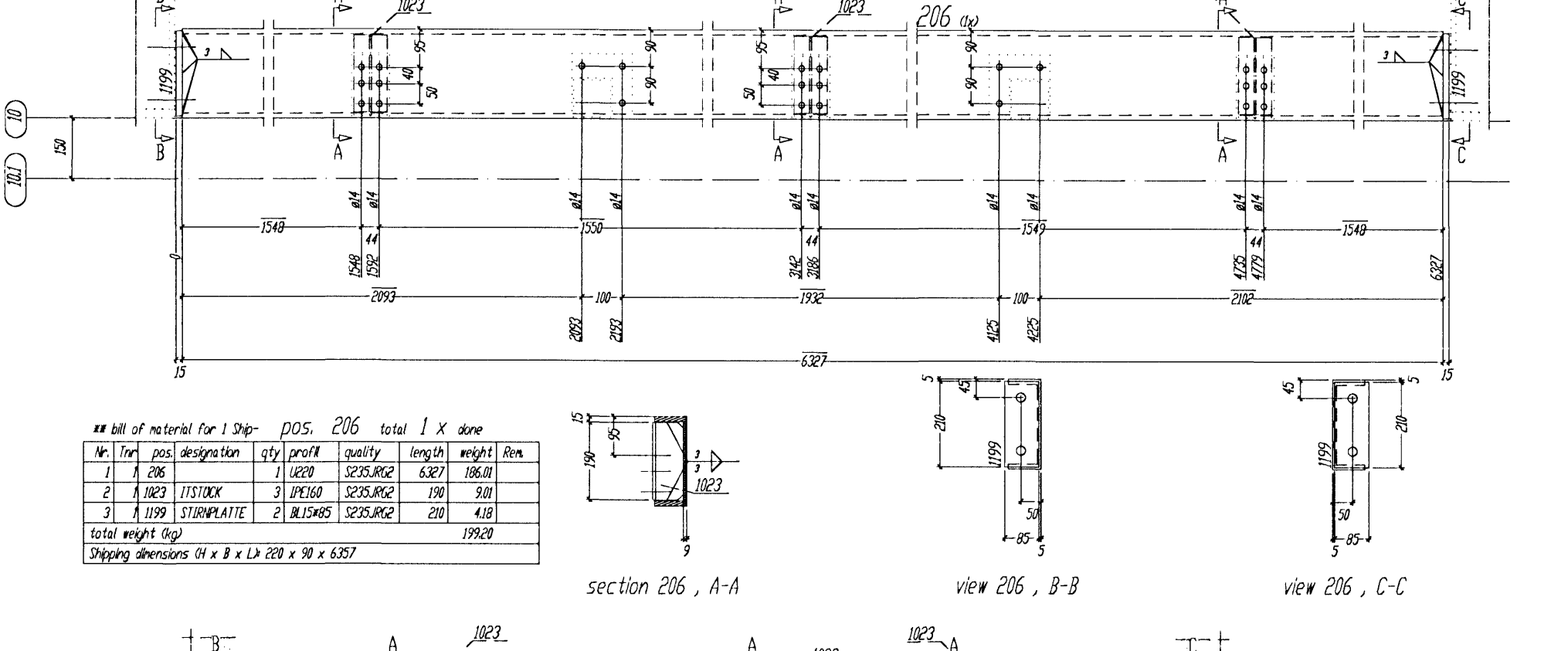
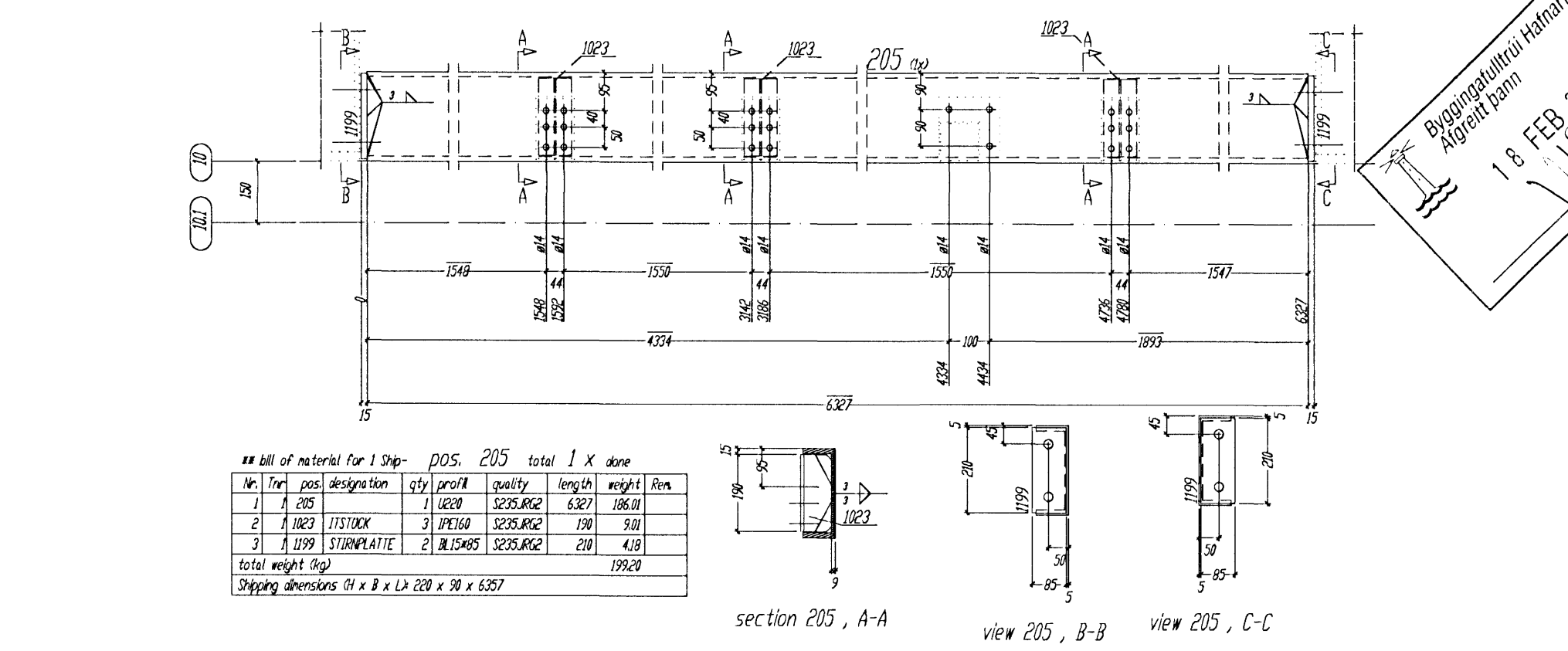
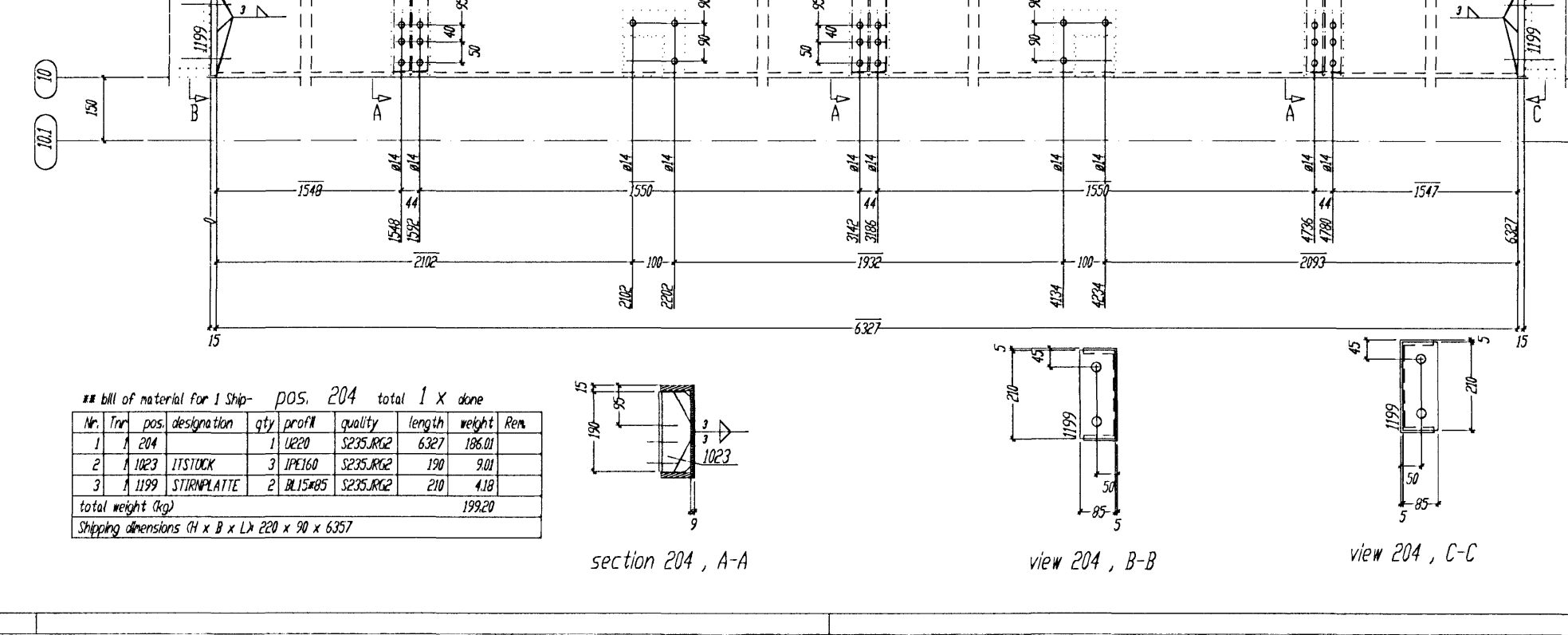
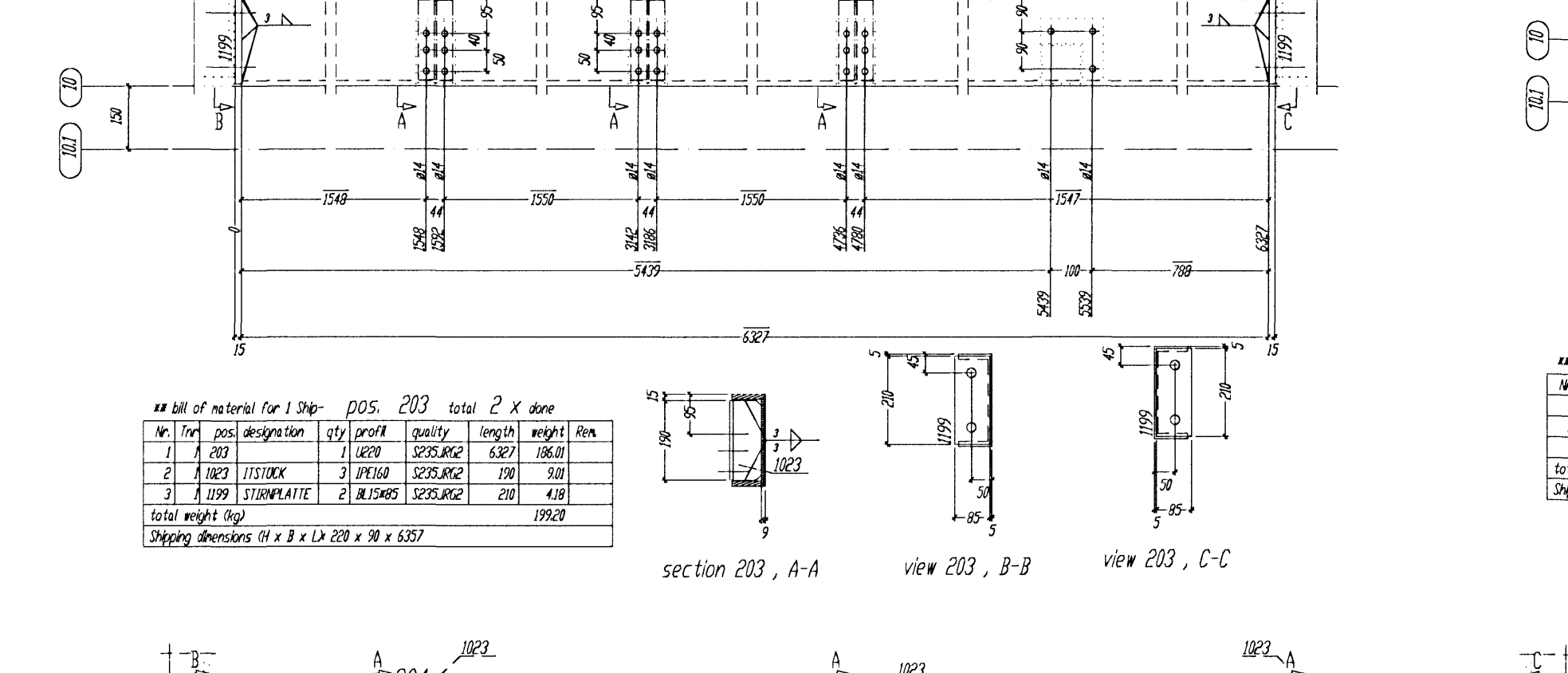
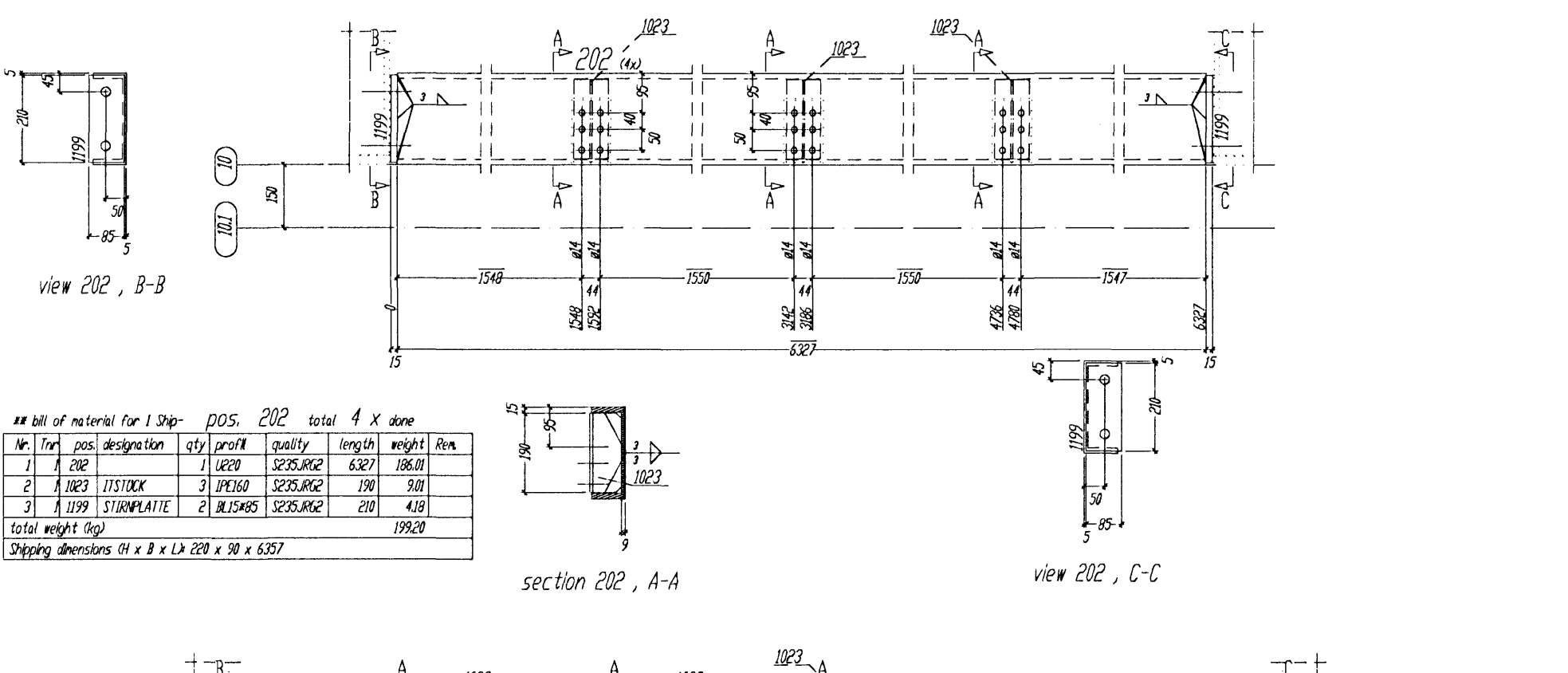
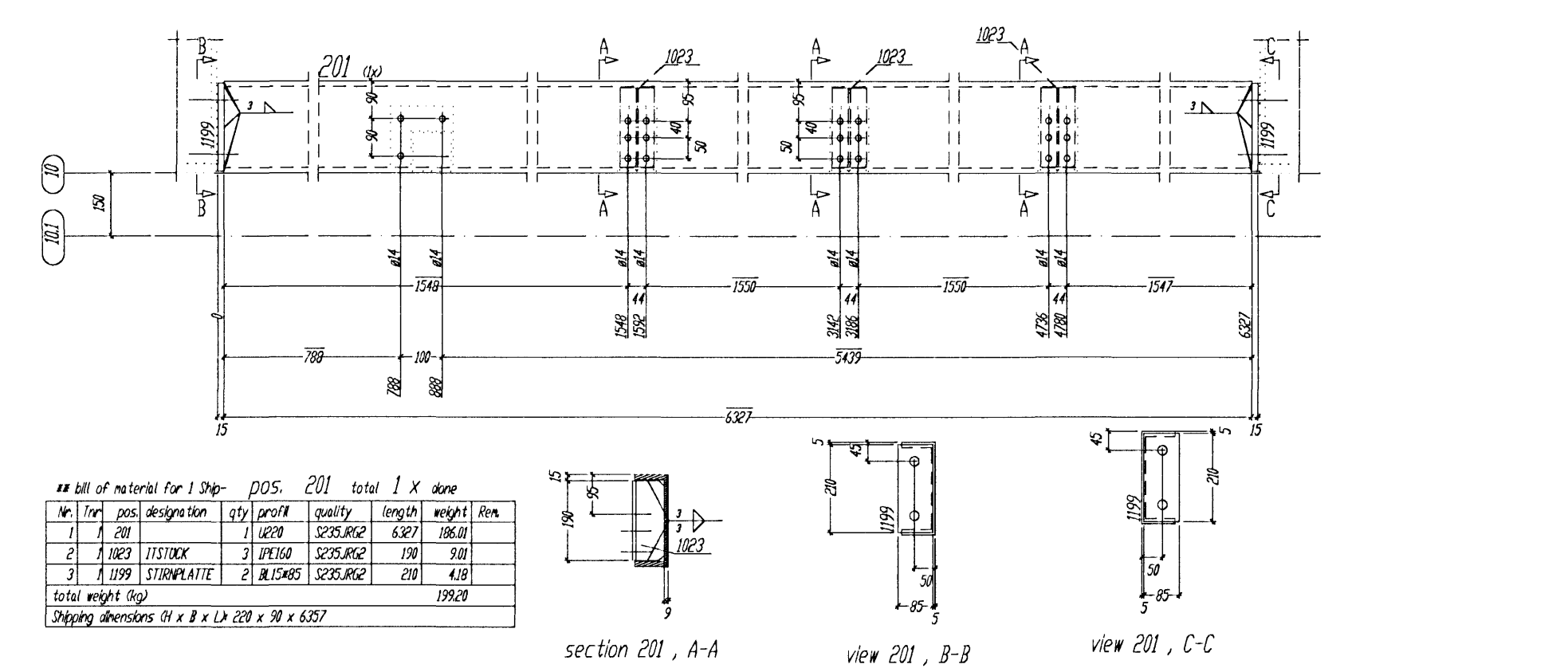
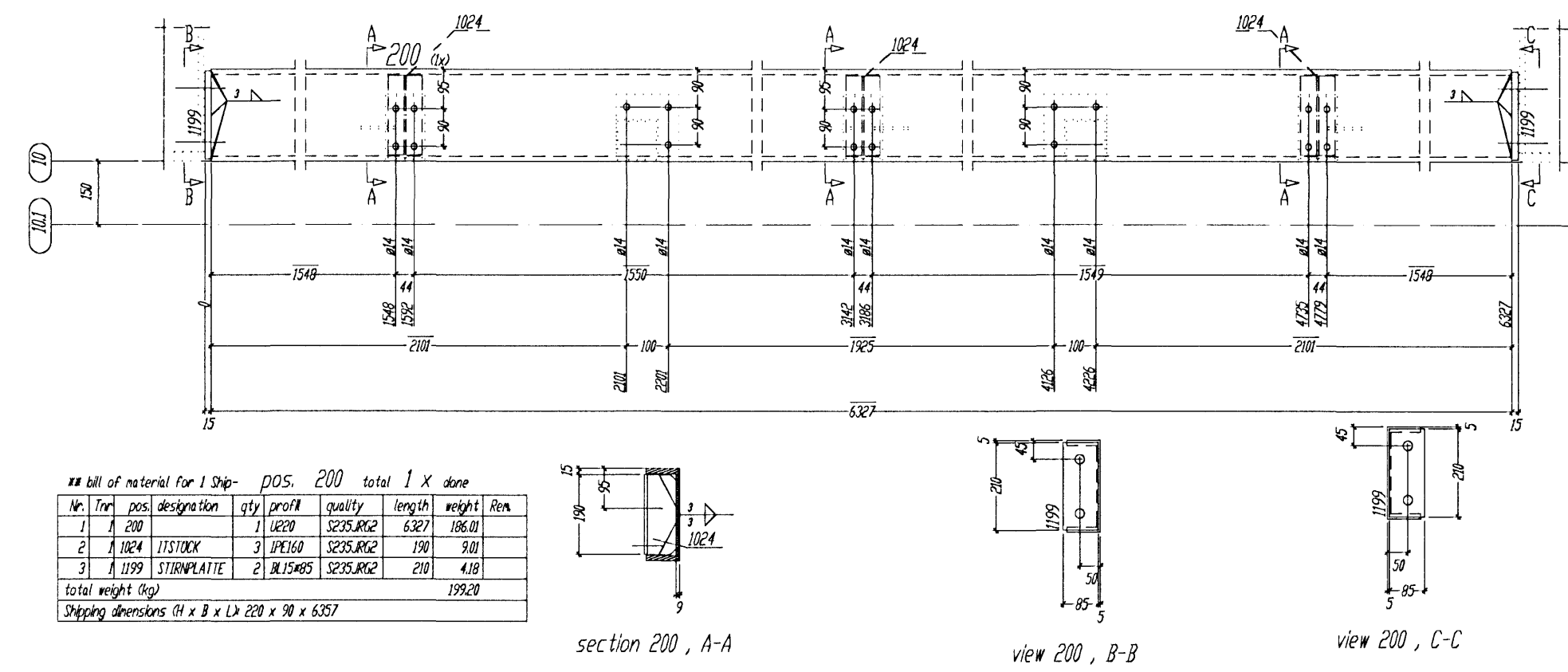
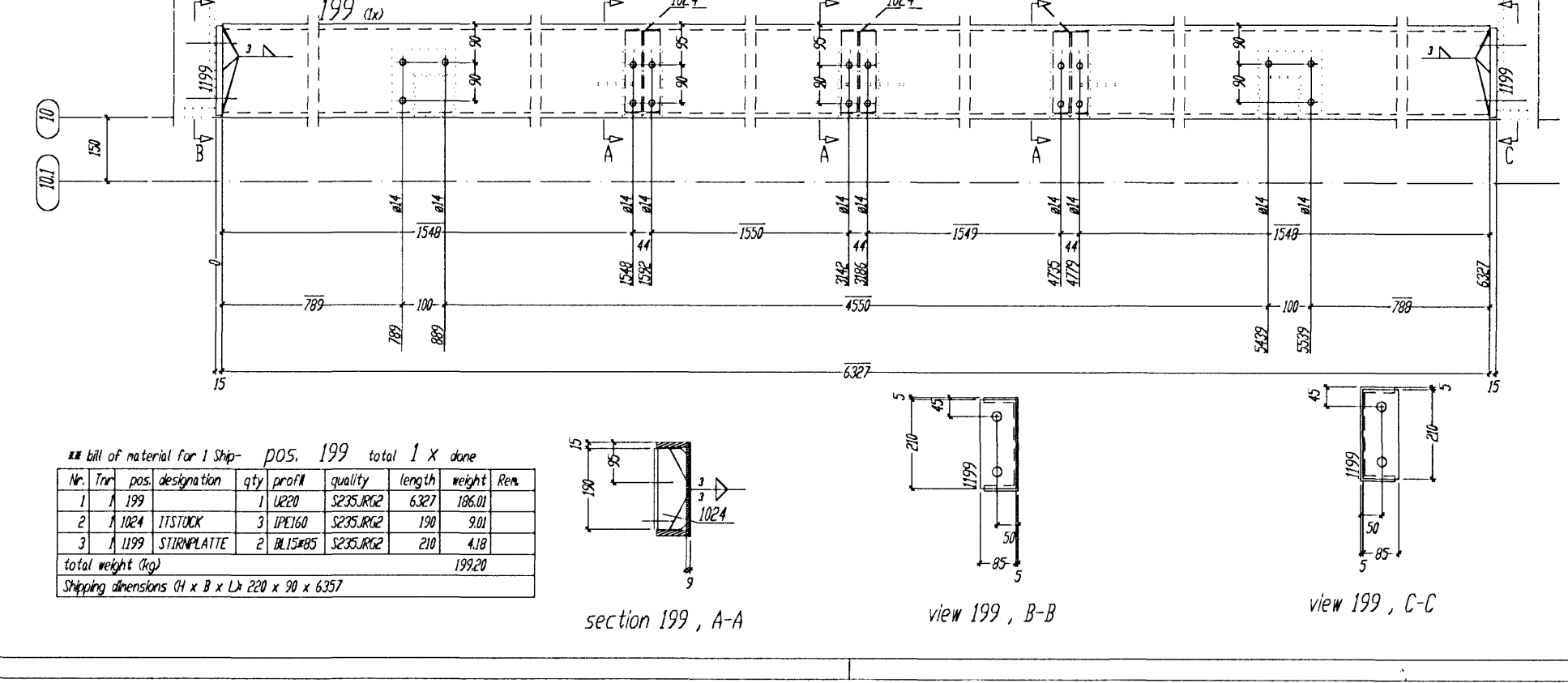
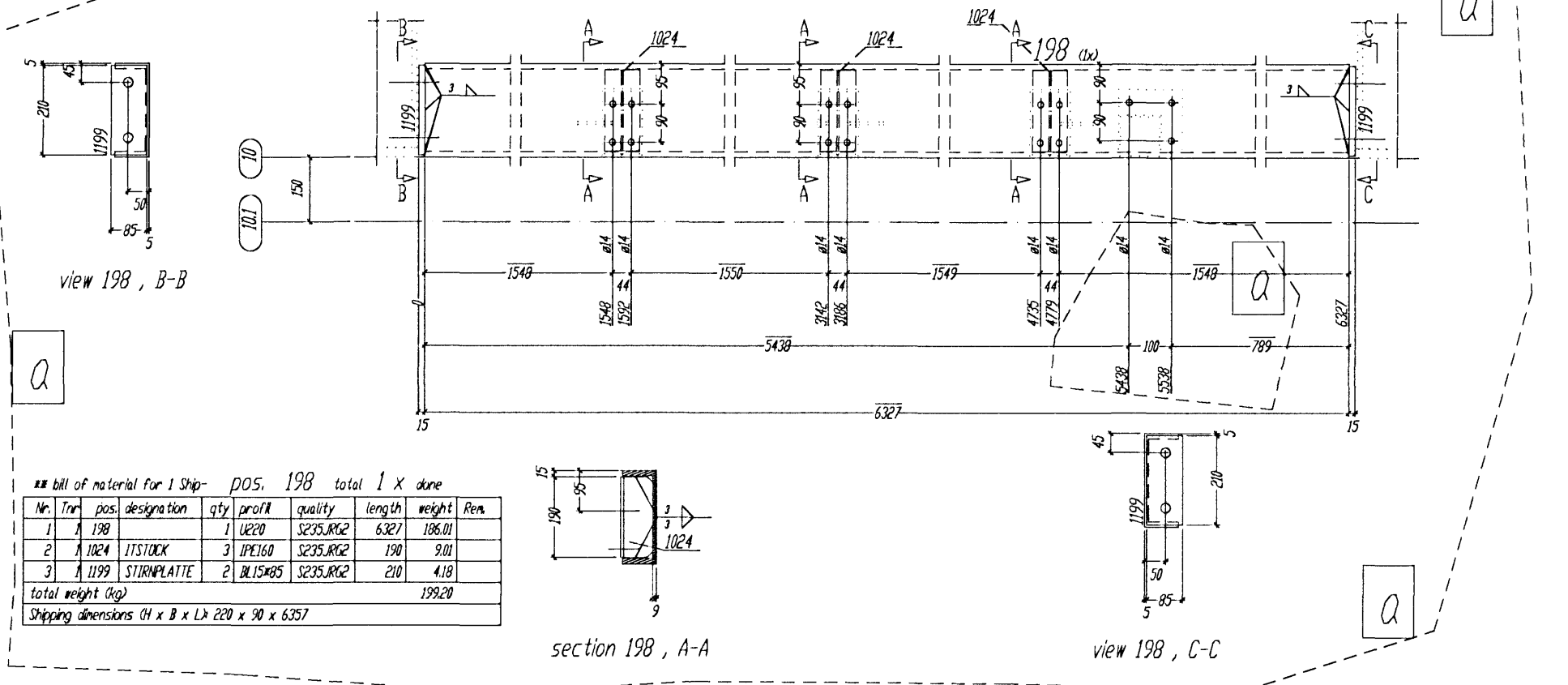
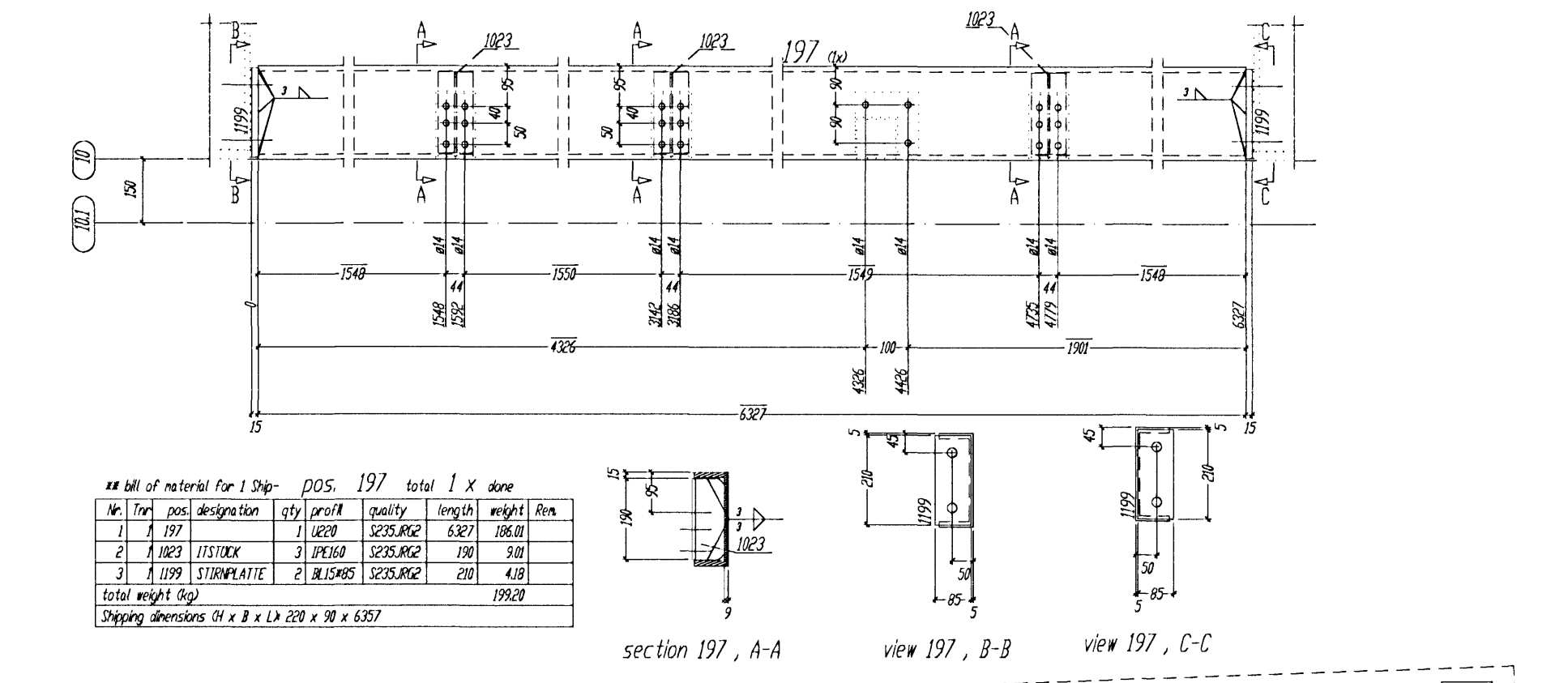
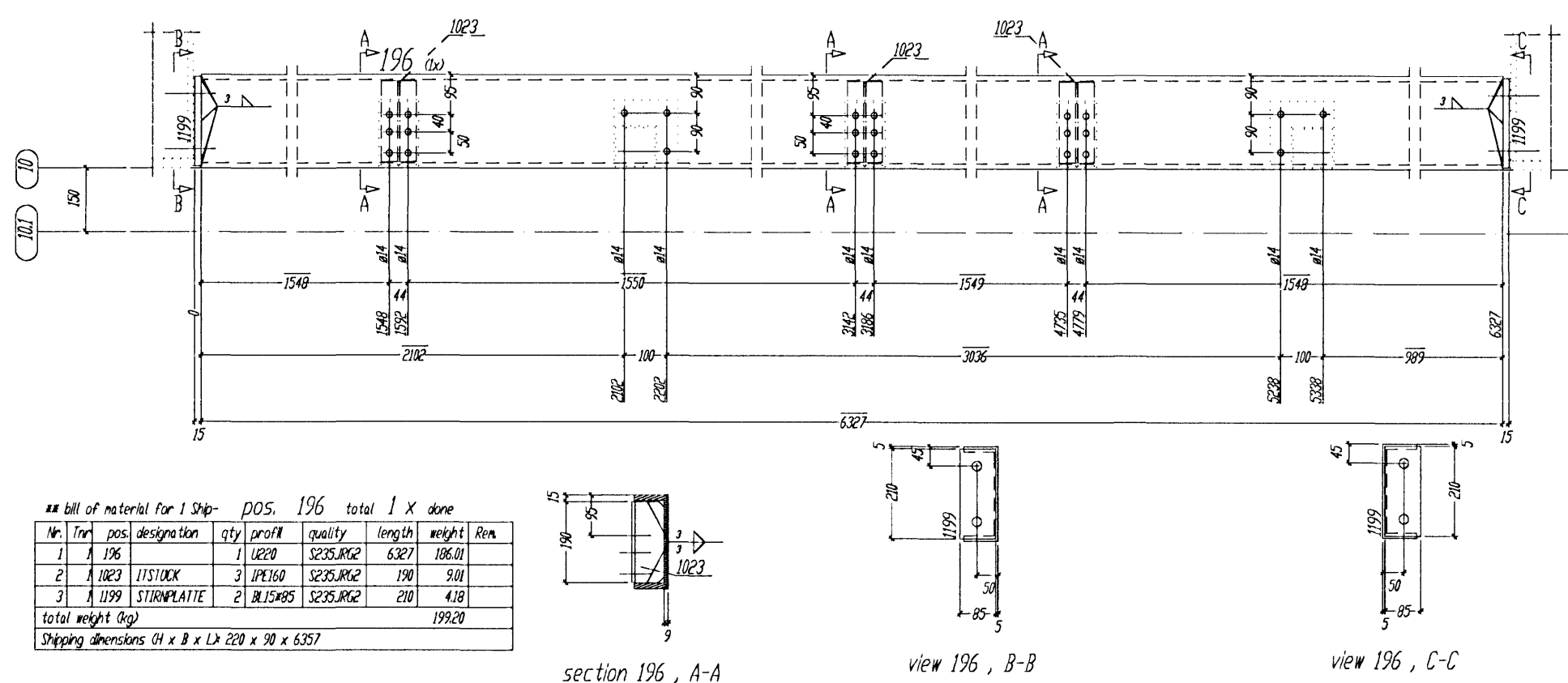
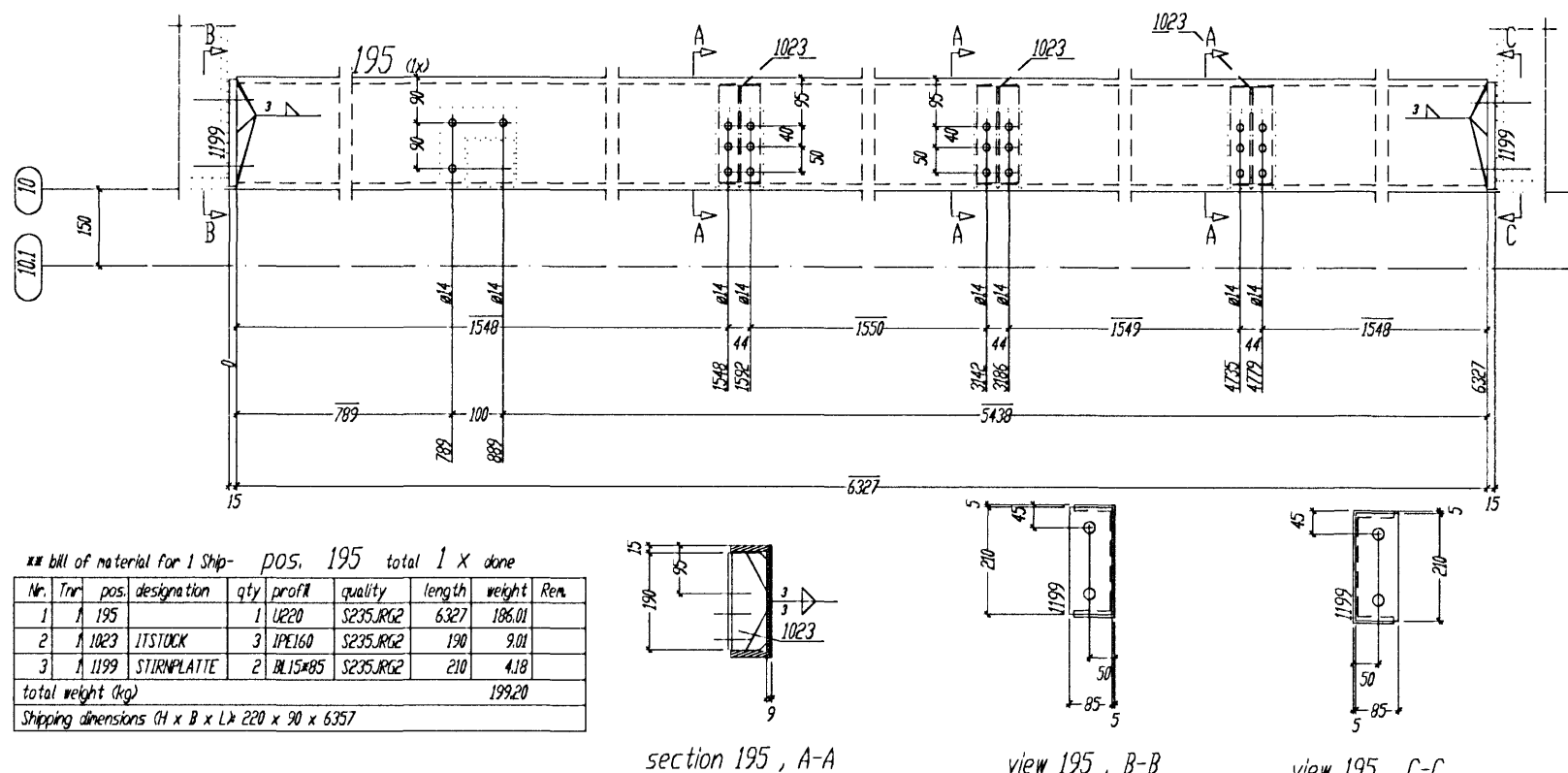


Byggingarritunir Pálmar Pálsson
18 FEB 2008



Fyrir hönd Conis ehf. kt. 600105-1400 staðfestist að teikning þessi hefur verið yfirfarin. Teikningin er í samræmi við íslenska stöðla og reglugerðir. 29/10/07
 Jónas B. 130657-44347 Kennitala

Tolerance for welded constructions According to DIN 9135, Pt.1+2+3+4+5+6+7

Welding (W.P.S.) according to DIN EN 288 - 2

All unmarked welds to be fillet continuous, s.c.w. thick, not greater than 0.7 a of the thinner element

The material for cap plates 20 mm thick to be examined for laminations

Required torque-stressing forces and forced tension angles according to DIN 18800 Pt.7, 8+8.3

Weld	Welding	Welding	Welding	Welding	Welding	Welding	Welding	Welding	Welding	Welding
1	1	2	3	4	5	6	7	8	9	10

BIURO INZYNIERSKIE Marek i Janina MUCHA
 Bszyn, ul. Epolska 30a, 46-070 Konopnice tel.077-46 46 757

DATE NAME SIGNATURE

Pos. 195-208
 T JARNARVELLIR 11
 Steel Office part
 DRG 124 a