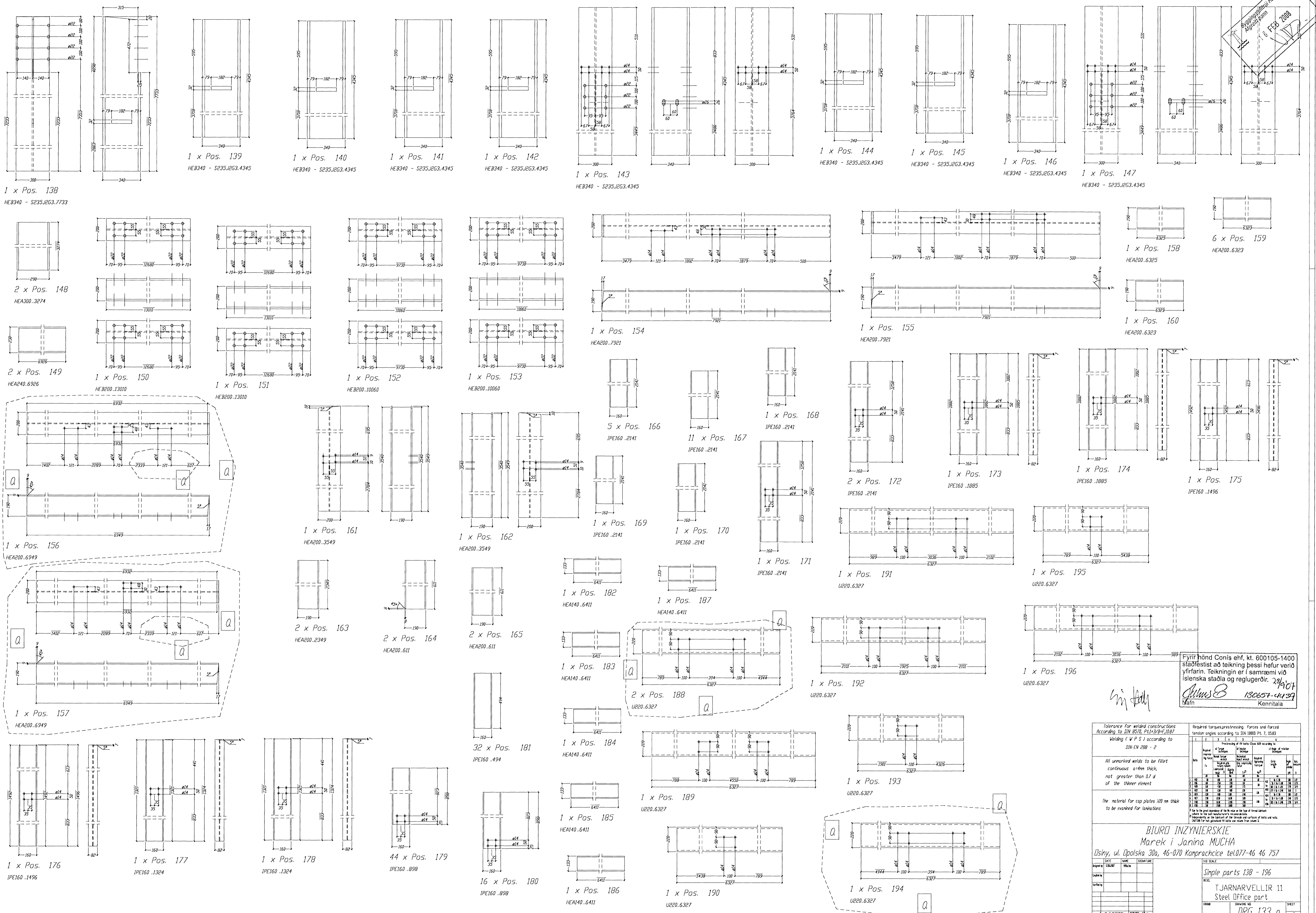


BYGGINNANNAU
HIGNIÞ PÓLUN
18. FEB 2008



Fyrir hönd Conis ehf, kt. 600105-1400
staðfestist að teikning þessi hefur verið
yfirlit. Teikningin er í samræmi við
íslenska staðla og reglugerðir. 28/10/07
Mafn *[Signature]* 130657-41137
Kennitala

Tolerance for welded constructions According to DIN 9130, Pt1+3/3/1,1087		Required tensioning forces and forced tension angles according to DIN 18800 Pt. 7, 05/83																																	
Welding (VPS) according to DIN EN 228 - 2		<table border="1"> <thead> <tr> <th colspan="4">Preparation of the weld metal</th> <th colspan="4">Type of metal</th> </tr> <tr> <th>Weld</th> <th>Weld metal</th> <th>Weld metal</th> <th>Weld metal</th> <th>Weld metal</th> <th>Weld metal</th> <th>Weld metal</th> <th>Weld metal</th> </tr> </thead> <tbody> <tr> <td>1</td> <td>2</td> <td>3</td> <td>4</td> <td>5</td> <td>6</td> <td>7</td> <td>8</td> </tr> <tr> <td>1</td> <td>2</td> <td>3</td> <td>4</td> <td>5</td> <td>6</td> <td>7</td> <td>8</td> </tr> </tbody> </table>		Preparation of the weld metal				Type of metal				Weld	Weld metal	Weld metal	Weld metal	Weld metal	Weld metal	Weld metal	Weld metal	1	2	3	4	5	6	7	8	1	2	3	4	5	6	7	8
Preparation of the weld metal				Type of metal																															
Weld	Weld metal	Weld metal	Weld metal	Weld metal	Weld metal	Weld metal	Weld metal																												
1	2	3	4	5	6	7	8																												
1	2	3	4	5	6	7	8																												
All unmarked welds to be fillet continuous a=4mm thick, not greater than 0,2 d of the thicker element																																			
The material for cap plates 120 mm thick to be examined for laminations																																			
<p>BIURO INZYNIERSKIE Marek i Janina MUCHA Dłyna, ul. Dłowska 30a, 46-070 Komprachcice tel.077-46 46 757</p>																																			
Drawn by: <i>[Signature]</i> Checked by: <i>[Signature]</i> Date:		Drawing no.: Simple parts 138 - 196 TJARNARVELLIR 11 Steel Office part DRG 133 a																																	