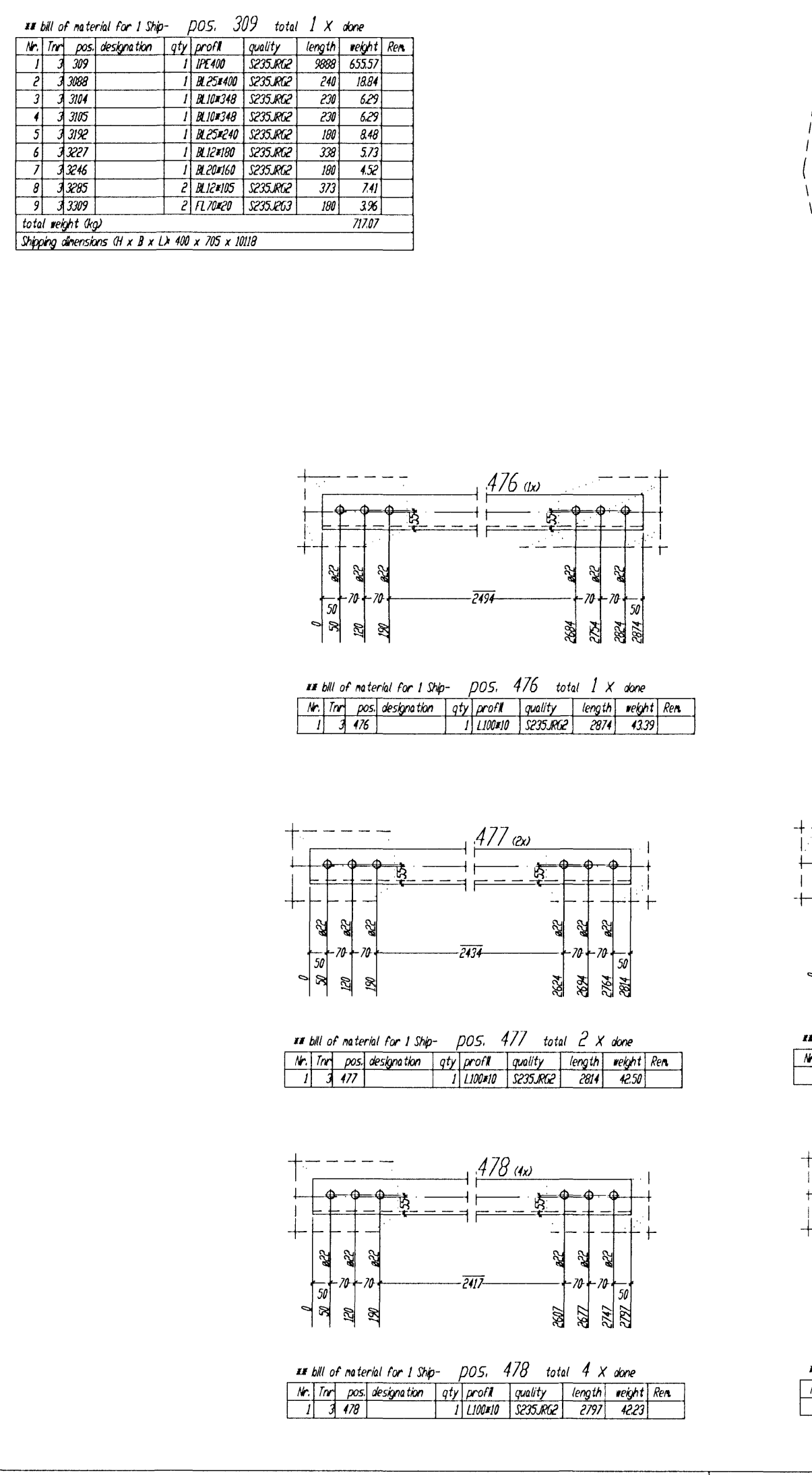
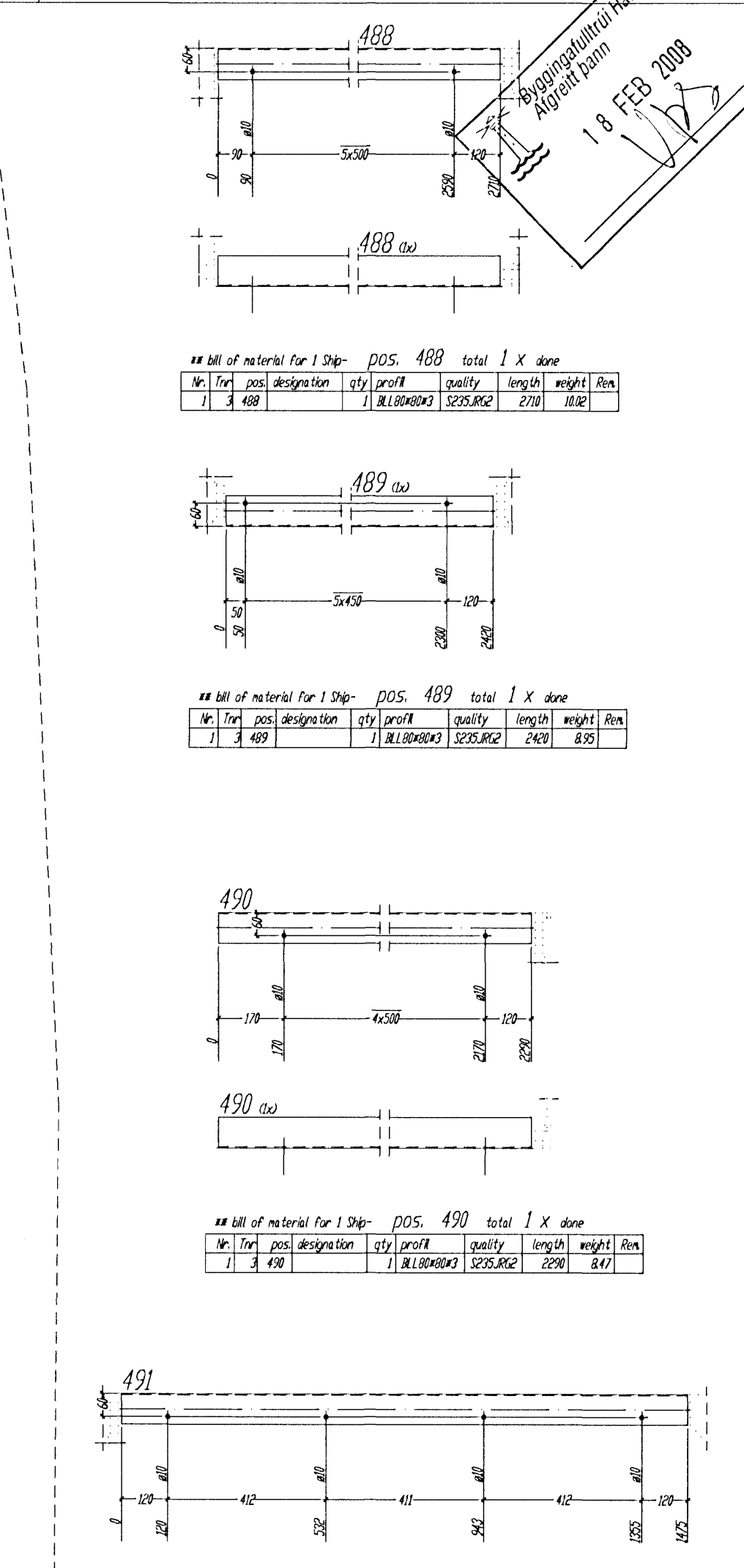
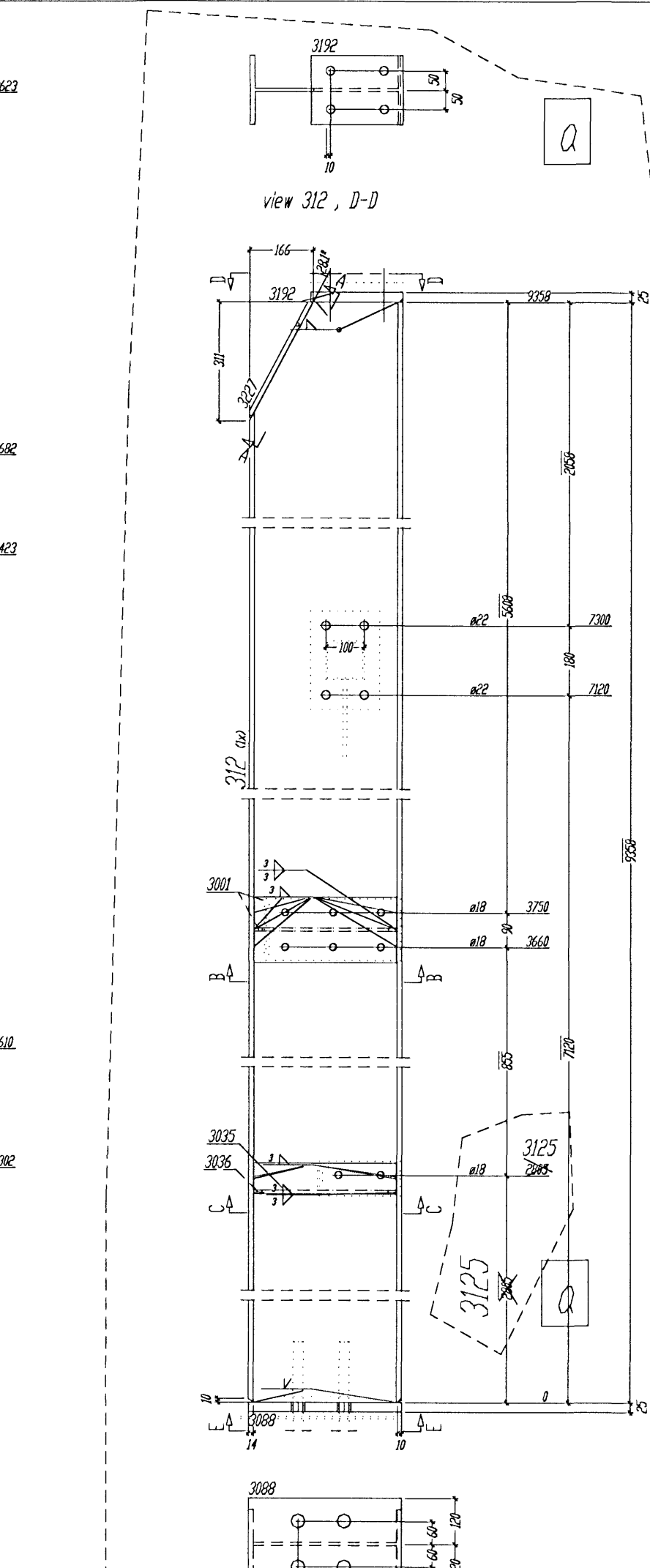
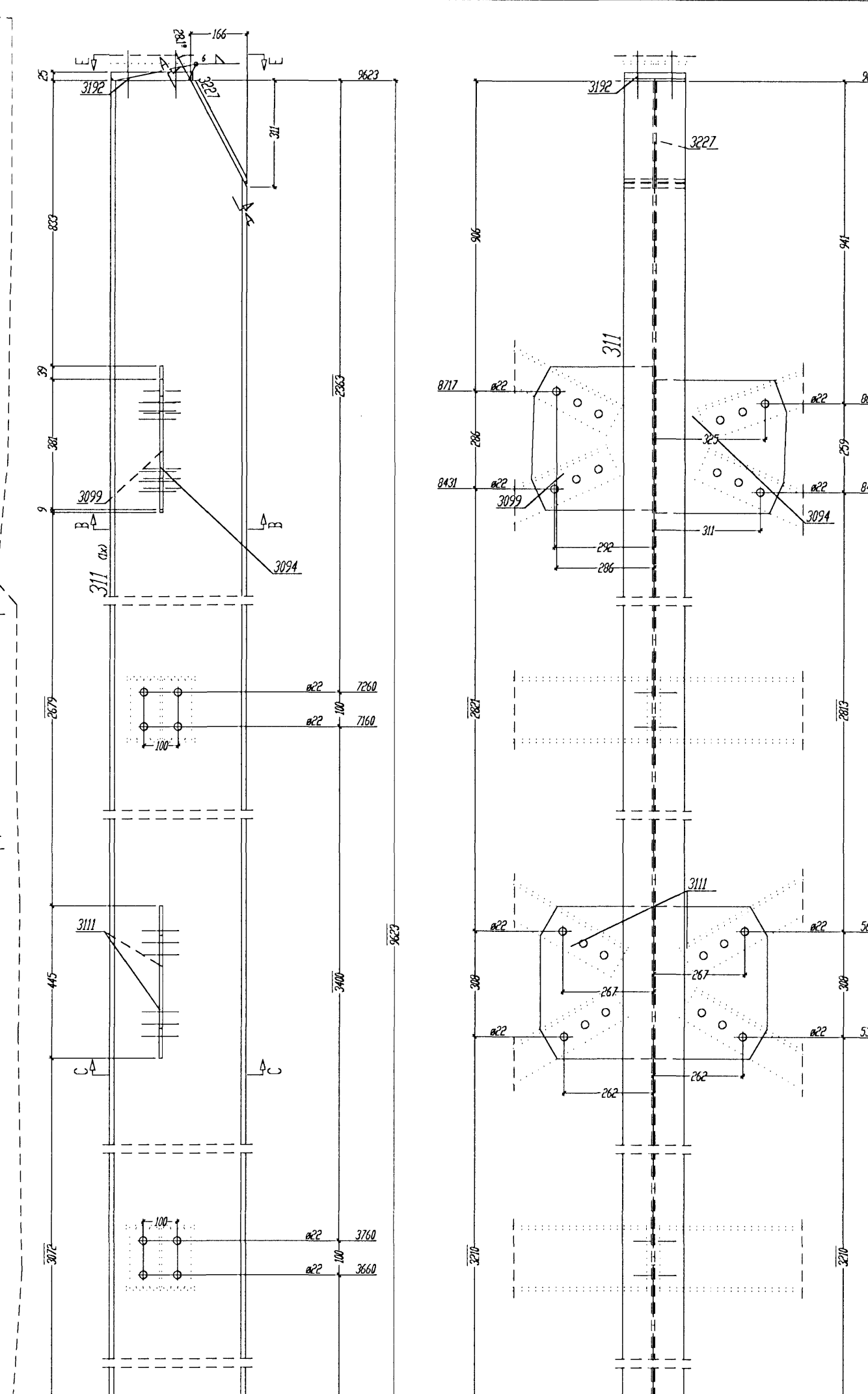
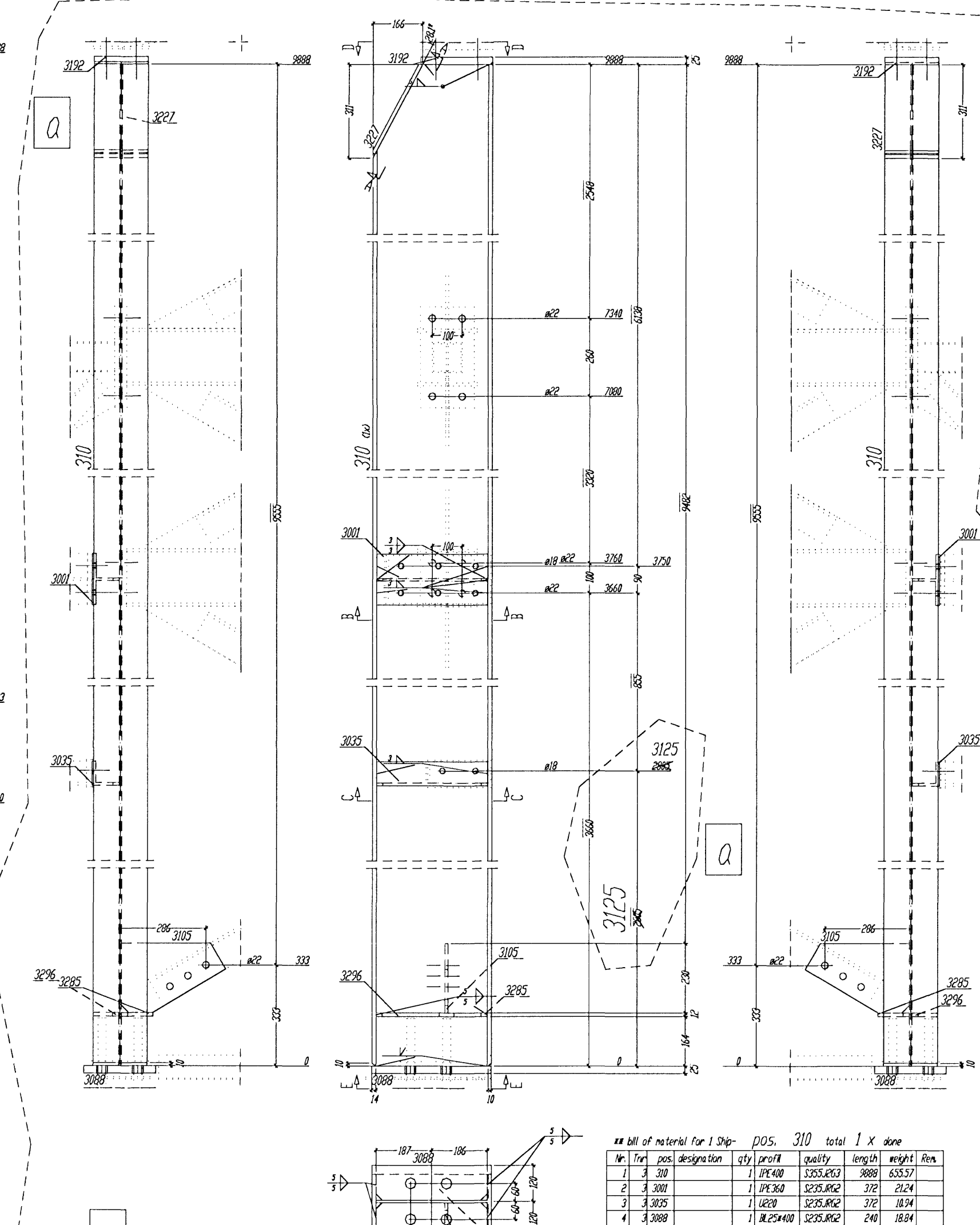
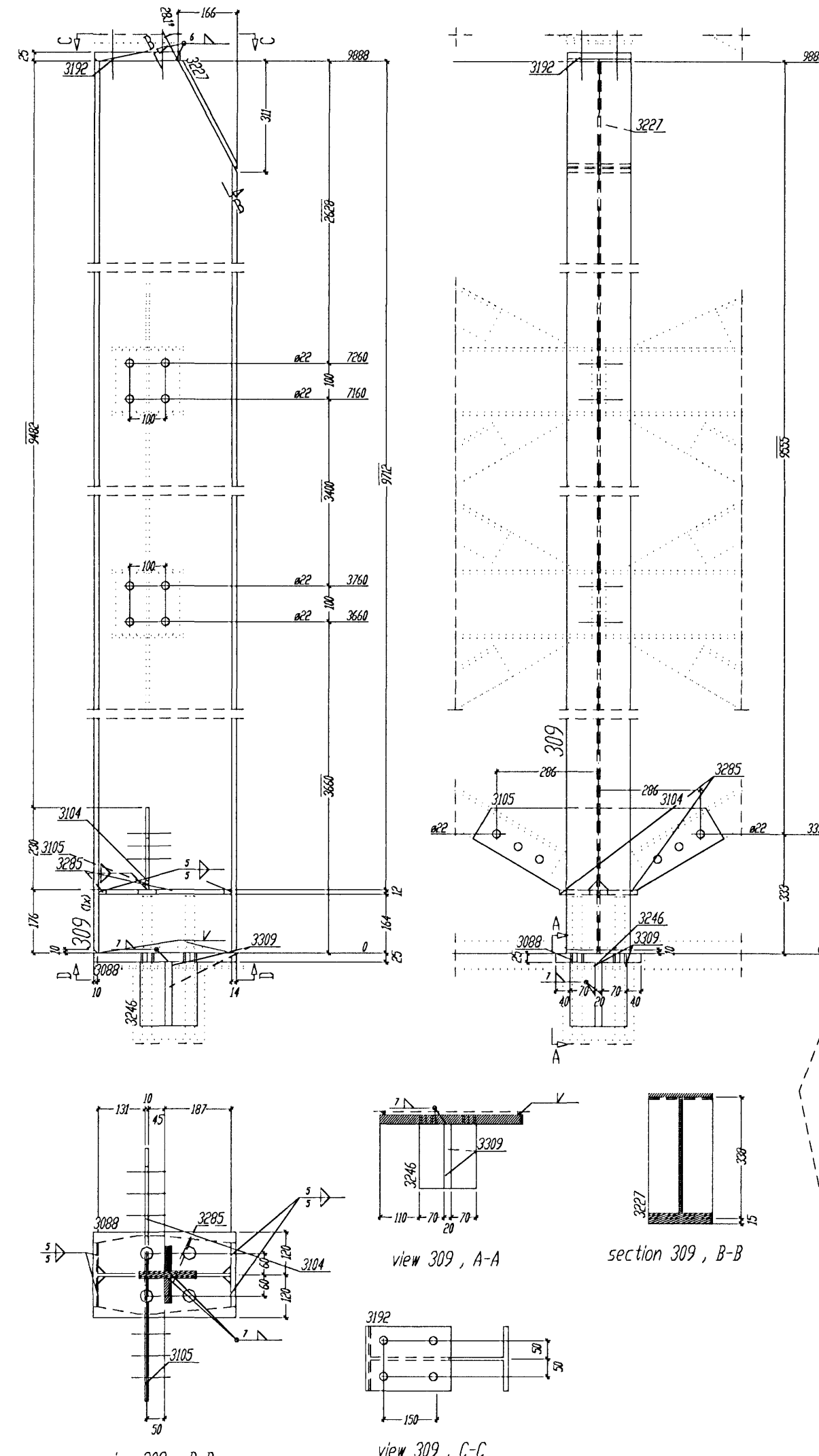


Abgippsamt Mithras Halle  
18 FEB 2008



Fyrir hönd Conis ehf. kt. 600105-1400  
staðfestist að teikning þess hefur verið  
yfirlit. Teikningin er í samræmi við  
viðenska staðla og reglugerðir. 29/10/07  
Jónas B. 130655-4139  
Kennitala

Tolerance for welded constructions  
According to DIN 8203, Pt.1+2/3/4/10/82  
Welding (WPS) according to  
DIN-EN 288 - 2

All unmarked welds to be fillet  
continuous across thick,  
not greater than 0,7 d  
of the thinner element

The material for cap plates 120 mm thick  
to be examined for laminations

Required torquing/prestressing forces and forced  
tension angles according to DIN 10805 Pt. 7, 25/89

Proficiency of PW tests shall be according to  
DIN EN 288 - 2

It is to be kept in mind that the use of the type of thread element  
depends on the type of thread element used.

Proficiency of the test of the thread and surface of bolts and nuts  
shall be according to DIN EN 1090 Pt. 1, 10/10

BIURO INZYNIERSKIE  
Marek i Janina MUCHA  
Dłyna, ul. Opolska 30a, 46-070 Komprachcice tel.077-46 46 757

Pos.309-312, 476-493

TJARNARVELLIR 11  
Steel Storage house

DRG 204 a