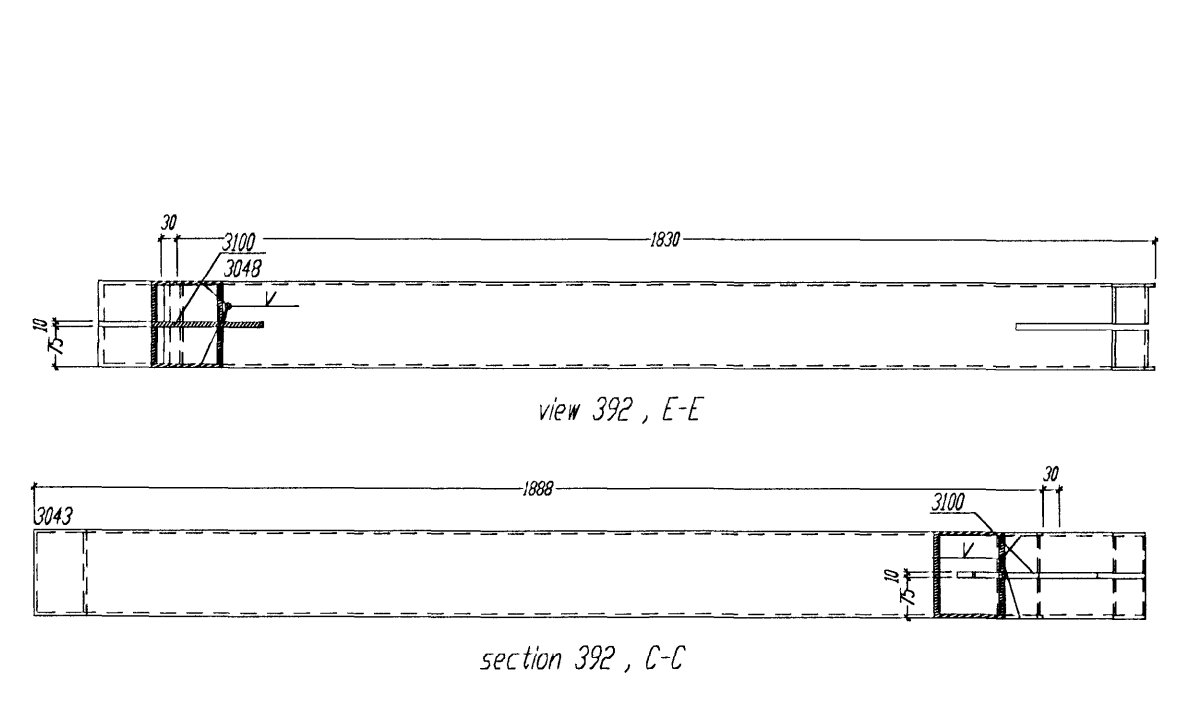
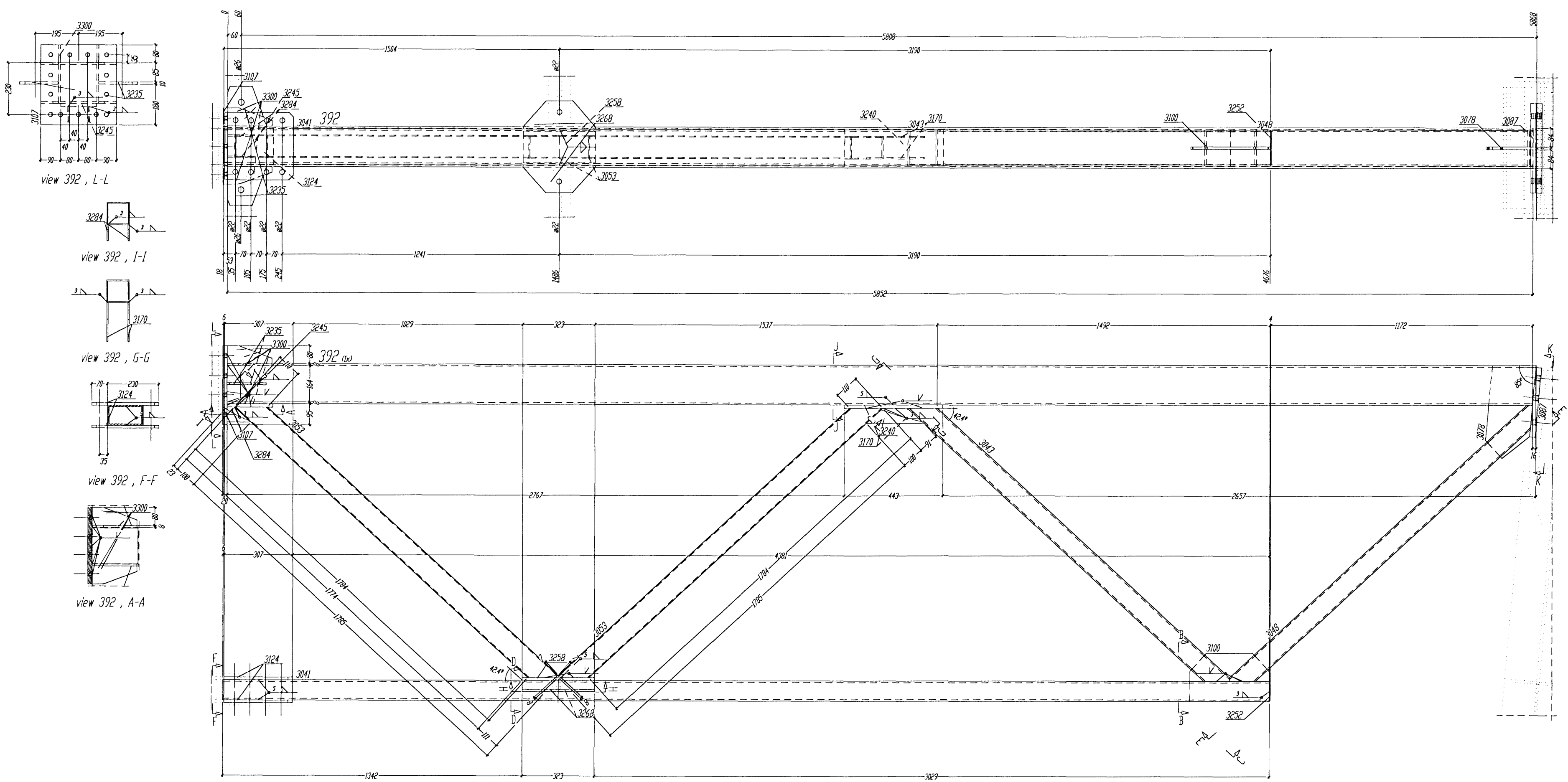


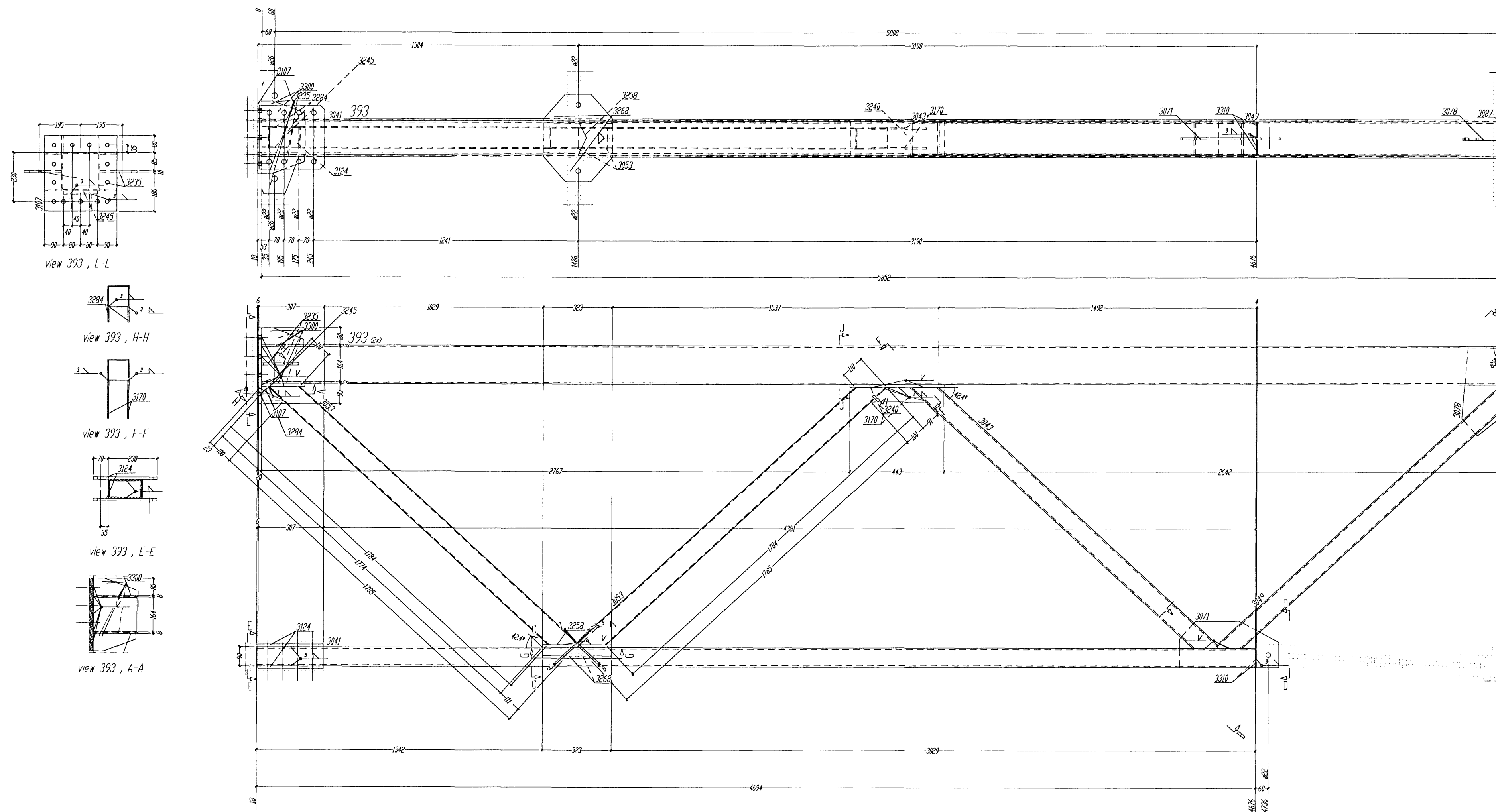
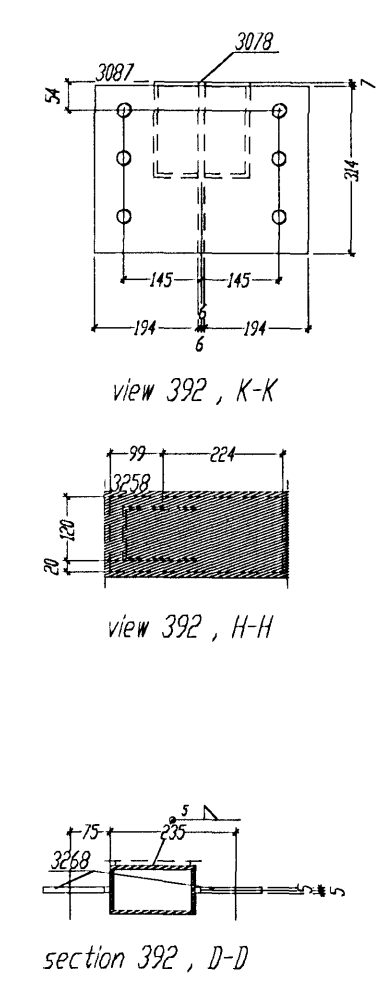
Þvingunskilningur af höndunarkerfi
 Alþingishúsið
 18 FEB 2008



of material for 1 Dip. DOS. 392 total 1 x done

Nr.	Pos.	Designation	Qty	Profile	Quality	Length	Weight	Rev.
1	301	1	1	M08040001	S355A03	2800	24534	
2	304	1	1	M08040001	S355A03	4694	10459	
3	3043	1	1	M08040001	S355A03	1880	3843	
4	3049	1	1	M08040001	S355A03	1880	3725	
5	3053	2	2	M08040001	S355A03	1885	4525	
6	3078	1	1	R124400	S355A03	195	789	
7	3087	1	1	R124400	S355A03	314	2461	
8	3100	1	1	R124400	S355A03	274	630	
9	3107	1	1	R124400	S355A03	255	1837	
10	3104	2	2	R124400	S355A03	307	1725	
11	3110	2	2	R124400	S355A03	67	164	
12	3235	2	2	R124400	S355A03	175	480	
13	3240	1	1	R124400	S355A03	443	874	
14	3245	1	1	R124400	S355A03	355	336	
15	3256	2	2	R124400	S355A03	88	38	
16	3259	1	1	R124400	S355A03	327	425	
17	3260	2	2	R124400	S355A03	327	634	
18	3264	2	2	R124400	S355A03	67	67	
19	3280	6	6	R124400	S355A03	200	632	
20	3281	2	2	R124400	S355A03	80	22	
Total weight (kg)							58642	

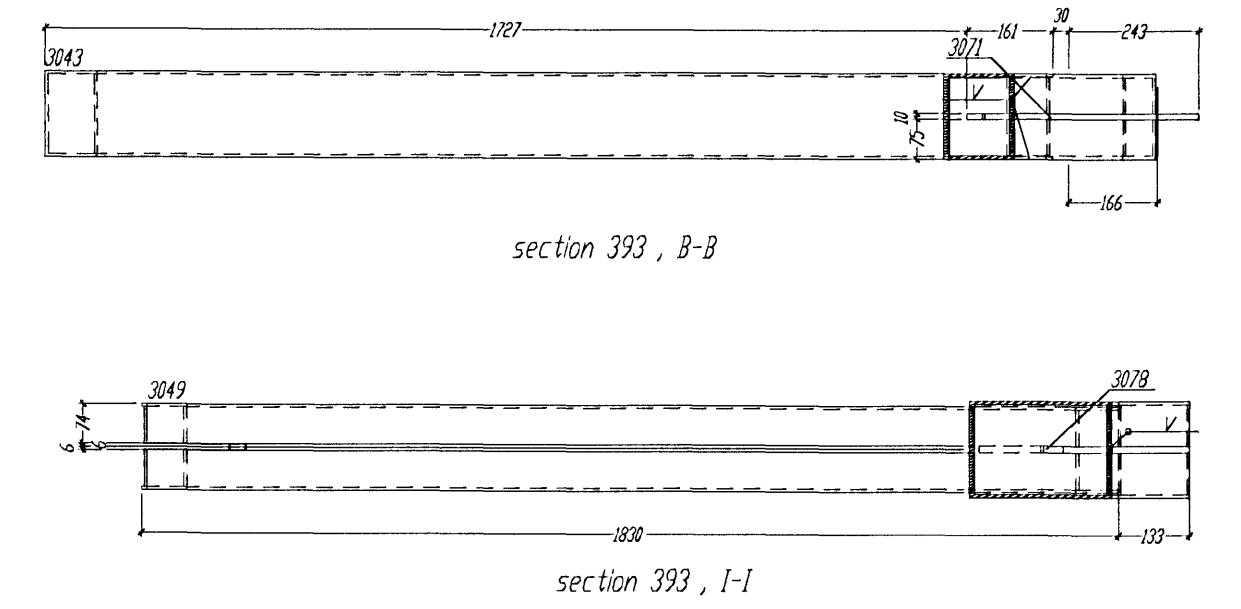
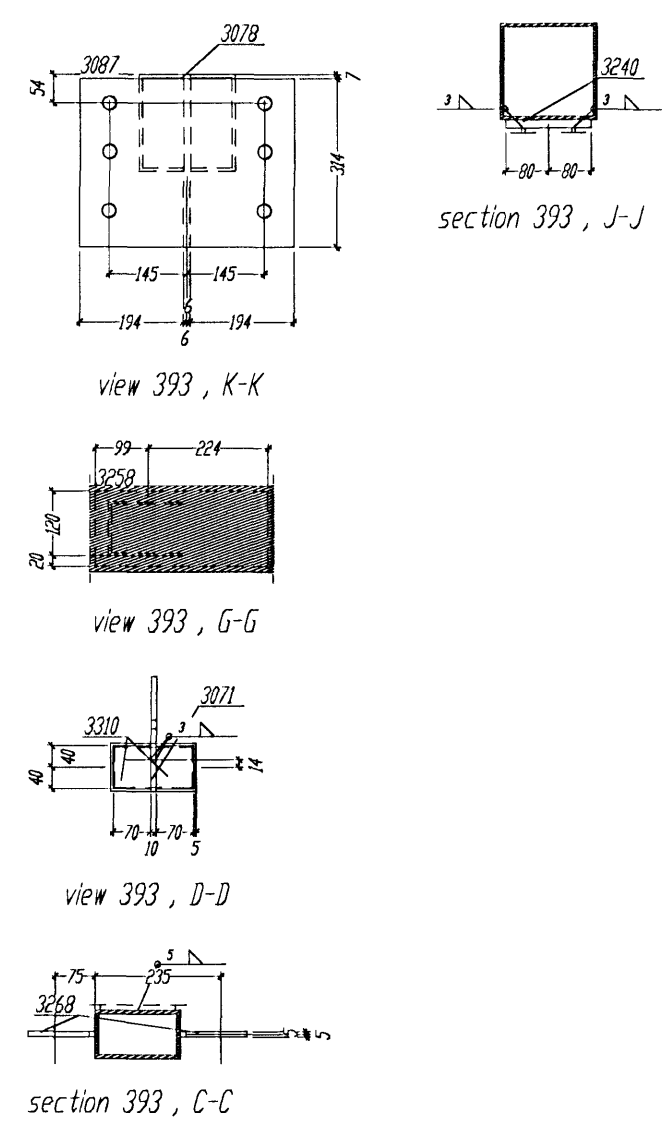
Shipping dimensions 01 x 8 x LA 1592 x 530 x 592



of material for 1 Dip. DOS. 393 total 2 x done

Nr.	Pos.	Designation	Qty	Profile	Quality	Length	Weight	Rev.
1	301	1	1	M08040001	S355A03	2800	1982	
2	304	1	1	M08040001	S355A03	4694	10459	
3	3043	1	1	M08040001	S355A03	1880	3843	
4	3049	1	1	M08040001	S355A03	1880	3725	
5	3053	2	2	M08040001	S355A03	1885	4525	
6	3078	1	1	R124400	S355A03	195	789	
7	3087	1	1	R124400	S355A03	314	2461	
8	3100	1	1	R124400	S355A03	274	630	
9	3107	1	1	R124400	S355A03	255	1837	
10	3104	2	2	R124400	S355A03	307	1725	
11	3110	2	2	R124400	S355A03	67	164	
12	3235	2	2	R124400	S355A03	175	480	
13	3240	1	1	R124400	S355A03	443	874	
14	3245	1	1	R124400	S355A03	355	336	
15	3256	2	2	R124400	S355A03	88	38	
16	3259	1	1	R124400	S355A03	327	425	
17	3260	2	2	R124400	S355A03	327	634	
18	3264	2	2	R124400	S355A03	67	67	
19	3280	6	6	R124400	S355A03	200	632	
20	3281	2	2	R124400	S355A03	80	22	
Total weight (kg)							54923	

Shipping dimensions 01 x 8 x LA 1592 x 530 x 592



Fyrir hönd Conis ehf, kt. 600105-1400
 staðfestist að teikning þessi hefur verið
 yfirfarin. Teikningin er í samræmi við
 íslenska stöðla og reglugerðir. 28/1 07
 130657-01-07
 Nafn Kennitala

Tolerance for welded constructions
 According to DIN 9570, Pt1+3/9/1,10/7
 Welding (V P S) according to
 DIN-EN 888 - 2

All unmarked welds to be fillet
 continuous a-fan thick,
 not greater than 0,7 d
 of the thinner element

The material for cap plates >20 mm thick
 to be examined for laminations

Required torques prestressing forces and forced
 tension angles according to DIN 18800 Pt. 7, 05.83

1	2	3	4	5	6	7	8	9	10	11	12
1	2	3	4	5	6	7	8	9	10	11	12

BIURO INZYNIERSKIE
 Marek i Janina MUCHA
 Usiny, ul. Opolska 30a, 46-070 Komprachcice tel.077-46 46 757

DATE: 200802
 NAME: MUCHA
 SIGNATURE: [Signature]

ISS SCALE: [Blank]

Pos.392-393

T-JARNARVELLIR 11
 Steel- Storage house

DRG 224